

Anti-XRCC2

Polyclonal Antibody

Cat. # 07-1614

Lot # NG1586842

pack size: 100 µL

Store at -20°C

FOR RESEARCH USE ONLY



Certificate of Analysis

page 1 of 2

Applications	Species Cross-Reactivity	Antibody Isotype	Epitope/Region	Host Species	Molecular Weight	Accession #
WB, IH(P), IC	H, M	N/A	a.a. 206-217	Rb	~32 kDa	NM_005431

Background

X-ray repair cross-complementing protein (XRCC2) is a member of the RecA family which is essential for DNA repair and maintenance. XRCC2 also belongs to the Rad51 subfamily of proteins involved in double stranded DNA break repair. XRCC2 is thought to encode a member of the RecA/Rad51 related protein family which maintains chromosome stability and repairs DNA damage. XRCC2 and Rad51 interact to form a multimeric ring in the absence of DNA. XRCC2 is thought to load Rad51 onto gapped DNA.

Presentation

Rabbit polyclonal precipitated antibody in a solution of 50% saturated ammonium sulfate and PBS containing no preservatives

Specificity

This antibody recognizes XRCC2.

Species Cross-reactivity

Tested on human and mouse.

Immunogen

A synthetic peptide corresponding to amino acids 206-217 of XRCC2.

Molecular Weight

~32 kDa

Method of Purification

Affinity purified polyclonal precipitated in ammonium sulfate.

Storage and Handling

Stable for 1 year at -20°C from date of receipt.

Handling Recommendations: Upon first thaw, and prior to removing the cap, centrifuge the vial and gently mix the solution. Aliquot into microcentrifuge tubes and store at -20°C. Avoid repeated freeze/thaw cycles, which may damage IgG and affect product performance.

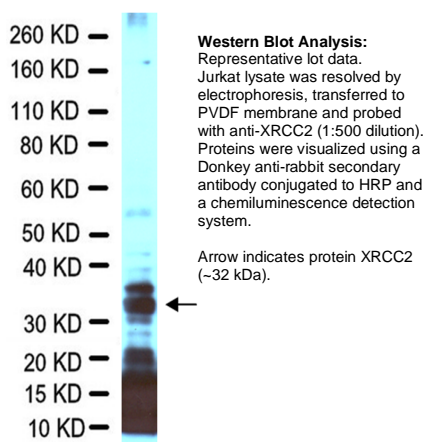
To reconstitute the antibody, centrifuge the antibody at a moderate speed (5,000 rpm) for 5 minutes. Carefully remove the ammonium sulfate/PBS buffer solution and discard; 10µL of residual ammonium sulfate solution will not affect the re-suspension of the antibody. Do not let the protein pellet dry, as severe loss of antibody reactivity can occur. Re-suspend the antibody pellet in 100 µL either standard PBS or TBS (pH 7.3-7.5). DO NOT VORTEX. Mix by gentle stirring with a wide pipet tip or gentle finger-tapping. Let the precipitated antibody rehydrate for 1 hour at 4-25°C prior to use. Small particles of precipitated antibody that fail to re-suspend are normal. Vials are overfilled to compensate for any losses.

Control

Jurkat cell lysate, human lung, NIH/3T3, A431, HeLa cells.

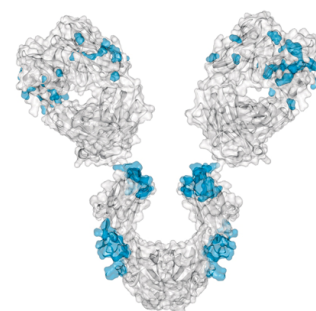
Quality Control Testing

Western Blot Analysis: 1:500 dilution of this antibody detected XRCC2 in 10 µg of a Jurkat cell lysate.



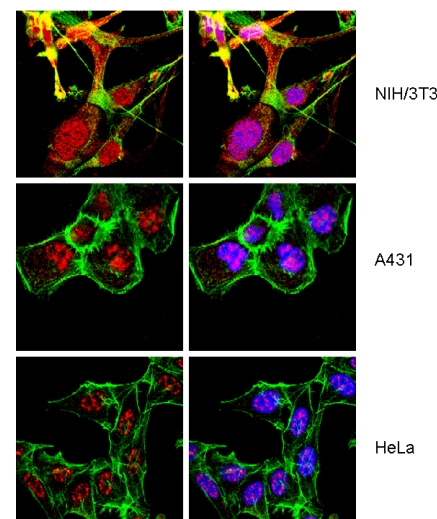
Western Blot Analysis:
Representative lot data. Jurkat lysate was resolved by electrophoresis, transferred to PVDF membrane and probed with anti-XRCC2 (1:500 dilution). Proteins were visualized using a Donkey anti-rabbit secondary antibody conjugated to HRP and a chemiluminescence detection system.

Arrow indicates protein XRCC2 (~32 kDa).



Immunocytochemistry:

Anti-XRCC2 polyclonal was used in immunocytochemistry to positively stain the nucleus on A431, NIH/3T3 and HeLa cells.



Immunocytochemistry:
Representative lot data. Confocal fluorescent IC analysis of NIH/3T3, A431, and HeLa cells. Cell were triple labeled using anti-Fra1 (red, nuclear), Phalloidin (green, actin), and DAPI (nuclei, blue- for right images only)

APPLICATION LEGEND: WB Western Blotting IP Immunoprecipitation IC Immunocytochemistry IF Immunofluorescence IH(P) Immunohistochemistry (Paraffin)

SPECIES LEGEND: H Human M Mouse R Rat Rb Rabbit WR Most Common Vertebrates

Please visit www.millipore.com for additional product information, test data and references.

Submit your published journal article, and earn credit toward future Millipore purchases. Visit www.millipore.com/publicationrewards to learn more!

upstate | CHEMICON | Linco

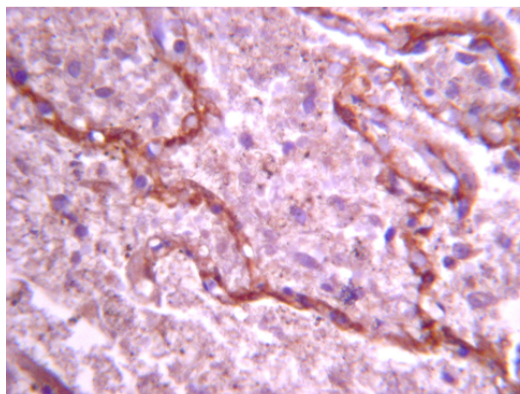
THE EXPERTISE OF UPSTATE®, CHEMICON® AND LINCO® IS NOW A PART OF MILLIPORE

Rev.B/2009-04-08/07-1614CA/MS

Additional Research Applications

Immunohistochemistry (Paraffin): Anti-XRCC2 antibody was used for immunohistochemistry on human lung tissue.

Formalin-fixed and paraffin-embedded Human lung tissue treated with Citrate pH 6.0 (HIER) and stained with anti-XRCC2 (1:100)



Immunohistochemistry:
 Representative lot data.
 Formalin-fixed and paraffin-embedded human lung tissue.

PROTOCOL

Western Blotting

1. Perform SDS-polyacrylamide gel electrophoresis (SDS-PAGE) on cell lysate and transfer the proteins to a PVDF membrane. Wash the PVDF membrane twice with water.
2. Block the blotted PVDF membrane in 5% freshly prepared BSA with 0.05% Tween®-20 for 30 minutes at room temperature with constant agitation.
3. Incubate the PVDF with the recommended dilution of Anti-XRCC2 diluted in 5% BSA/0.05% Tween for 2 hours at room temperature or overnight with agitation at 2-8°C.
4. Wash the PVDF 3 times with TBST.
5. Incubate the PVDF in the secondary reagent of choice (Donkey anti-rabbit HRP conjugated IgG, Catalog # AP182P 1:5000 dilution was used) in milk for 1 hour with agitation at room temperature.
6. Wash the PVDF 3-5 times with TBST.
7. Use Chemiluminescent ECL Detection System, Catalog # 2600 to visualize results. Use as directed.

RELATED PRODUCTS (specific)

cat #	description
AB3916	■ Anti-XRCC1
05-530	■ Anti-Rad51, clone 3C10
07-744	■ Anti-Rad51
AB3756	■ Anti-Rad51
MAB3694	■ Anti-Rad51B, clone 1H3
AB3223	■ Anti-Rad51B
MAB3696	■ Anti-Rad51C, clone 2H11
AB3760	■ Anti-Rad51C/Rad51L2
AP182P	■ Donkey anti-rabbit HRP conjugated IgG

RELATED PRODUCTS (non-specific)

cat #	description
IPVH00010	■ Immobilon-P 26.5 cm x 3.75 m Roll PVDF 0.45 µm
IPFL00010	■ Immobilon-FL 26.5 cm x 3.75 m Roll PVDF 0.45 µm
IPVH07850	■ Immobilon-P 7 x 8.4 cm PVDF 0.45 mm (sheet) 50/pk
ISEQ00010	■ Immobilon-P SQ 26.5 cm x 3.75 m 1 roll PVDF 0.2 µm
ISEQ07850	■ Immobilon-P 7 x 8.4 cm PVDF 0.2 mm (sheet) 50/pk
IPFL07810	■ Immobilon-FL 7 x 8.4 cm PVDF 0.45 mm (sheet) 10/pk
WBKLS0100	■ Immobilon Western Chemilum HRP Substrate 100 mL
17-373	■ Spray & Glow™ ECL WB Detection System 1 ea
2060	■ Re-Blot Western Blot Recycling Kit
2500	■ Re-Blot Plus Western Blot Recycling Kit
B2080-175GM	■ Blot Quick Blocker Membrane Blocking Agent 175G

■ antibodies ■ Multiplex products ■ biotools ■ cell culture ■ enzymes ■ kits ■ proteins/peptides ■ siRNA/cDNA products

Please visit www.millipore.com for additional product information, test data and references

28820 Single Oak Drive • Temecula, CA 92590

Technical Support: T: 1-800-MILLIPORE (1-800-645-5476) • F: 1-800-437-7502

FOR RESEARCH USE ONLY. Not for use in diagnostic or therapeutic applications. Not for human or animal consumption. Purchase of this Product does not include any right to resell or transfer, either as a stand-alone product or as a component of another product. Any use of this Product for purposes other than research is strictly prohibited without prior written authorization from an authorized officer of Millipore Corporation.

Upstate®, Chemicon®, Linco® and all other trademarks are owned by Millipore Corporation. Copyright ©2008-2009 Millipore Corporation. All rights reserved.



We Buy 100% Certified Renewable Energy