

Certificate of Analysis

EGF Stimulated A431 Cell Lysate

Catalog # 12-302

Lot # DAM1612162

Product Description: Cellular protein preparation. Cells were cultured for 20 minutes in the presence of 50 ng/ml EGF (catalog #01-107), lysed in modified RIPA buffer (50mM Tris-HCl, pH 7.4, 1% NP40, 0.25% sodium deoxy-cholate, 150mM NaCl, 1mM EGTA, 1mM PMSF, 1µg/ml aprotinin, 1µg/ml leupeptin, 1µg/ml pepstatin, 1mM Na₃VO₄, 1mM NaF) and **diluted with non-reducing sample buffer** (31mM Tris-HCl, pH 6.8, 5% glycerol, 1% SDS, 0.002% bromophenol blue).

Quantity and Formulation: 100µg in 100µl of RIPA diluted with non-reducing sample buffer. Concentration: 1mg/ml. Frozen solution.

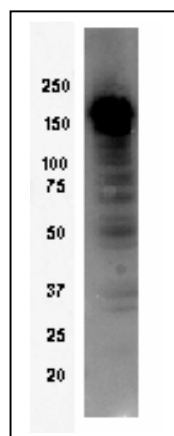
Storage and Stability: Stable for 6 months at -20°C from date of shipment. For maximum recovery of product, centrifuge the original vial after thawing and prior to removing the cap. Aliquot to avoid repeated freezing and thawing.

Use: Add 2.5µl of 2-mercaptoethanol/100µl of lysate and boil for 5 minutes to reduce the preparation. Load 20µg of reduced lysate per lane for immunoblot analysis. This preparation may be used as a positive control for some of Upstate Biotechnology's antibodies.

**FOR RESEARCH USE ONLY
 NOT FOR USE IN HUMANS**

Quality Control Testing

Immunoblot Analysis: 20µg of this lot of EGF Stimulated A431 Cell Lysate was tested by using 0.5-2µg/ml monoclonal anti-phosphotyrosine, clone 4G10® (Catalog # 05-321) to detect the tyrosine phosphorylated proteins.



Western Blot Analysis:

Representative lot data. EGF-stimulated A431 cell lysate was resolved by electrophoresis, transferred to PVDF and probed with anti-phosphotyrosine (0.5 µg/mL). Proteins were visualized using a goat anti-mouse secondary antibody conjugated to HRP and a chemiluminescence detection system

Unless otherwise stated in our catalog or other company documentation accompanying the product(s), our products are intended for research use only and are not to be used for any other purpose, which includes but is not limited to, unauthorized commercial uses, in vitro diagnostic uses, ex vivo or in vivo therapeutic uses or any type of consumption or application to humans or animals.

©2007: Millipore Corporation. All rights reserved. No part of these works may be reproduced in any form without permission in writing.

28820 Single Oak Drive • Temecula, CA 92590
 Technical Support: T: 800 437-7500 • F: 800 437-7502
www.millipore.com