



Fischer Building, Gemini Crescent Dundee,
DD2 1SW, UK
T: +44(0) 1382 561600
F: +44(0) 1382 561601
Technical Support: (US/Canada)
T: 800 437-7500 • F: 800 437-7502
www.millipore.com

Certificate of Analysis

Flt1, active
(Recombinant enzyme expressed in Sf21 insect cells)
Catalogue # 14-562
Lot # D7MN032U

Product Description: N-terminal 6His-tagged recombinant human Flt1 residues 783–end, expressed by baculovirus in Sf21 insect cells. Purified using Ni²⁺/NTA agarose. Purity 43% by SDS-PAGE and Coomassie blue. MW = 66kDa.

Specific Activity (lot# D7MN032U): 95U/mg, where one unit of Flt1 activity is defined as 1nmol phosphate incorporated into 250µM IGFtide (KKKSPGEYVNIEFG) per minute at 30°C with a final ATP concentration of 100µM.

Formulation: 250µg of enzyme in 230.6µl of 50mM Tris/HCl pH7.5, 150mM NaCl, 0.1mM EGTA, 0.03% Brij-35, 270mM sucrose, 1mM benzamidine, 0.2mM PMSF, 0.1% 2-mercaptoethanol. Frozen solution.

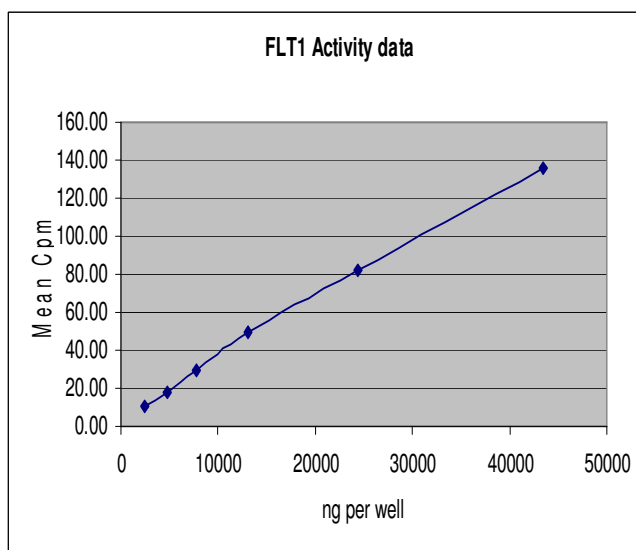
Storage and Stability: Store at -70°C from date of shipment. For maximum recovery of product, centrifuge original vial prior to removing the cap.

Handling Recommendations: Rapidly thaw the vial under cold water and immediately place on ice. Aliquot unused material into pre-chilled microcentrifuge tubes and immediately snap-freeze the vials in liquid nitrogen prior to re-storage at -70°C.

**FOR IN VITRO RESEARCH USE ONLY
NOT FOR USE IN HUMANS OR ANIMALS**

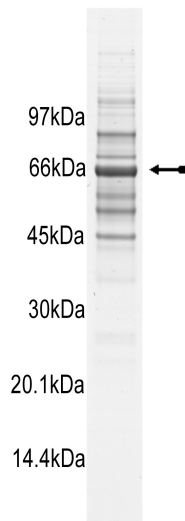
Quality Control Testing

Kinase Assay: 10.75–135.5ng of this lot of enzyme phosphorylated 250µM IGFtide in the assay described on page two. Assay background was subtracted from the actual counts to yield the results shown below.



MS Tryptic Fingerprint: Confirmed identity as Flt1 with 44% amino acid coverage of the translated sequence listed on page three.

SDS-PAGE and Coomassie Stain: Purity was assessed by SDS-PAGE and Coomassie blue staining using 3µg of Flt1, active.



Kinase Assay Protocol

Stock Solutions:

1. **5 x Reaction Buffer:** 40mM MOPS/NaOH pH7.0, 1mM EDTA.
2. **IGFtide (KKKSPGEYVNIEFG):** Use at a final assay concentration of 250 μ M. Prepare a 2.5mM stock and add 2.5 μ l of stock per assay point.
3. **Flt1, active:** Dilute with 20mM MOPS/NaOH pH7.0, 1mM EDTA, 5% glycerol, 0.01% Brij-35, 0.1% 2-mercaptoethanol, 1mg/ml BSA. Use 10.75–135.5ng per assay point.
4. **[γ -³³P]ATP:** 2.5 x magnesium acetate/[γ -³³P]ATP cocktail: 25mM MgAc and 0.25mM ATP to which is added [γ -³³P]ATP (specific activity approximately 500 - 800cpm/pmol as required.)

Assay Procedure (96 well plate format):

1. Add 5 μ l of 5 x reaction buffer to wells.
2. Add 2.5 μ l of **IGFtide**.
3. Add **2.5 μ l (10.75–135.5ng) Flt1, active**.
4. Add 5 μ l of dH₂O.
5. Add 10 μ l of diluted [γ -³³P]ATP mixture.
6. Incubate for 10 minutes at 30 °C.
7. Stop the reaction by adding 5 μ l of 3% phosphoric acid.
8. Transfer a 10 μ l aliquot onto the appropriate area of a **P30 Filtermat**.
9. Wash the filtermat three times for 5 minutes with 75mM phosphoric acid.
10. Wash the filtermat once for 2 minutes with methanol.
11. Transfer the filtermat to a sealable plastic bag and add 4ml of scintillation cocktail.
12. Read in a scintillation counter. Compare cpm of enzyme samples with cpm of control samples that contain all assay components plus 1 μ l of 30% phosphoric acid.

Flt1Sequence Information

Protein human Flt1
Tags N-terminal 6His
Native sequence M29 of the recombinant protein is equivalent to M783 of human Flt1
Accession number GenBank AF063657

Recombinant Flt1 amino acid sequence:

```
1 MSYYHHHHHH DYDIPTTENL YFQGAMGSMK RSSSEIKTDY LSIIMDPDEV PLDEQCERLP
61 YDASKWEFAR ERLKLGKSLG RGAFGKVVQA SAFGIKKSPT CRTVAVKMLK EGATASEYKA
121 LMTELKILTH IGHHLNVVNL LGACTKQGGP LMVIVEYCKY GNLSNYLKSK RDLFFLNKDA
181 ALHMEPKKEK MEPGLEQGGK PRLDSVTSSE SFASSGFQED KSLSDVEEEE DSDGFYKEPI
241 TMEDLISYSF QVARGMEFLS SRKCIHRDLA ARNILLSENN VVKICDFGLA RDIYKNPDYV
301 RKGDTLPLK WMAPESIFDK IYSTKSDVWS YGVLLWEIFS LGGSPYPGVQ MDEDFC SRLR
361 EGMRRRAPEY STPEIQIML DCWHRDPKER PRFAELVEKL GDLLQANVQQ DGKDYIPINA
421 ILTGNSGFTY STPAFSEDFE KESISAPKFN SGSSDDVRYV NAFKFMSLER IKTFEELLPN
481 ATSMFDDYQG DSSTLLASPM LKRFTWTDK PKASLKIDLR VTSKSKESGL SDVSRPSFCH
541 SSCGHVSEGK RRFTYDHAEL ERKIACCSPP PDYNSVVLYS TPPI
```

Recombinant Flt1 nucleotide sequence:

```
1 atgtcgtact accatcacca tcaccatcac gattacgata tcccaacgac cgaaaacctg
61 tattttcagg gcgccatggg atccatgaaa aggtcttctt ctgaaataaa gactgactac
121 ctatcaatta taatggaccc agatgaagtt cctttggatg agcagtgtga gccggctccct
181 tatgatgcca gcaagtggga gtttgcctgg gagagactta aactgggcaa atcacttgga
241 agagggggctt ttggaaaagt ggttcaagca tcagcatttg gcattaagaa atcacctacg
301 tgccggactg tggctgtgaa aatgctgaaa gagggggcca cggccagcga gtacaaagct
361 ctgatgactg agctaaaaat cttgaccac attggccacc atctgaacgt ggttaacctg
421 ctgggagcct gcaccaagca aggagggcct ctgatggtga ttggtgaata ctgcaaatat
481 ggaaatctct ccaactacct caagagcaaa cgtgacttat tttttctcaa caaggatgca
541 gcactacaca tggagcctaa gaaagaaaa atggagccag gcctggaaca aggcaagaaa
601 ccaagactag atagcgtcac cagcagcga agctttgcga gctccggctt tcaggaagat
661 aaaagtttga gtgatgttga ggaagaggag gattctgacg gtttctaaa ggagcccatc
721 actatggaag atctgatttc ttacagtttt caagtggcca gaggcattga gttcctgtct
781 tccagaaagt gcattcatcg ggacctggca gcgagaaaca ttcttttatc tgagaacaac
841 gtggtgaaga tttgtgattt tggccttgcc cgggatattt ataagaacct cgattatgtg
901 agaaaaggag atactcgact tcctctgaaa tggatggctc ccgaatctat ctttgacaaa
961 atctacagca ccaagagcga cgtgtggtct tacggagtat tgctgtggga aatcttctcc
1021 ttaggtgggt ctccataccc aggagtacaa atggatgagg acttttgcag tcgcctgagg
1081 gaaggcatga ggatgagagc tcctgagtac tctactcctg aaatctatca gatcatgctg
1141 gactgctggc acagagaccc aaaagaaagg ccaagatttg cagaacttgt ggaaaaacta
1201 ggtgatttgc ttcaagcaaa tgtacaacag gatggtaaag actacatccc aatcaatgcc
1261 aactgacag gaaatagtgg gtttacatac tcaactcctg ccttctctga ggacttcttc
1321 aaggaaagta tttcagctcc gaagttaaat tcaggaagct ctgatgatgt cagatatgta
1381 aatgctttca agttcatgag cctggaaaaga atcaaacct ttgaagaact tttaccgaat
1441 gccacctcca tgtttgatga ctaccagggc gacagcagca ctctgttggc ctctcccatg
1501 ctgaagcgct tcacctggac tgacagcaaa cccaaggcct cgctcaagat tgacttgaga
```

1561 gtaaccagta aaagtaagga gtcggggctg tctgatgtca gcaggcccag tttctgccat
1621 tccagctgtg ggcacgtcag cgaaggcaag cgcaggttca cctacgacca cgctgagctg
1681 gaaaggaaaa tcgctgtctg ctccccgcc ccagactaca actcgggtggc cctgtactcc
1741 accccacca tctag

Reviewed and approved by site quality representative (scanned copy of signature)

Unless otherwise stated in our catalogue or other company documentation accompanying the product(s), our products are intended for research use only and are not to be used for any other purpose, which includes but is not limited to, unauthorized commercial uses, in vitro diagnostic uses, ex vivo or in vivo therapeutic uses or any type of consumption or application to humans or animals.

©2007: Millipore Corporation. All rights reserved. No part of these works may be reproduced in any form without permission in writing.