

Anti-ShSCP-5, clone 8H9.3

Monoclonal Antibody

Cat. # MAB4408

Lot # LV1478902

FOR RESEARCH USE ONLY
NOT FOR USE IN HUMANS

pack size: 100 µg

Store at 2-8°C
DO NOT FREEZE



Certificate of Analysis

page 1 of 2

Applications	Species Cross-Reactivity	Antibody Isotype	Epitope/Region	Host Species	Molecular Weight	Accession #
IC, WB	H	IgG1κ	N/A	M	50 kDa	N/A

Background

Developed in collaboration with Axordia Ltd./University of Sheffield, Anti-ShSCP-5 is a novel stem cell antibody that recognizes a potentially unique 50 kDa cell surface protein, which has been found to be specifically expressed on undifferentiated human embryonic stem cells and embryonal carcinomas.

Presentation

Purified mouse monoclonal IgG_{1κ} in PBS with 0.05% sodium azide.

Concentration

1 mg/mL

Specificity

This antibody has been shown through Fluorometric Microvolume Assay Technology (FMAT) and immunocytochemistry studies to be positive against Shef-1, Shef-4, Shef-5, Shef-6, and MEL-1 human embryonic stem cell lines, as well as embryonal carcinoma cells. Reactivity with other hES line has not yet been determined.

Species Cross-reactivity

Reacts with human. Reactivity to other species has not been determined.

Immunogen

Whole cells from Shef-5 hES cell line (UK Stem Cell Bank)

Molecular Weight

50 kDa

Method of Purification

Protein G purified

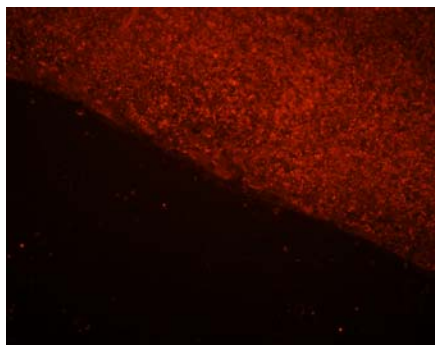
Storage and Handling

Maintain refrigerated at 2-8°C in undiluted aliquots for up to 1 year from date of receipt.

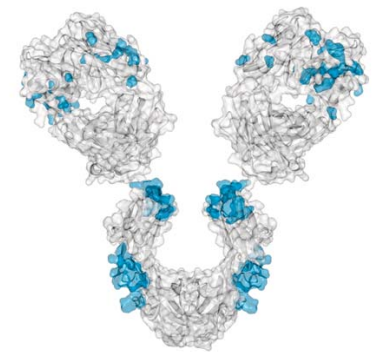
Research Applications

(Based upon representative data from a previous lot).

Immunocytochemistry:



MEL-1 human ES cells labeled with the ShSCP-5 antibody, Cat. No. MAB4408 (lower, red) and DAPI (upper, blue). Only pluripotent human ES cells are labeled by anti-ShSCP-5; note that the antibody does not recognize the scattered cells making up the human fibroblast feeder layer visible to the left of the human ES cell colony. Labeling was done via indirect fluorescence using a rhodamine-conjugated goat anti-mouse IgG secondary antibody (Catalog No. AP124R)



Additional Research Applications

Western Blot:

Western blot was successfully performed using this antibody to detect a 50 kDa protein.

APPLICATION LEGEND: WB Western Blotting IP Immunoprecipitation IC Immunocytochemistry IF Immunofluorescence
IH Immunohistochemistry (Tissue) FC Flow Cytometry (FACS)

SPECIES LEGEND: H Human M Mouse R Rat Rb Rabbit WR Most Common Vertebrates

Please visit www.millipore.com for additional product information, test data and references.

Submit your published journal article, and earn credit toward future Millipore purchases. Visit www.millipore.com/publication_rewards to learn more!

upstate | CHEMICON | Linco

THE EXPERTISE OF UPSTATE®, CHEMICON® AND LINCO®
IS NOW A PART OF MILLIPORE

RELATED PRODUCTS (specific)

cat #	description
MAB4407	■ Anti-HESCA-1, clone 051007-4A5
MAB4406	■ Anti-HESCA-2, clone 060818-7A6
MAB4401	■ Anti-Oct-4, clone 10H11.2
MAB4303	■ Anti-Stage-Specific Embryonic Antigen-3, clone MC-631
MAB4304	■ Anti-Stage-Specific Embryonic Antigen-4, clone MC-813-70
MAB4343	■ Anti-Sox-2, clone 6F1.2
AB4304	■ Anti-Pramel-4
AB4305	■ Anti-Pramel-5
SCR001	■ ES Cell Characterization Kit
SCR002	■ ES Cell Marker Sample Kit

RELATED PRODUCTS (non-specific)

cat #	description
IPVH00010	■ Immobilon-P 26.5 cm x 3.75 m Roll PVDF 0.45 µm
IPFL00010	■ Immobilon-FL 26.5 cm x 3.75 m Roll PVDF 0.45 µm
IPVH07850	■ Immobilon-P 7 x 8.4 cm PVDF 0.45 mm (sheet) 50/pk
ISEQ00010	■ Immobilon-P SQ 26.5 cm x 3.75 m 1 roll PVDF 0.2 µm
ISEQ07850	■ Immobilon-P 7 x 8.4 cm PVDF 0.2 mm (sheet) 50/pk
IPFL07810	■ Immobilon-FL 7 x 8.4 cm PVDF 0.45 mm (sheet) 10/pk
WBKLS0100	■ Immobilon Western Chemilum HRP Substrate 100 mL
17-373	■ Spray & Glow™ ECL WB Detection System 1 ea
2060	■ Re-Blot Western Blot Recycling Kit
2500	■ Re-Blot Plus Western Blot Recycling Kit
B2080-175GM	■ Blot Quick Blocker Membrane Blocking Agent 175G

■ antibodies ■ Multiplex products ■ biotools ■ cell culture ■ enzymes ■ kits ■ proteins/peptides ■ siRNA/cDNA products

Please visit www.millipore.com for additional product information, test data and references

FOR RESEARCH USE ONLY. Not for use in diagnostic or therapeutic applications. Purchase of this Product does not include any right to resell or transfer, either as a stand-alone product or as a component of another product. Any use of this Product for purposes other than research is strictly prohibited without prior written authorization from an authorized officer of Millipore Corporation.

Upstate®, Chemicon® and all other trademarks are owned by Millipore Corporation. Copyright ©2007 Millipore Corporation. All rights reserved.