

GCTM-5 Antibody, clone GCTM-5

Monoclonal Antibody

Cat. # MAB4365

Lot # LV1478901

FOR RESEARCH USE ONLY
NOT FOR USE IN HUMANS

pack size: 100 µg

Store at 2-8°C
DO NOT FREEZE



Certificate of Analysis

page 1 of 2

Applications	Species Cross-Reactivity	Antibody Isotype	Epitope/Region	Host Species	Molecular Weight	Accession #
IC, IH, WB	H	IgG ₁	N/A	M	50 kDa	N/A

Background

The GCTM-5 monoclonal antibody reacts with a minority sub-population of cells in spontaneously differentiating cultures of pluripotent human embryonic stem cells and embryonal carcinoma. The epitope recognized by GCTM-5 is found on a 50-kDa protein present on the surface of these cells. Previous studies suggest that GCTM-5 may also prove to be a useful tool for defining cell lineage relationships between putative progenitor populations in embryonic liver and biliary epithelium during tissue repair.

Presentation

100 µg of protein G purified mouse monoclonal IgG₁ in PBS with 0.05% sodium azide.

Concentration

1 mg/ml

Specificity

This antibody reacts with GCTM-5 antigen that is expressed upon the cell surface of human embryonal carcinoma, differentiating cultures of human embryonic stem cells, and biliary epithelial cells.

Species Cross-reactivity

Reacts with human. Reactivity to other species has not yet been determined.

Immunogen

Membrane prepared from testicular seminoma

Molecular Weight

50 kDa

Method of Purification

Protein G-Sepharose Chromatography

Storage and Handling

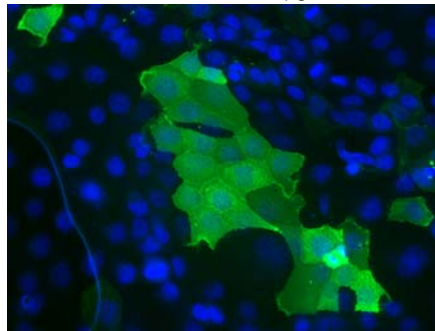
Maintain refrigerated at 2-8°C in undiluted aliquots for up to 12 months.

Research Applications

(Based upon representative data from a previous lot).

Immunocytochemistry:

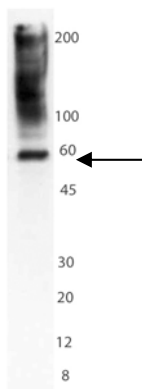
Recommended dilution: 5-20 µg/ml



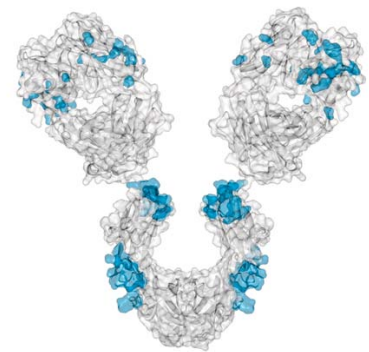
CFPAC1 cells fixed and labeled with 5 µg/ml of GCTM-5 antibody (green); cells are also labeled with DAPI (blue) to visualize all nuclei. A subset of the cells are labeled with GCTM-5, a normal pattern of staining for this antibody. The GCTM-5 antibody labeling was visualized with an Alexa 488-conjugated goat anti-mouse secondary antibody.

Western Blot Analysis:

Recommended dilutions: 0.5-2.5 µg/ml



Western Blot Analysis: CFPAC1 total cell lysates were resolved by electrophoresis, transferred to PVDF and probed with the GCTM-5 antibody (2.5 µg/ml). Arrow indicates GCTM-5 antigen (~50 kDa). Note: the multiple higher weight bands are a characteristic pattern seen in this extract.



References

1. Stamp L., Pera M, et al., (2005). Stem Cells. 23(1):103-112.
2. Tosh D, et al., (2005). Hepatology. 42(1):S75-S84.
3. Costa M, et al., (2005). Nat Methods. Apr 2, 2(4):259-260.
4. Laslett A, et al., (2007). BMC Dev Biol. Mar 2, 7(1):12.
5. Andrews P, et al., (2007). Nat Biotechnol. Jun 17, 25(7):803-816.

Additional Research Applications

Immunohistochemistry¹

A previous lot of this antibody has been successfully used in immunohistochemistry.

APPLICATION LEGEND: WB Western Blotting IP Immunoprecipitation IC Immunocytochemistry IF Immunofluorescence
IH Immunohistochemistry (Tissue) FC Flow Cytometry (FACS)

SPECIES LEGEND: H Human M Mouse R Rat Rb Rabbit WR Most Common Vertebrates

Please visit www.millipore.com for additional product information, test data and references.

Submit your published journal article, and earn credit toward future Millipore purchases. Visit www.millipore.com/publication_rewards to learn more!

upstate | CHEMICON | Linco

THE EXPERTISE OF UPSTATE®, CHEMICON® AND LINCO®
IS NOW A PART OF MILLIPORE

GCTM-5 Antibody, clone GCTM-5Cat # MAB4365
Lot # LV1478901**RELATED PRODUCTS (specific)**

cat #	description
MAB4407	■ Anti-HESCA-1, clone 051007-4A5
MAB4406	■ Anti-HESCA-2, clone 060818-7A6
MAB4408	■ Anti-ShSCP-5, clone 8H9.3
MAB4354	■ Anti-TRA-2-54, Liver/Bone/Kidney Alkaline Phosphatase, clone TRA-2-54/2J
MAB4349	■ Anti-TRA-2-49, Liver/Bone/Kidney Alkaline Phosphatase, clone TRA-2-49
AB3243	■ Anti-PDX-1
SCR045	■ Pancreatic Islet Cell Characterization Kit
SCR046	■ Pancreatic Cell Development Pathway Kit

RELATED PRODUCTS (non-specific)

cat #	description
IPVH00010	■ Immobilon-P 26.5 cm x 3.75 m Roll PVDF 0.45 µm
IPFL00010	■ Immobilon-FL 26.5 cm x 3.75 m Roll PVDF 0.45 µm
IPVH07850	■ Immobilon-P 7 x 8.4 cm PVDF 0.45 mm (sheet) 50/pk
ISEQ00010	■ Immobilon-P SQ 26.5 cm x 3.75 m 1 roll PVDF 0.2 µm
ISEQ07850	■ Immobilon-P 7 x 8.4 cm PVDF 0.2 mm (sheet) 50/pk
IPFL07810	■ Immobilon-FL 7 x 8.4 cm PVDF 0.45 mm (sheet) 10/pk
WBKLS0100	■ Immobilon Western Chemilum HRP Substrate 100 mL
17-373	■ Spray & Glow™ ECL WB Detection System 1 ea
2060	■ Re-Blot Western Blot Recycling Kit
2500	■ Re-Blot Plus Western Blot Recycling Kit
B2080-175GM	■ Blot Quick Blocker Membrane Blocking Agent 175G

■ antibodies ■ Multiplex products ■ biotools ■ cell culture ■ enzymes ■ kits ■ proteins/peptides ■ siRNA/cDNA products

Please visit www.millipore.com for additional product information, test data and references

FOR RESEARCH USE ONLY. Not for use in diagnostic or therapeutic applications. Purchase of this Product does not include any right to resell or transfer, either as a stand-alone product or as a component of another product. Any use of this Product for purposes other than research is strictly prohibited without prior written authorization from an authorized officer of Millipore Corporation.

Upstate®, Chemicon® and all other trademarks are owned by Millipore Corporation. Copyright ©2007 Millipore Corporation. All rights reserved.