



cell signaling solutions

## Certificate of Analysis

10 Old Barn Road • Lake Placid, NY 12946  
Technical Support: T: 800 548-7853 • F: 518 523-4513  
email: techserv@upstate.com  
Sales Department: T: 800 233-3991 • F: 781 890-7738  
Licensing Dept.: 800 310-4659  
www.upstate.com

### Anti-phospho-ATF2 (Ser90)

(sheep polyclonal IgG)

Catalog # 36-015

Lot # 26959

**Immunogen:** KLH-conjugated, synthetic peptide corresponding to amino acids surrounding phosphorylated Ser90 of human ATF2. The immunizing sequence is identical in human, mouse and rat.

**Specificity:** Recognizes ATF2 (Catalog # 12-367) phosphorylated by JNK1 $\alpha$ 1/SAPK1c, active (Catalog # 14-327).

**Species Cross-reactivity:** Human. Predicted to cross-react with mouse and rat, based on sequence homology.

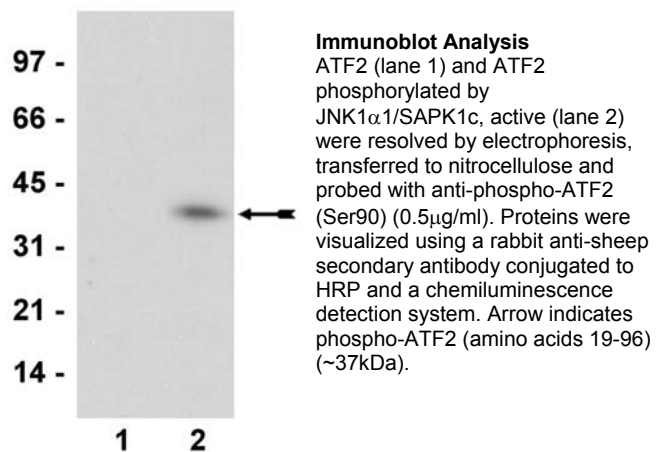
**Formulation:** 200 $\mu$ g of protein G purified sheep IgG in 200 $\mu$ l of 0.1M Tris-glycine, pH 7.4, 0.15M NaCl, 0.05% sodium azide before the addition of glycerol to 30%. Liquid at -20°C.

**Storage and Stability:** Stable for 2 years at -20°C from date of shipment. For maximum recovery of product, centrifuge the vial prior to removing the cap.

**FOR RESEARCH USE ONLY  
NOT FOR USE IN HUMANS**

### Quality Control Testing

**Immunoblot Analysis:** 0.5-2.0 $\mu$ g/ml of this lot detected recombinant ATF2 (Catalog # 12-367), phosphorylated by JNK1 $\alpha$ 1/SAPK1c, active (Catalog # 14-327) using a cold kinase assay.



### General Reference:

Cuenda, A., *et al.*, EMBO J. **16**: 295-305, 1997.

### Immunoblot Protocol

1. Perform SDS-polyacrylamide gel electrophoresis (SDS-PAGE) on ATF2 (Catalog # 12-367), phosphorylated by JNK1 $\alpha$ 1/SAPK1c, active (Catalog # 14-327) in a cold kinase assay and transfer to nitrocellulose. Wash the blotted nitrocellulose twice with water.
2. Block the blotted nitrocellulose in freshly prepared 5% nonfat dry milk (Catalog # 20-200) in TBS with 0.05% Tween<sup>®</sup>-20 (TBST-MLK) for 30 minutes at room temperature with constant agitation.
3. Incubate the nitrocellulose with **0.5-2.0 $\mu$ g/ml of anti-phospho-ATF2 (Ser90)**, diluted in freshly prepared TBST-MLK overnight with agitation at 4°C.
4. Wash the nitrocellulose twice with water.
5. Incubate the nitrocellulose in the secondary reagent of choice (a rabbit anti-sheep HRP conjugated IgG, Catalog # 12-342, 1:5000 dilution was used) in TBST-MLK for 1.5 hours with agitation at room temperature.
6. Wash the nitrocellulose twice with water.
7. Wash the nitrocellulose in TBS-0.05% Tween<sup>®</sup>-20 for 3-5 minutes.
8. Rinse the nitrocellulose in 4-5 changes of water.
9. Use detection method of choice (enhanced chemiluminescence was used).