

Normal Rabbit IgG

Polyclonal Antibody

Cat. # 12-370

Lot # DAM1632090

pack size: 250 µg

Store at -20°C

FOR RESEARCH USE ONLY
NOT FOR USE IN HUMANS



Certificate of Analysis

page 1 of 2

Applications	Species Cross-Reactivity	Antibody Isotype	Epitope/Region	Host Species	Molecular Weight	Accession #
IP, WB	N/A	IgG	N/A	Rb	N/A	N/A

Background

Immunoglobulin G (IgG), is one of the most abundant proteins in human serum with normal levels between 8-17 mg/mL in adult blood. IgG is important for our defense against microorganisms and the molecules are produced by B lymphocytes as a part of our adaptive immune response. The IgG molecule has two separate functions; to bind to the pathogen that elicited the response and to recruit other cells and molecules to destroy the antigen. The variability of the IgG pool is generated by somatic recombination and the number of specificities in an individual at a given time point is estimated to be 1011 variants.

Presentation

Purified rabbit polyclonal IgG in buffer containing 0.1 M Tris-glycine, pH 7.4, 0.15 M NaCl, with 0.05% sodium azide before the addition of glycerol to 30%. Liquid at -20°C.

Concentration

1 mg/mL

Storage and Handling

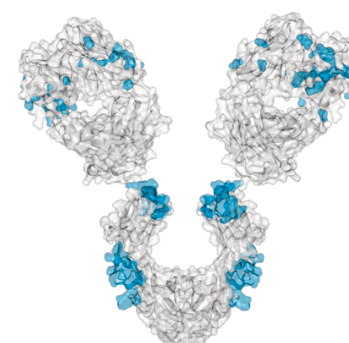
Stable for 1 year at -20°C from date of receipt.

For maximum recovery of product centrifuge the original vial prior to removing the cap. Handling Recommendations: Upon first thaw, and prior to removing the cap, centrifuge the vial and gently mix the solution. Aliquot into microcentrifuge tubes and store at -20°C. Avoid repeated freeze/thaw cycles, which may damage IgG and affect product performance. Note: Variability in freezer temperatures below -20°C may cause glycerol containing solutions to become frozen during storage.

Quality Control Testing

Routinely evaluated by IP/WB as a non-specific IgG control.

Immunoprecipitation/Western Blot Assay: 2 µg of this lot was used as a non-specific IgG control in an immunoprecipitation / western blot assay.



References

1. Siegel, P. M., et al. (2003). *J Biol Chem.* 278:35444-35450 (2003).

APPLICATION LEGEND: WB Western Blotting IP Immunoprecipitation IC Immunocytochemistry IF Immunofluorescence
IH Immunohistochemistry (Tissue)

SPECIES LEGEND: H Human M Mouse R Rat Rb Rabbit WR Most Common Vertebrates

Please visit www.millipore.com for additional product information, test data and references.

Submit your published journal article, and earn credit toward future Millipore purchases. Visit www.millipore.com/publication_rewards to learn more!

upstate | CHEMICON | Linco

THE EXPERTISE OF UPSTATE®, CHEMICON® AND LINCO®
IS NOW A PART OF MILLIPORE

Normal Rabbit IgG

Cat # 12-370
Lot # DAM1632090

RELATED PRODUCTS (specific)

cat #	description
2185	■ Chicken IgY Precipitating Agarose
AQ406-655	■ Chicken IgY, Goat anti- (highly cross adsorbed) Quantum Dot 655 Conjugated
AP194A	■ Donkey anti-Chicken IgY, Alk Phos Conjugated, Species Adsorbed: Hu, Ms, Rt, Bov, Gt, GP, Hrs, Rb, Shp
AP194B	■ Donkey anti-Chicken IgY, Biotin Conjugated, Species Adsorbed: Hu, Ms, Rt, Bov, Gt, GP, Hrs, Rb, Shp
AP194C	■ Donkey anti-Chicken IgY, Cy3 Conjugated, Species Adsorbed: Hu, Ms, Rt, Bov, Gt, GP, Hrs, Rb, Shp
AP194S	■ Donkey anti-Chicken IgY, Cy5 Conjugated, Species Adsorbed: Hu, Ms, Rt, Bov, Gt, GP, Hrs, Rb, Shp
AP194F	■ Donkey anti-Chicken IgY, FITC Conjugate, Species Adsorbed: Hu, Ms, Rt, Bov, Gt, GP, Hrs, Rb, Shp
AP194P	■ Donkey anti-Chicken IgY, HRP Conjugated, Species Adsorbed: Hu, Ms, Rt, Bov, Gt, GP, Hrs, Rb, Shp
AP194R	■ Donkey anti-Chicken IgY, Rhodamine Conjugated, Species Adsorbed: Hu, Ms, Rt, Bov, Gt, GP, Hrs, Rb, Shp
AP194	■ Donkey anti-Chicken IgY, unlabeled, Species Adsorbed: Hu, Ms, Rt, Bov, Gt, GP, Hrs, Rb, Shp
AP503B	■ GOAT ANTI-CHICKEN IgG (H+L), BIOTIN CONJUGATED
CC1025	■ Human Integrin alphaVbeta5, Triton X-100 Formulation
AG30P	■ IgE, myeloma
AG124	■ IgE, Rat
AG714	■ IgG, Fc Fragment

RELATED PRODUCTS (non-specific)

cat #	description
IPVH00010	■ Immobilon-P 26.5 cm x 3.75 m Roll PVDF 0.45 µm
IPFL00010	■ Immobilon-FL 26.5 cm x 3.75 m Roll PVDF 0.45 µm
IPVH07850	■ Immobilon-P 7 x 8.4 cm PVDF 0.45 mm (sheet) 50/pk
ISEQ00010	■ Immobilon-P SQ 26.5 cm x 3.75 m 1 roll PVDF 0.2 µm
ISEQ07850	■ Immobilon-P 7 x 8.4 cm PVDF 0.2 mm (sheet) 50/pk
IPFL07810	■ Immobilon-FL 7 x 8.4 cm PVDF 0.45 mm (sheet) 10/pk
WBKLS0100	■ Immobilon Western Chemilum HRP Substrate 100 mL
17-373	■ Spray & Glow™ ECL WB Detection System 1 ea
2060	■ Re-Blot Western Blot Recycling Kit
2500	■ Re-Blot Plus Western Blot Recycling Kit
B2080-175GM	■ Blot Quick Blocker Membrane Blocking Agent 175G

■ antibodies ■ Multiplex products ■ biotools ■ cell culture ■ enzymes ■ kits ■ proteins/peptides ■ siRNA/cDNA products

Please visit www.millipore.com for additional product information, test data and references

28820 Single Oak Drive • Temecula, CA 92590

Technical Support: T: 1-800-MILLIPORE (1-800-645-5476) • F: 1-800-437-7502

FOR RESEARCH USE ONLY. Not for use in diagnostic or therapeutic applications. Purchase of this Product does not include any right to resell or transfer, either as a stand-alone product or as a component of another product. Any use of this Product for purposes other than research is strictly prohibited without prior written authorization from an authorized officer of Millipore Corporation.

Upstate®, Chemicon® and all other trademarks are owned by Millipore Corporation. Copyright ©2008 Millipore Corporation. All rights reserved.



We Buy 100% Certified Renewable Energy