

# Goat Anti-Rabbit IgG, HRP-conjugate

Polyclonal Antibody

Cat. # 12-348

Lot # DAM1588253

pack size: 500 µg

Store at -20°C

FOR RESEARCH USE ONLY



## Certificate of Analysis

page 1 of 2

Applications	Species Cross-Reactivity	Antibody Isotype	Epitope/Region	Host Species	Molecular Weight	Accession #
WB, ELISA, IH	Rb	IgG	N/A	Gt	N/A	N/A

### Background

Immunoglobulin G (IgG), is one of the most abundant proteins in human serum with normal levels between 8-17 mg/mL in adult blood. IgG is important for our defence against microorganisms and the molecules are produced by B lymphocytes as a part of our adaptive immune response. The IgG molecule has two separate functions; to bind to the pathogen that elicited the response and to recruit other cells and molecules to destroy the antigen. The variability of the IgG pool is generated by somatic recombination and the number of specificities in an individual at a given time point is estimated to be 1011 variants.

### Presentation

Goat polyclonal conjugated with horseradish peroxidase IgG in buffer containing 50% storage buffer 0.02 M potassium phosphate, 0.15 M NaCl, pH 7.2, 10 mg/mL BSA, 0.01% (w/v) gentamicin sulfate and 50% glycerol.

**Rehydration:** Add 500 µL sterile, distilled water containing 50% glycerol, to make a 1 mg/mL stock solution.

### Concentration

1 mg/mL

### Specificity

Specific for rabbit IgG heavy and light chains.

### Species Cross-reactivity

Rabbit.

### Immunogen

Highly purified whole rabbit IgG.

### Storage and Handling

**Lyophilized:** Stable for 1 year at -20°C from date of receipt.

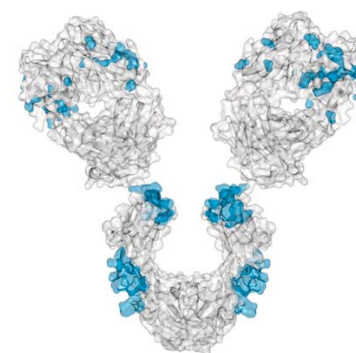
**Rehydrated:** Stable for 6 months at -20°C from date of receipt.

**Handling Recommendations:** Upon first thaw, and prior to removing the cap, centrifuge the vial and gently mix the solution. Aliquot into microcentrifuge tubes and store at -20°C. Avoid repeated freeze/thaw cycles, which may damage IgG and affect product performance. Note: Variability in freezer temperatures below -20°C may cause glycerol containing solutions to become frozen during storage.

### Quality Control Testing

Evaluated by western blot.

**Western Blot Analysis:** Suitable for western blotting (dot blot), ELISA and immunohistochemistry. A working dilution of 1:15,000 to 1:60,000 is suggested for ELISA. A working dilution of 1:2,000 to 1:6,000 is suggested for western blotting procedures. A working dilution of 1:500 to 1:3,000 is suggested for immunohistochemistry. Optimal antibody dilution for other applications should be determined by the researcher.



### References

1. Yamasaki, S., et al. (2001). *J Biol Chem*. 276: 45175-83.

**APPLICATION LEGEND:** WB Western Blotting IP Immunoprecipitation IC Immunocytochemistry IF Immunofluorescence  
IH Immunohistochemistry (Tissue) ELISA Enzyme-linked Immunosorbent Assay

**SPECIES LEGEND:** H Human Gt Goat M Mouse R Rat Rb Rabbit WR Most Common Vertebrates

Please visit [www.millipore.com](http://www.millipore.com) for additional product information, test data and references.

Submit your published journal article, and earn credit toward future Millipore purchases. Visit [www.millipore.com/publicationrewards](http://www.millipore.com/publicationrewards) to learn more!

upstate | CHEMICON | Linco

THE EXPERTISE OF UPSTATE®, CHEMICON® AND LINCO®  
IS NOW A PART OF MILLIPORE

**RELATED PRODUCTS (specific)**

cat #	description
AB201-20	■ Anti-Donkey anti-Rabbit IgG
AB201-100ML	■ Anti-Donkey anti-Rabbit IgG, heavy and light chains
AB7132F	■ Anti-IgG, FITC Conjugated, Gamma & Light Chain Specific
AB7130F	■ Anti-Sheep anti-Rabbit IgG, FITC Conjugated
AP158	■ Chicken anti-Rabbit IgG
AP169F	■ Chicken anti-Rabbit IgG, (H+L) FITC Conjugated
AP169P	■ Chicken anti-Rabbit IgG, Affinity Purified, Horseradish Peroxidase Conjugated
AP158B	■ Chicken anti-Rabbit IgG, Biotin-SP-Conjugated
AP182F	■ Donkey anti-Rabbit IgG, (H+L) FITC Conjugated, Species Adsorbed: Hu, Ms, Rt, Bov, Gt, Sh, Chk, GP, Eq
AP182A	■ Donkey anti-Rabbit IgG, Alkaline Phosphatase Conjugated, Species Adsorbed: Hu, Ms, Rt, Bov, Gt, Sh, Chk, GP, Eq
AP182M	■ Donkey anti-Rabbit IgG, AMCA Conjugated, Species Adsorbed: Hu, Ms, Rt, Bov, Gt, Sh, Chk, GP, Eq
AP182B	■ Donkey anti-Rabbit IgG, Biotin-SP-Conjugated, Species Adsorbed: Hu, Ms, Rt, Bov, Gt, Sh, Chk, GP, Eq
AP182C	■ Donkey anti-Rabbit IgG, Cy3-Conjugated, Species Adsorbed: Hu, Ms, Rt, Bov, Gt, Sh, Chk, GP, Eq
AP182S	■ Donkey anti-Rabbit IgG, Cy5 Conjugated, Species Adsorbed: Hu, Ms, Rt, Bov, Gt, Sh, Chk, GP, Eq
AB201	■ Donkey anti-Rabbit IgG, heavy and light chains
AP182P	■ Donkey anti-Rabbit IgG, Peroxidase Conjugated, Species Adsorbed: Hu, Ms, Rt, Bov, Gt, Sh, Chk, GP, Eq
AP182R	■ Donkey anti-Rabbit IgG, Rhodamine Conjugated, Species Adsorbed: Hu, Ms, Rt, Bov, Gt, Sh, Chk, GP, Eq
AP182	■ Donkey anti-Rabbit IgG, unlabeled, Species Adsorbed: Hu, Ms, Rt, Bov, Gt, Sh, Chk, GP, Eq
AP132	■ Goat anti-Rabbit IgG
AQ132	■ Goat anti-Rabbit IgG, (H+L) Affinity Purified F(ab') <sub>2</sub>
AQ132A	■ Goat anti-Rabbit IgG, (H+L) Alkaline Phosphatase Conjugated Affinity Purified F(ab') <sub>2</sub>
AQ132M	■ Goat anti-Rabbit IgG, (H+L) AMCA Conjugated Absorbed for Dual Labeling Affinity Purified F(ab') <sub>2</sub>
AQ132B	■ Goat anti-Rabbit IgG, (H+L) Biotin-SP-Conjugated Affinity Purified F(ab') <sub>2</sub>
AP307F	■ Goat anti-Rabbit IgG, (H+L) FITC Conjugated
AP132F	■ Goat anti-Rabbit IgG, (H+L) FITC Conjugated
AP187F	■ Goat anti-Rabbit IgG, (H+L) FITC Conjugated, Species Adsorbed: Hu, Ms, Rt
12-507	■ Goat Anti-Rabbit IgG (H+L), fluorescein conjugate
12-510	■ Goat Anti-Rabbit IgG (H+L), rhodamine conjugate
12-448	■ Goat Anti-Rabbit IgG, AP conjugate
12-348	■ Goat Anti-Rabbit IgG, HRP conjugate

**RELATED PRODUCTS (non-specific)**

cat #	description
IPVH00010	■ Immobilon-P 26.5 cm x 3.75 m Roll PVDF 0.45 µm
IPFL00010	■ Immobilon-FL 26.5 cm x 3.75 m Roll PVDF 0.45 µm
IPVH07850	■ Immobilon-P 7 x 8.4 cm PVDF 0.45 mm (sheet) 50/pk
ISEQ00010	■ Immobilon-P SQ 26.5 cm x 3.75 m 1 roll PVDF 0.2 µm
ISEQ07850	■ Immobilon-P 7 x 8.4 cm PVDF 0.2 mm (sheet) 50/pk
IPFL07810	■ Immobilon-FL 7 x 8.4 cm PVDF 0.45 mm (sheet) 10/pk
WBKLS0100	■ Immobilon Western Chemilum HRP Substrate 100 mL
17-373	■ Spray & Glow™ ECL WB Detection System 1 ea
2060	■ Re-Blot Western Blot Recycling Kit
2500	■ Re-Blot Plus Western Blot Recycling Kit
B2080-175GM	■ Blot Quick Blocker Membrane Blocking Agent 175G

■ antibodies ■ Multiplex products ■ biotools ■ cell culture ■ enzymes ■ kits ■ proteins/peptides ■ siRNA/cDNA products

Please visit [www.millipore.com](http://www.millipore.com) for additional product information, test data and references

28820 Single Oak Drive • Temecula, CA 92590

Technical Support: T: 1-800-MILLIPORE (1-800-645-5476) • F: 1-800-437-7502

**FOR RESEARCH USE ONLY.** Not for use in diagnostic or therapeutic applications. Not for human or animal consumption. Purchase of this Product does not include any right to resell or transfer, either as a stand-alone product or as a component of another product. Any use of this Product for purposes other than research is strictly prohibited without prior written authorization from an authorized officer of Millipore Corporation.

Upstate®, Chemicon®, Linco® and all other trademarks are owned by Millipore Corporation. Copyright ©2008-2009 Millipore Corporation. All rights reserved.



We Buy 100% Certified Renewable Energy