

Certificate of Analysis

28820 Single Oak Drive • Temecula, CA 92590
Technical Support: T: 800 437-7500 • F: 800 437-7502
www.millipore.com

Anti-FADD, clone 1F7
(mouse monoclonal IgG₁)
Catalog # 05-486
Lot # DAM1513045

Immunogen: GST-tagged full-length fusion protein corresponding to human FADD. Clone 1F7.

Specificity: Recognizes FADD, Mr 28kDa.

Species Cross-reactivity: Human and mouse.

Formulation: 100µg of protein A purified mouse IgG₁ in 100µl of 50% storage buffer (PBS, pH 7.2) and 50% glycerol.

Storage and Stability: Stable for 2 years at -20°C from date of shipment.

Handling Recommendations: Upon receipt, and prior to removing the cap, centrifuge the vial and gently mix the solution. Aliquot into microcentrifuge tubes and store at -20°C. **Avoid repeated freeze/thaw cycles, which may damage IgG and affect product performance.** Note: Variability in freezer temperatures below -20°C may cause glycerol-containing solutions to become frozen during storage.

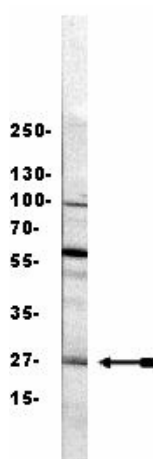
FOR IN VITRO RESEARCH USE ONLY
NOT FOR USE IN HUMANS OR ANIMALS

Quality Control Testing

Immunoblot Analysis: 0.5-2µg/ml of this lot detected FADD in RIPA lysates from Jurkat cells.

Included Positive Antigen Control: Catalog # 12-303, Jurkat cell lysate. **Add 2.5µl of 2-mercaptoethanol per 100µl of lysate and boil for 5 minutes to reduce the preparation.** Load 20µg of reduced lysate per lane for minigels.

Immunoprecipitation: This antibody has been demonstrated by an independent laboratory to immunoprecipitate FADD.³

**Immunoblot Analysis**

Representative blot from a previous lot. Jurkat cell lysate was resolved by electrophoresis, transferred to nitrocellulose and probed with anti-FADD (1µg/ml). Proteins were visualized using a goat anti-mouse secondary antibody conjugated to HRP and a chemiluminescence detection system. Arrow indicates FADD (~28kDa).

Application Reference:

1. McDonald III, E., *et al.*, *J. Biol. Chem.* **276**: 14939-14945, 2001.
2. Curtin, J. F. and Cotter, T. G., *J. Biol. Chem.* **279**: 17090-100, 2004.
3. Xerri, L., *et al.*, *Brit. J. Haema.* **106**: 652-62, 1999.

General Reference:

4. Chinnaiyan, A.M., *et al.*, *Cell* **81**: 505-512, 1995.

Immunoblot Protocol

1. Perform SDS-polyacrylamide gel electrophoresis (SDS-PAGE) on a cell lysate sample (cell lysis buffer: 50mM Tris-HCl, pH7.4; 1% NP-40; 0.25% sodium deoxycholate; 150mM NaCl; 1mM EDTA; 1mM PMSF; 1µg/ml each aprotinin, leupeptin, pepstatin; 1mM Na₃VO₄; 1mM NaF) and transfer the proteins to nitrocellulose. Wash the blotted nitrocellulose twice with water.
2. Block the blotted nitrocellulose in freshly prepared TBS containing 3% nonfat dry milk (Catalog # 20-200), (TBS-MLK) for 20-60 minutes at room temperature with constant agitation.
3. Incubate the nitrocellulose with **0.5-2µg/ml of anti-FADD, clone 1F7**, diluted in freshly prepared TBS-MLK overnight with agitation at 4°C.
4. Wash the nitrocellulose twice with water.
5. Incubate the nitrocellulose in the secondary reagent of choice (a goat anti-mouse HRP conjugated IgG, Catalog # 12-349, 1:3000 dilution was used) in TBS-MLK for 1.5 hours at room temperature with agitation.
6. Wash the nitrocellulose with water twice.
7. Wash the nitrocellulose in PBS-0.05% Tween 20 for 15 minutes.
8. Rinse the nitrocellulose in 4-5 changes of water.
9. Use detection method of choice (enhanced chemiluminescence was used).

Unless otherwise stated in our catalog or other company documentation accompanying the product(s), our products are intended for research use only and are not to be used for any other purpose, which includes but is not limited to, unauthorized commercial uses, in vitro diagnostic uses, ex vivo or in vivo therapeutic uses or any type of consumption or application to humans or animals.