

## Certificate of Analysis

28820 Single Oak Drive • Temecula, CA 92590  
 Technical Support: T: 800 437-7500 • F: 800 437-7502  
 www.millipore.com

Anti-phospho-Akt1/PKB $\alpha$  (Ser473), clone SK703

(rabbit monoclonal IgG)

Catalog # 05-736

Lot # JBC1377938

**Immunogen:** KLH-conjugated, synthetic peptide containing a pSer that corresponds to amino acid position 473 of human Akt1/PKB $\alpha$ . The immunizing sequence is identical in mouse and bovine Akt1. Akt2 and Akt3 share significant homology with the peptide immunogen sequence.

**Specificity:** Recognizes phosphorylated Akt1/PKB $\alpha$ , Mr 60kDa. Cross-reactivity to phosphorylated Akt2 and Akt3 likely based on sequence homology.

**Species Cross-reactivity:** Human and mouse. Predicted cross-reactivity with rat, bovine, chicken, and *Xenopus* based on immunogen sequence homology.

**Formulation:** 100 $\mu$ g of protein A purified rabbit IgG in 207 $\mu$ l of 70% storage buffer (0.1M Tris-glycine, pH 7.4, 0.15M NaCl, 0.05% sodium azide) and 30% glycerol. Store at -20°C.

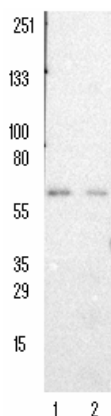
**Storage and Stability:** Stable for 2 years at -20°C from date of shipment.

**Handling Recommendations:** Upon receipt, and prior to removing the cap, centrifuge the vial and gently mix the solution. Aliquot into microcentrifuge tubes and store at -20°C. **Avoid repeated freeze/thaw cycles, which may damage IgG and affect product performance.** Note: Variability in freezer temperatures below -20°C may cause glycerol-containing solutions to become frozen during storage.

FOR RESEARCH USE ONLY  
 NOT FOR USE IN HUMANS

## Quality Control Testing

**Immunoblot Analysis:** 0.05-0.5 $\mu$ g/ml of this lot detected phosphorylated Akt1/PKB $\alpha$  in lysates from mouse NIH-3T3 fibroblasts treated with 100ng/ml PDGF for 20 minutes.

**Immunoblot Analysis**

Representative blot from a previous lot. PDGF stimulated (lane 1) and untreated (Lane 2) NIH-3T3 cell lysate was resolved by electrophoresis, transferred to nitrocellulose and probed with anti-phospho-Akt1/PKB $\alpha$  (Ser473) 1:5000, Lanes 1 and 2. Proteins were visualized using a goat anti-rabbit secondary antibody conjugated to HRP and a chemiluminescence detection system. Arrow indicates phosphorylated Akt1/PKB $\alpha$  (~60kDa).

**General References:**

1. Cross, D.A., *et al.*, *Nature* **378**: 785-789, 1995.
2. James, S.R., *et al.*, *Biochem. J.* **315**: 709-713, 1996.
3. Alessi, D.R., *et al.*, *Curr. Biol.* **8**: 69-81, 1998.
4. Alessi, D.R., *et al.*, *Curr. Biol.* **7**: 776-789, 1997.
5. Cohen, P., *et al.*, *FEBS Lett.* **410**: 3-10, 1997.

Unless otherwise stated in our catalog or other company documentation accompanying the product(s), our products are intended for research use only and are not to be used for any other purpose, which includes but is not limited to, unauthorized commercial uses, in vitro diagnostic uses, ex vivo or in vivo therapeutic uses or any type of consumption or application to humans or animals.

### Immunoblot Protocol

1. Perform SDS-polyacrylamide gel electrophoresis (SDS-PAGE) on a cell lysate sample (cell lysis buffer: 50mM Tris-HCl, pH 7.4; 1% NP-40; 0.25% sodium deoxycholate; 150mM NaCl; 1mM EDTA; 1mM PMSF; 1 $\mu$ g/ml each aprotinin, leupeptin, pepstatin; 1mM Na<sub>3</sub>VO<sub>4</sub>; 1mM NaF) and transfer the proteins to nitrocellulose. Wash the blotted nitrocellulose twice with water.
2. Block the blotted nitrocellulose in freshly prepared TBS containing 3% nonfat dry milk (Catalog # 20-200) and 0.05% Tween<sup>®</sup>-20 (TBST-MLK) for 1 hour at room temperature with constant agitation.
3. Incubate the nitrocellulose with **1:1000 – 1:10,000 dilution of anti-phospho-Akt1/PKB $\alpha$  (Ser473)**, diluted in freshly prepared TBST-MLK for overnight with agitation at 4C.
4. Wash the nitrocellulose three times with water.
5. Incubate the nitrocellulose in the secondary reagent of choice (a goat anti-rabbit HRP conjugated IgG, Catalog # 12-348, 1:5000 dilution was used) in TBST-MLK for 2 hours at room temperature with agitation.
6. Rinse the nitrocellulose with water twice.
7. Wash the nitrocellulose in TBS-0.05% Tween<sup>®</sup>-20 for 3-5 minutes.
8. Wash the nitrocellulose three times with water.
9. Use detection method of choice (enhanced chemiluminescence was used).

Produced in collaboration with **EPITOMICS**

Unless otherwise stated in our catalog or other company documentation accompanying the product(s), our products are intended for research use only and are not to be used for any other purpose, which includes but is not limited to, unauthorized commercial uses, in vitro diagnostic uses, ex vivo or in vivo therapeutic uses or any type of consumption or application to humans or animals.

©2008: Millipore Corporation. All rights reserved. No part of these works may be reproduced in any form without permission in writing.