

Certificate of Analysis

Protein G Agarose/Salmon Sperm DNA Catalog # 16-201 Lot # DAM1557507

Product Description: Recombinant Protein G covalently bound to agarose by cyanogen bromide linkage. Sonicated salmon sperm DNA blocks non-specific DNA binding sites on protein G agarose when collecting immunocomplexes for chromatin immunoprecipitations (ChIP assays).

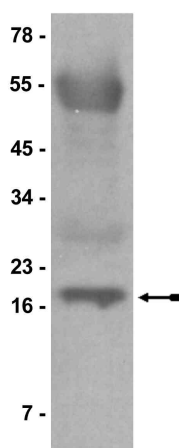
Quantity and Formulation: 2.5 mL packed beads containing 1 mg sonicated salmon sperm DNA, 2.5 mg BSA and approximately 5 mg recombinant Protein G. Provided as a 50% gel slurry for a final volume of 5 mL per vial. Suspended in 10 mM Tris-HCl, 1 mM EDTA, pH 8.0, containing 0.05% sodium azide. Liquid suspension.

Storage and Stability: Stable for 1 year at 4°C from date of shipment.

**FOR IN VITRO RESEARCH USE ONLY
 NOT FOR USE IN HUMANS OR ANIMALS**

Quality Control Testing

Chromatin Immunoprecipitation: 80 µL of this lot of gel slurry pre-cleared supernatant from sodium butyrate treated HeLa cells. Subsequently, 60 µL of this lot immunoprecipitated DNA cross-linked to acetylated histones using either anti-Acetyl Histone H3, ChIP Grade (Catalog # 06-599) or anti-RNA Polymerase II, clone CTD4H8 (Catalog # 05-623). Testing was performed in conjunction with the Acetyl Histone H3 ChIP Assay Kit (Catalog # 17-245) or the EZ-ChIP Assay Kit (Catalog # 17-371).



Chromatin Immunoprecipitation

Representative blot from a previous lot. Using the Acetyl Histone H3 ChIP Assay Kit (Catalog # 17-245), supernatant from sodium butyrate treated HeLa cells was pre-cleared by 80µL of this lot of Protein G Agarose/ Salmon Sperm DNA. Subsequently, 60µL of this lot immunoprecipitated DNA cross-linked to acetylated histones using anti-Acetyl Histone H3, ChIP Grade (Catalog # 06-599). Proteins were resolved by electrophoresis, transferred to nitrocellulose, and probed with anti-Acetyl Histone H3, ChIP Grade (Catalog # 06-599) (1 µg/mL). Proteins were then visualized using a goat anti-rabbit IgG conjugated to HRP and a chemiluminescence detection system. Arrow indicates Histone H3 (~17 kDa).

Chromatin Immunoprecipitation Protocol

Part A. Optimization of DNA Shearing

Establish optimal conditions required for shearing cross-linked DNA to 200-1000 base pairs in length by following steps 1- 9 below. Vary the power setting and/or the number of 10-second pulses during sonication of the samples. Be sure to keep the sample on ice at all times (the sonication generates heat which will denature the DNA). Check the size of sonicated DNA by gel electrophoresis after reversion of cross-links. Our experience shows DNA is sheared to the appropriate length with 3-4 sets of 10-second pulses using a Cole Parmer, High Intensity Ultrasonic Processor/Sonicator, 50-watt model equipped with a 2mm tip and set to 30% of maximum power. **Once sonication conditions have been optimized, keep cell number consistent for subsequent experiments. The protocol below for the optimization of DNA Shearing is for one ChIP assay (~1 x 10⁶ cells per condition).**

Note: Steps 3- 7 should be done on ice.

1. Stimulate or treat 1 x 10⁶ cells on a 10 cm dish as appropriate. (Cells should be treated under conditions for which transcriptional activation of the gene of interest has been demonstrated). Include one extra dish (1 X 10⁶ cells) to be used solely for estimation of cell number.
2. Cross link histones to DNA by adding formaldehyde directly to culture medium to a final concentration of 1% and incubate for 10 minutes at 37°C. (For example, add 270 µL 37% formaldehyde into 10 mL of growth medium on plate).
3. Aspirate medium, removing as much medium as possible. Wash cells twice using ice cold PBS containing protease inhibitors (1 mM pefabloc SC (AEBSF), 1 µg/ml aprotinin and 1 µg/mL pepstatin A). **Note:** Add protease inhibitors to PBS just prior to use.
4. Scrape cells into conical tube.
5. Pellet cells for 4 minutes at 2000 rpm at 4°C. Wash with **SDS Lysis Buffer (Catalog # 20-163)** to room temperature to dissolve precipitated SDS and add protease inhibitors (inhibitors: 1 mM AEBSF, 1 µg/mL aprotinin and 1 µg/mL pepstatin A).
6. Resuspend cell pellet in 200 µL of **SDS Lysis Buffer (Catalog # 20-163)** and incubate for 10 minutes on ice. **Note:** The 200 µL of SDS Lysis Buffer is per 1 X 10⁶ cells; if more cells are used, the resuspended cell pellet should be divided into 200 µL aliquots so that each 200 µL aliquot contains ~1 X 10⁶ cells.
7. Sonicate lysate to shear DNA to lengths between 200 and 1000 basepairs being sure to keep samples ice cold (**Note:** Once sonication conditions have been optimized following steps 1 to 9, proceed to Part B, step 1 below).
8. Add 8 µL of **5 M NaCl (Catalog # 20-159)** and reverse crosslinks at 65°C for 4 hours.
9. Recover DNA by phenol/chloroform extraction and run sample (example 5 µL, 10 µL and 20 µL samples) in an agarose gel to visualize shearing efficiency.

Part B. Experimental Protocol.

If sonication conditions have been optimized (Part A), complete steps 1 through 7 and continue with the protocol below. For a negative/background control, prepare a sample to use as a no-antibody immunoprecipitation control in step 5 below. Additionally, transcriptionally unactivated DNA samples should be prepared as controls for PCR in section II.

1. Centrifuge samples (part A, step 7) for 10 minutes at 13,000 rpm at 4°C, and add 200 µL of the sonicated cell supernatant to a new 2 mL-microcentrifuge tube. Discard pellet.

2. Dilute the sonicated cell supernatant 10 fold in **ChIP Dilution Buffer (Catalog # 20-153)**, adding protease inhibitors as above. This is done by adding 1800 μ L ChIP Dilution Buffer to the 200 μ L sonicated cell supernatant for a final volume of 2 mL in each immunoprecipitation condition. **Note:** *If proceeding to PCR a portion of the diluted cell supernatant 1% (~20 μ L) can be kept to quantitate the amount of DNA present in different samples at the PCR protocol, Part B, section II, step 6. This sample is considered to be your input/starting material and needs to have the Histone-DNA crosslinks reversed by heating at 65°C for 4 hours (see section II, step 3.).*
3. To reduce nonspecific background, pre-clear the 2 mL diluted cell supernatant with 80 μ L of **Protein G Agarose/Salmon Sperm DNA (50% slurry)** for 30 minutes at 4°C with agitation.
4. Pellet agarose by brief centrifugation and collect the supernatant fraction.
5. Add the immunoprecipitating antibody (the amount will vary per antibody) to the 2 mL supernatant fraction and incubate overnight at 4°C with rotation. *For a negative control, perform a no-antibody immunoprecipitation by incubating the supernatant fraction with 60 μ L of **Protein G Agarose/Salmon Sperm DNA- 50% Slurry** for one hour at 4°C with rotation and proceed to step 7.*
6. Add 60 μ L of **Protein G Agarose/Salmon Sperm DNA (50% slurry)** for one hour at 4°C with rotation to collect the antibody/histone complex.
7. Pellet agarose by gentle centrifugation (700 to 1000 rpm at 4°C, ~1 min). Carefully remove the supernatant that contains unbound, non-specific DNA. Wash the protein G agarose/antibody/histone complex for 3-5 minutes on a rotating platform with 1 mL of each of the buffers listed in the order as given below:
 - a. Low Salt Immune Complex Wash Buffer (Catalog # 20-154), **one wash**
 - b. High Salt Immune Complex Wash Buffer (Catalog # 20-155), **one wash**
 - c. LiCl Immune Complex Wash Buffer (Catalog # 20-156), **one wash**
 - d. TE Buffer (Catalog # 20-157), **two washes**

After step 7 above, the sample is now a protein G/antibody/histone/DNA complex ready for either an Immunoprecipitation/Immunoblot assay (Section I) or Polymerase Chain Reaction (PCR) assay (Section II):

Section I. Immunoprecipitation/Immunoblot protocol to detect histone.

1. Following washing of the beads in part B, step 7, immunoprecipitated histones can be analyzed by immunoblot analysis. Add 25 μ L of 1X Laemmli buffer per sample and boil for 10 minutes. Load 20 μ L per lane and perform immunoblot procedure as described per appropriate antibody.

Section II. PCR protocol to amplify DNA that is bound to the immunoprecipitated histone.

1. Freshly prepare elution buffer (1%SDS, 0.1M NaHCO₃).
2. Elute the histone complex from the antibody by adding 250 μ L elution buffer to the pelleted protein G agarose/antibody/histone complex from step 7d above. Vortex briefly to mix and incubate at room temperature for 15 minutes with rotation. Spin down agarose, and carefully transfer the supernatant fraction (eluate) to another tube and repeat elution. Combine eluates (total volume = ~500 μ L).
3. Add 20 μ L 5M NaCl (Catalog # 20-159) to the combined eluates (500 μ L) and reverse histone-DNA crosslinks by heating at 65°C for 4 hours. At this step the sample can be stored at -20°C and the protocol continued the next day.

Note: Include the input/starting material (*the sample saved from Part B, step 2, which has had the Histone-DNA crosslinks reversed*) as well as a transcriptionally-unactivated DNA sample as negative and background controls for the PCR reaction. *Previously, a 5 μ L sample has been used in a nested PCR reaction. However, the amount of sample used per reaction must be determined empirically (e.g., titrate the sample at this step by using 1, 2, 5, or 10 μ L per PCR reaction).* If PCR results are poor, complete steps 4, 5 and 6 below to purify the DNA sample. NOTE: Handle the samples carefully, some DNA may be lost during the purification steps.

4. Add 10 μ L of 0.5 M EDTA (Catalog # 20-158), 20 μ L 1 M Tris-HCl, pH 6.5 (Catalog # 20-160) and 2 μ L of 10 mg/mL Proteinase K to the combined eluates and incubate for one hour at 45°C.
5. Recover DNA by phenol/chloroform extraction and ethanol precipitation. Addition of an inert carrier, such as 20 μ g glycogen or yeast tRNA, helps visualize the DNA pellet. Wash pellets with 70% ethanol and air dry.
6. Resuspend pellets in an appropriate buffer for PCR or slot-blot reactions. PCR or slot-blot conditions must be determined empirically.

Unless otherwise stated in our catalog or other company documentation accompanying the product(s), our products are intended for research use only and are not to be used for any other purpose, which includes but is not limited to, unauthorized commercial uses, in vitro diagnostic uses, ex vivo or in vivo therapeutic uses or any type of consumption or application to humans or animals.

©2007: Millipore Corporation. All rights reserved. No part of these works may be reproduced in any form without permission in writing.

28820 Single Oak Drive • Temecula, CA 92590
Technical Support: T: 800 437-7500 • F: 800 437-7502
www.millipore.com