

**Certificate of Analysis**

28820 Single Oak Drive • Temecula, CA 92590  
Technical Support: T: 800 437-7500 • F: 800 437-7502  
www.millipore.com

**Anti-Lck, clone 3A5**  
(mouse monoclonal IgG<sub>2bκ</sub>)  
Catalog # 05-435  
Lot # DAM1408804

**Immunogen:** GST-fusion protein corresponding to amino acids 1-225 of murine Lck.

**Specificity:** Recognizes and is specific for Lck, Mr 56kDa. Clone 3A5.

**Species Cross-reactivity:** Mouse, human and rat. Other species cross-reactivity not tested.

**Formulation:** 100μg of protein A purified IgG<sub>2bκ</sub> in 100μl of 10mM PBS, pH 7.4. Frozen at -20°C.

**Storage and Stability:** Stable for 2 years at -20°C from date of shipment.

**Handling Recommendations:** Upon receipt, and prior to removing the cap, centrifuge the vial and gently mix the solution. Aliquot into microcentrifuge tubes and store at -20°C. **Avoid repeated freeze/thaw cycles, which may damage IgG and affect product performance.**

**FOR RESEARCH USE ONLY  
NOT FOR USE IN HUMANS**

**Quality Control Testing**

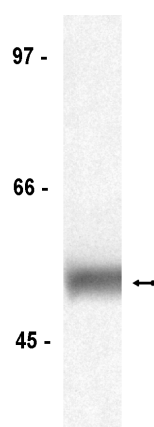
**Immunoblot Analysis:** 0.5-2μg/ml of this lot detected Lck in RIPA lysates from Jurkat cells.

**Included Positive Antigen Control:** Catalog # 12-303, Jurkat cell lysate. **Add 2.5μl of 2-mercaptoethanol/100μl of lysate and boil for 5 minutes to reduce the preparation.** Load 20μg of reduced lysate per lane for minigels.

**Immunoprecipitation:** 3μg of a previous lot immunoprecipitated Lck from 1mg of Jurkat RIPA lysate.

**Additional Research Applications**

**Immunoprecipitation Kinase Assay:** Reported to immunoprecipitate enzymatically active Lck as determined by immune complex kinase assays.

**Immunoblot Analysis**

Representative blot from a previous lot. Jurkat cell lysate was resolved by electrophoresis, transferred to nitrocellulose and probed with anti-Lck (0.5μg/ml). Proteins were visualized using a goat anti-mouse secondary antibody conjugated to HRP and a chemiluminescence detection system. Arrow indicates Lck (~56kDa).

**General References:**

1. Ley, S.C., *et al.*, *J. Cell. Biol.* **125**: 639-649, 1994.
2. Omri, B., *et al.*, *J. Neurochem.* **67**: 1360-1364, 1996.

### Immunoblot Protocol

1. Perform SDS-polyacrylamide gel electrophoresis (SDS-PAGE) on a cell lysate sample (cell lysis buffer: 50mM Tris-HCl, pH7.4; 1% NP-40; 0.25% sodium deoxycholate; 150mM NaCl; 1mM EDTA; 1mM PMSF; 1 $\mu$ g/ml each aprotinin, leupeptin, pepstatin; 1mM Na<sub>3</sub>VO<sub>4</sub>; 1mM NaF) and transfer the proteins to nitrocellulose. Wash the blotted nitrocellulose twice with water.
2. Block the blotted nitrocellulose in freshly prepared PBS containing 3% nonfat dry milk (Catalog # 20-200), (PBS-MLK) for 20 minutes at room temperature with constant agitation.
3. Incubate the nitrocellulose with **0.5-2 $\mu$ g/ml of anti-Lck**, diluted in freshly prepared PBS-MLK overnight with agitation at 4 $^{\circ}$ C.
4. Wash the nitrocellulose twice with water.
5. Incubate the nitrocellulose in the secondary reagent of choice (a **goat anti-mouse** HRP conjugated IgG, Catalog # 12-349, 1:5000 dilution was used) in PBS-MLK for 1.5 hours at room temperature with agitation.
6. Wash the nitrocellulose with water twice.
7. Wash the nitrocellulose in PBS-0.05% Tween 20 for 3-5 minutes.
8. Rinse the nitrocellulose in 4-5 changes of water.
9. Use detection method of choice (enhanced chemiluminescence was used).

### Immunoprecipitation Protocol

1. Dilute the cell lysate before beginning the immunoprecipitation to roughly 1 $\mu$ g/ $\mu$ l total cell protein in a microcentrifuge tube with PBS.
2. Add **3 $\mu$ g of anti-Lck** to 500 $\mu$ g-1mg cell lysate.
3. Gently rock the reaction mixture at 4 $^{\circ}$ C overnight.
4. Capture the immunocomplex by adding 50 $\mu$ l (25 $\mu$ l packed beads) of washed Protein A agarose bead slurry (Catalog # 16-125).
5. Gently rock the reaction mixture at 4 $^{\circ}$ C for 2 hours.
6. Collect the agarose beads by pulsing (5 seconds in the microcentrifuge at 14,000 x g), and drain off the supernatant. Wash the beads 3 times with either ice-cold cell lysis buffer or PBS.
7. Resuspend the agarose beads in 60 $\mu$ l 2X Laemmli sample buffer.
8. Store the beads frozen for future analysis or boil the beads for 5 minutes.
9. Collect the beads after boiling using a microcentrifuge pulse.
10. Perform SDS-PAGE and immunoblot analysis on a sample of the supernatant fraction.

Unless otherwise stated in our catalog or other company documentation accompanying the product(s), our products are intended for research use only and are not to be used for any other purpose, which includes but is not limited to, unauthorized commercial uses, in vitro diagnostic uses, ex vivo or in vivo therapeutic uses or any type of consumption or application to humans or animals.