

# Anti-Galactocerebroside, clone mGalC

Monoclonal Antibody

Cat. # MAB342

Lot # LV1583052

pack size: 50 µg

Store at -20°C

FOR RESEARCH USE ONLY



## Certificate of Analysis

page 1 of 2

Applications	Species Cross-Reactivity	Antibody Isotype	Epitope/Region	Host Species	Molecular Weight	Accession #
WB, ELISA, IH, IC	B, H, M, R, Rb	IgG3	N/A	M	~75 kDa	NM_000153.2

### Background

Galactocerebroside (GalC) is a major galactosphingolipid of myelin which plays a role in myelination. GalC is a very useful, specific marker for oligodendroglial lineage.

### Presentation

Purified mouse monoclonal in buffer containing 10 mM Potassium Phosphate, 150 mM NaCl, pH 7.4 containing 0.09% sodium azide.

### Concentration

1 mg/mL

### Specificity

Galactocerebroside (GalC), sulfatide, psychosine and other galactolipids. Cross-reacts with the sulfatide ester of GalC, but to a 16-fold lesser extent. No cross-reactivity with sphingosine, ceramide, mixed ganglioside or glucocerebroside. Binds specifically with oligodendrocytes and Schwann cells.

### Immunogen

Synaptic plasma membranes from bovine hippocampus

### Method of Purification

Protein A Purified

### Storage and Handling

Stable for 6 months at -20°C in undiluted aliquots from date of receipt.

Handling Recommendations: Upon receipt, and prior to removing the cap, centrifuge the vial and gently mix the solution. Aliquot into microcentrifuge tubes and store at -20°C. Avoid repeated freeze/thaw cycles, which may damage IgG and affect product performance..

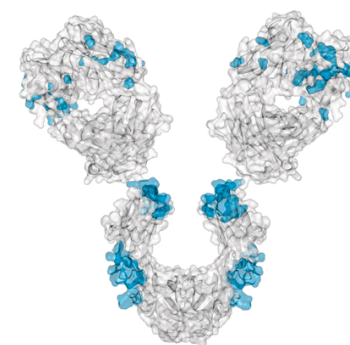
### Control

Neonatal cortex

### Quality Control Testing

Evaluated by Western Blot on PC12 lysates.

Western Blotting Analysis: 1:500 dilution of this antibody detected Galactocerebroside on 10 µg of PC12 lysates.



### References

1. Chu, Mien-Sheng, *et al.* (2006). *Cell Signal*. 18:519-30.
2. Morishita, H, *et al.* (2004). *Eur J Neurosci*. 20:2843-2847.
3. Sonntag, K., *et al.* (2004). *European Journal of Neuroscience*. 19:1141-1152.
4. Patte-Mensah, C., *et al.* (2003). *J. Neurochemistry*. (2003) 86:1233-1246.

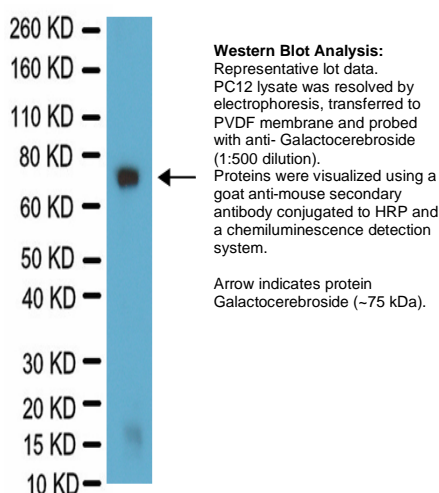
### Additional Research Applications

Immunohistochemistry: 0.5-10 µg/mL of a previous lot was used on formalin fixed frozen sections of a previous lot. Can not be used on paraffin embedded tissue sections since the antigen is denatured during embedding and paraffin removal.

Immunocytochemistry: 0.5-10 µg/mL of a previous lot was used on 4% paraformaldehyde, acetic acid or ethanol fixed cultured cells.

ELISA: A previous lot was used on purified galactocerebroside.

Optimal working dilutions must be determined by the end user.



**APPLICATION LEGEND:** WB Western Blotting ELISA Enzyme-linked Immunosorbent Assay IP Immunoprecipitation IC Immunocytochemistry IF Immunofluorescence IH Immunohistochemistry (Tissue)

**SPECIES LEGEND:** B Bovine H Human M Mouse R Rat Rb Rabbit WR Most Common Vertebrates

**Please visit [www.millipore.com](http://www.millipore.com) for additional product information, test data and references.**

Submit your published journal article, and earn credit toward future Millipore purchases. Visit [www.millipore.com/publicationrewards](http://www.millipore.com/publicationrewards) to learn more!

upstate | CHEMICON | Linco

THE EXPERTISE OF UPSTATE®, CHEMICON® AND LINCO® IS NOW A PART OF MILLIPORE

Rev. A/2008-07-09/MAB342CA/JM

**Anti-Galactocerebroside, clone mGalC**Cat # MAB342  
Lot # LV1583052**PROTOCOL****Western Blot**

1. Perform SDS-polyacrylamide gel electrophoresis (SDS-PAGE) on cell lysate and transfer the proteins to a PVDF membrane. Wash the PVDF membrane twice with water.
2. Block the blotted PVDF membrane in freshly prepared 5% BSA or milk with 0.05% Tween<sup>®</sup>-20 for 1 hour at room temperature with constant agitation.
3. Incubate the PVDF with the recommended dilution of Anti-Galactocerebroside, clone mGalC diluted in freshly prepared 5% BSA or milk for 1 hour at room temperature or overnight with agitation at 2-8°C.
4. Wash the PVDF 3 times with TBST.
5. Incubate the PVDF in the secondary reagent of choice (a Donkey anti-Mouse IgG, HRP conjugate, Catalog # AP192P 1:1000 dilution was used) in 5% milk for 1 hour with agitation at room temperature.
6. Wash the PVDF 3-5 times with TBST.
7. Use Spray and Glow Catalog # 17-373 to visualize results. Use as directed.

**RELATED PRODUCTS (specific)**

cat #	description
AB142	■ Anti-Galactocerebroside
AP124P	■ Goat anti-Mouse IgG, Peroxidase Conjugated, H+L

**RELATED PRODUCTS (non-specific)**

cat #	description
IPVH00010	■ Immobilon-P 26.5 cm x 3.75 m Roll PVDF 0.45 µm
IPFL00010	■ Immobilon-FL 26.5 cm x 3.75 m Roll PVDF 0.45 µm
IPVH07850	■ Immobilon-P 7 x 8.4 cm PVDF 0.45 mm (sheet) 50/pk
ISEQ00010	■ Immobilon-P SQ 26.5 cm x 3.75 m 1 roll PVDF 0.2 µm
ISEQ07850	■ Immobilon-P 7 x 8.4 cm PVDF 0.2 mm (sheet) 50/pk
IPFL07810	■ Immobilon-FL 7 x 8.4 cm PVDF 0.45 mm (sheet) 10/pk
WBKLS0100	■ Immobilon Western Chemilum HRP Substrate 100 mL
17-373	■ Spray & Glow™ ECL WB Detection System 1 ea
2060	■ Re-Blot Western Blot Recycling Kit
2500	■ Re-Blot Plus Western Blot Recycling Kit
B2080-175GM	■ Blot Quick Blocker Membrane Blocking Agent 175G

■ antibodies ■ Multiplex products ■ biotools ■ cell culture ■ enzymes ■ kits ■ proteins/peptides ■ siRNA/cDNA products

Please visit [www.millipore.com](http://www.millipore.com) for additional product information, test data and references

28820 Single Oak Drive • Temecula, CA 92590

Technical Support: T: 1-800-MILLIPORE (1-800-645-5476) • F: 1-800-437-7502

**FOR RESEARCH USE ONLY.** Not for use in diagnostic or therapeutic applications. Not for human or animal consumption. Purchase of this Product does not include any right to resell or transfer, either as a stand-alone product or as a component of another product. Any use of this Product for purposes other than research is strictly prohibited without prior written authorization from an authorized officer of Millipore Corporation.

Upstate®, Chemicon®, Linco® and all other trademarks are owned by Millipore Corporation. Copyright ©2008-2009 Millipore Corporation. All rights reserved.



We Buy 100% Certified Renewable Energy