

# Anti-HESCA-2, clone 060818-7A6

Monoclonal Antibody

Cat. # MAB4406-20uL

Lot # JBC1500637

pack size: 20uL

Store at 2-8°C  
DO NOT FREEZE

FOR RESEARCH USE ONLY  
NOT FOR USE IN HUMANS



## Certificate of Analysis

page 1 of 2

Applications	Species Cross-Reactivity	Antibody Isotype	Epitope/Region	Host Species	Molecular Weight	Accession #
IC, WB, IP	H	IgM $\kappa$	N/A	M	>250 kDa	N/A

### Background

Anti-HESCA-2, developed by Abeome Corporation, recognizes a newly discovered cell surface marker that has been shown to be specific for human embryonic stem cells (hESC), and may serve as a useful tool in the identification, characterization, and isolation of undifferentiated hES cells from differentiating hESC and feeder cell types.

### Presentation

Purified mouse monoclonal IgM $\kappa$  in PBS with 0.05% sodium azide.

### Concentration

1 mg/mL

### Specificity

This antibody is positive by immunofluorescence against H1, H9, BG-01, BG01v, and BF02 human embryonic stem (hES) cell lines, and has not been shown to react with differentiated stem cells in teratomas and common feeder lines such as MEF, D-551, and Hs27. Reactivity with other hES lines has not yet been determined.

### Species Cross-reactivity

Reacts with human. Reactivity to other species has not been determined.

### Immunogen

Human embryonic stem cells (BG01v)

### Molecular Weight

>250 kDa

### Method of Purification

Ammonium Sulfate Precipitation

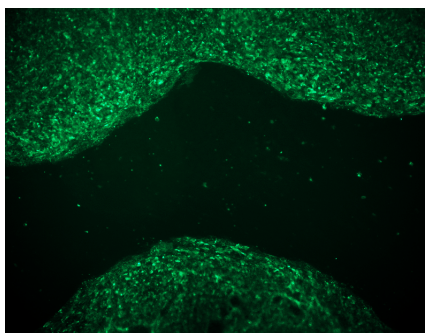
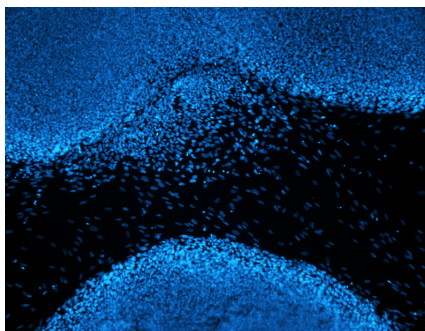
### Storage and Handling

Maintain refrigerated at 2-8°C in undiluted aliquots for up to 1 year from date of receipt.

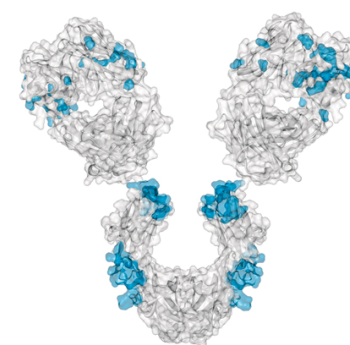
### Research Applications

(Based upon representative data from a previous lot).

#### Immunocytochemistry:



H9 (WA09) human ES cells labeled with the HESCA-2 antibody, Cat. No. MAB4406 (lower, green) and DAPI (upper, blue). Only pluripotent human ES cells are labeled by HESCA-2; note that the antibody does not recognize the cells differentiating from the upper human ES cell colony or the cells making up the human fibroblast feeder layer surrounding the human ES cells. Labeling was done via indirect fluorescence using a fluorescein-conjugated goat anti-mouse IgM secondary antibody (Catalog No. AP128F)



### Additional Research Applications

#### Western Blot:

Western blot was successfully performed using this antibody to detect a >250 kDa cell surface protein.

#### Immunoprecipitation:

This antibody has been validated for immunoprecipitation.

**APPLICATION LEGEND:** WB Western Blotting IP Immunoprecipitation IC Immunocytochemistry IF Immunofluorescence  
IH Immunohistochemistry (Tissue) FC Flow Cytometry (FACS)

**SPECIES LEGEND:** H Human M Mouse R Rat Rb Rabbit WR Most Common Vertebrates

**Please visit [www.millipore.com](http://www.millipore.com) for additional product information, test data and references.**

Submit your published journal article, and earn credit toward future Millipore purchases. Visit [www.millipore.com/publication\\_rewards](http://www.millipore.com/publication_rewards) to learn more!

upstate | CHEMICON | Linco

THE EXPERTISE OF UPSTATE®, CHEMICON® AND LINCO®  
IS NOW A PART OF MILLIPORE

**Anti-HESCA-2, clone 060818-7A6**Cat # MAB4406  
Lot # JBC1500637**RELATED PRODUCTS (specific)**

cat #	description
MAB4407	■ Anti-HESCA-1, clone 051007-4A5
MAB4408	■ Anti-ShSCP-5, clone 8H9.3
MAB4401	■ Anti-Oct-4, clone 10H11.2
MAB4303	■ Anti-Stage-Specific Embryonic Antigen-3, clone MC-631
MAB4304	■ Anti-Stage-Specific Embryonic Antigen-4, clone MC-813-70
MAB4343	■ Anti-Sox-2, clone 6F1.2
AB4304	■ Anti-Pramel-4
AB4305	■ Anti-Pramel-5
SCR001	■ ES Cell Characterization Kit
SCR002	■ ES Cell Marker Sample Kit

**RELATED PRODUCTS (non-specific)**

cat #	description
IPVH00010	■ Immobilon-P 26.5 cm x 3.75 m Roll PVDF 0.45 µm
IPFL00010	■ Immobilon-FL 26.5 cm x 3.75 m Roll PVDF 0.45 µm
IPVH07850	■ Immobilon-P 7 x 8.4 cm PVDF 0.45 mm (sheet) 50/pk
ISEQ00010	■ Immobilon-P SQ 26.5 cm x 3.75 m 1 roll PVDF 0.2 µm
ISEQ07850	■ Immobilon-P 7 x 8.4 cm PVDF 0.2 mm (sheet) 50/pk
IPFL07810	■ Immobilon-FL 7 x 8.4 cm PVDF 0.45 mm (sheet) 10/pk
WBKLS0100	■ Immobilon Western Chemilum HRP Substrate 100 mL
17-373	■ Spray & Glow™ ECL WB Detection System 1 ea
2060	■ Re-Blot Western Blot Recycling Kit
2500	■ Re-Blot Plus Western Blot Recycling Kit
B2080-175GM	■ Blot Quick Blocker Membrane Blocking Agent 175G

■ antibodies ■ Multiplex products ■ biotools ■ cell culture ■ enzymes ■ kits ■ proteins/peptides ■ siRNA/cDNA products

Please visit [www.millipore.com](http://www.millipore.com) for additional product information, test data and references

**FOR RESEARCH USE ONLY.** Not for use in diagnostic or therapeutic applications. Purchase of this Product does not include any right to resell or transfer, either as a stand-alone product or as a component of another product. Any use of this Product for purposes other than research is strictly prohibited without prior written authorization from an authorized officer of Millipore Corporation.

Upstate®, Chemicon® and all other trademarks are owned by Millipore Corporation. Copyright ©2007 Millipore Corporation. All rights reserved.