

Certificate of Analysis

Anti-Bcl2, clone 100
(mouse monoclonal IgG₁)
Catalog # 05-729
Lot # DAM1644086

Immunogen: Synthetic peptide corresponding to amino acids 41-54 of human Bcl2 protein. The immunizing sequence is identical in canine and feline.

Specificity: Bcl2, Mr 26kDa.

Species Cross-reactivity: Human. Predicted to cross-react with feline and canine, based on sequence homology.

Formulation: 100µg protein G purified mouse IgG₁ in 100µl of 70% storage buffer (PBS with 0.1% sodium azide) and 30% glycerol. Store at -20°C.

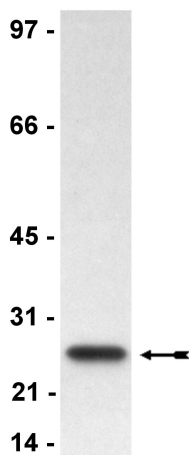
Storage and Stability: Stable for 2 years at -20°C from date of shipment.

Handling Recommendations: Upon receipt, and prior to removing the cap, centrifuge the vial and gently mix the solution. Aliquot into microcentrifuge tubes and store at -20°C. **Avoid repeated freeze/thaw cycles, which may damage IgG and affect product performance.** Note: Variability in freezer temperatures below -20°C may cause glycerol-containing solutions to become frozen during storage.

FOR RESEARCH USE ONLY
NOT FOR USE IN HUMANS

Quality Control Testing

Immunoblot Analysis: 0.5-2µg/ml of this lot detected Bcl2 in a Raji RIPa cell lysate.



Immunoblot Analysis
Representative blot from a previous lot. Raji cell lysate was resolved by electro-phoresis, transferred to nitro-cellulose and probed with anti-Bcl2 (1.0µg/ml). Proteins were visualized using a goat anti-mouse secondary antibody con-jugated to HRP and a chemi-luminescence detection system. Arrow indicates Bcl2 (~26kDa).

Additional Research Applications

Immunohistochemistry: An independent laboratory has reported that this antibody detects Bcl2 in paraffin and acetone-fixed tissues.^{1,2,3}

FACS Analysis: Recommended.

Application References:

1. Pezzella, F., *et al.*, *Am. J. Pathol.* **137**: 225-232, 1990.
2. Pezzella, F., *et al.*, *J. Cancer* **65**: 87-89, 1992.
3. Pezzella, F., *et al.*, *New Eng. J. Med.* **329**: 690-694, 1993.

Immunoblot Protocol

1. Perform SDS-polyacrylamide gel electrophoresis (SDS-PAGE) on a cell lysate sample (cell lysis buffer: 50mM Tris-HCl, pH 7.4; 1% NP-40; 0.25% sodium deoxycholate; 150mM NaCl; 1mM EDTA; 1mM PMSF; 1µg/ml aprotinin, leupeptin, pepstatin; 1mM Na₃VO₄; 1mM NaF) and transfer the proteins to nitrocellulose. Wash the blotted nitrocellulose twice with water.
2. Wash the blotted nitrocellulose with PBS-0.05% Tween[®]-20 for 10 minutes.
3. Block the blotted nitrocellulose in freshly prepared PBS containing 3% nonfat dry milk (Catalog # 20-200) and 0.05% Tween[®]-20 (PBST-MLK) for 20 minutes at room temperature with constant agitation.
4. Incubate the nitrocellulose with **0.5-2µg/ml of anti-Bcl2**, diluted in freshly prepared PBST-MLK overnight with agitation at 4°C.
5. Wash the nitrocellulose twice with water.
6. Incubate the nitrocellulose in the secondary reagent of choice (a goat anti-mouse HRP conjugated IgG, Catalog # 12-349, 1:5000 dilution, was used) in PBST-MLK for 1 hour at room temperature with agitation.
7. Wash the nitrocellulose twice with water.
8. Wash the nitrocellulose in PBS-0.05% Tween[®]-20 for 3-5 minutes.
9. Rinse the nitrocellulose in 4-5 changes of water.
10. Use detection method of choice (enhanced chemiluminescence was used).

Unless otherwise stated in our catalog or other company documentation accompanying the product(s), our products are intended for research use only and are not to be used for any other purpose, which includes but is not limited to, unauthorized commercial uses, in vitro diagnostic uses, ex vivo or in vivo therapeutic uses or any type of consumption or application to humans or animals.

