

# Anti-Myelin Associated Glycoprotein, clone 513

Monoclonal Antibody

**Cat. # MAB1567**

Lot # LV1415052

**pack size: 100 µg**

FOR RESEARCH USE ONLY  
NOT FOR USE IN HUMANS

Store at -20°C



## Certificate of Analysis

page 1 of 2

Applications	Species Cross-Reactivity	Antibody Isotype	Epitope/Region	Host Species	Molecular Weight	Accession #
WB, IC, IH	B, Ch, H, M, R, Fg	IgG1	N/A	M	100 kDa	NP_002352

### Background

Myelin-associated glycoprotein (MAG), a member of the immunoglobulin superfamily, is a membrane glycoprotein of 100 kDa, and is thought to be involved in the process of myelination. Axonal regeneration in the adult central nervous system (CNS) is limited by two proteins in myelin, Nogo and MAG. MAG has been implicated in the inhibition of nerve regeneration in the CNS.

### Presentation

Purified mouse monoclonal IgG1 in buffer containing 10 mM potassium phosphate buffer, 50 mM NaCl, pH 7.5. Contains no preservative.

### Concentration

1 mg/mL

### Specificity

Detects Myelin Associated Glycoprotein (MAG) in immunohistochemistry on frozen sections, immunocytochemistry and Western blot (under non-reducing conditions). MAB1567 is useful for myelinogenesis and multiple sclerosis studies.

### Species Cross-reactivity

Human, rat, mouse, bovine, chicken, frog.

### Immunogen

L2 epitope carrying glycoprotein extract of 1-2 day old chicken brain.

### Molecular Weight

100 kDa

### Method of Purification

Protein A Purified

### Storage and Handling

Stable for 6 months at -20°C in undiluted aliquots from date of receipt.

Handling Recommendations: Upon first thaw, and prior to removing the cap, centrifuge the vial and gently mix the solution. Aliquot into microcentrifuge tubes and store at -20°C. Avoid repeated freeze/thaw cycles, which may damage IgG and affect product performance.

### Control

Rat hippocampus tissue, rat brain lysate, PC12 cells.

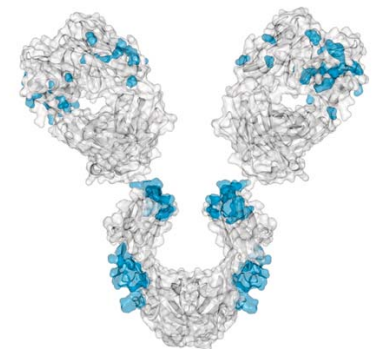
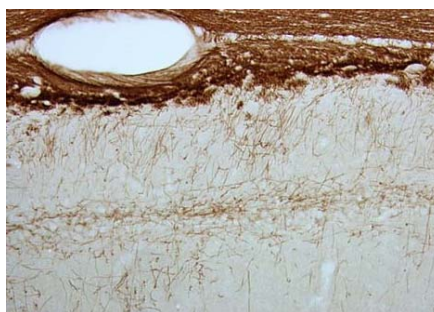
### Research Applications

Evaluated by immunohistochemistry on rat hippocampus.

#### Immunohistochemistry(paraffin):

Representative image from a previous lot.

Mouse anti-Myelin Associated Glycoprotein [MAG] (Catalog Number MAB1567) localization of MAG in rat hippocampus. Photo courtesy of Dr. Robert Sloviter, University of Arizona.



### References

1. Trillo-Pazos, G., et al. (2004). *Neuropathol. Appl. Neurobiol.* 30(2):136-147.
2. Goolsby, J., et al. (2003). *PNAS.* 100:14926-14931.
3. Ellezam, B., et al. (2003). *Neurobiol Disease.* 12:1-10.
4. Pang, Y., et al. (2000). *J. Neurosci. Res.* 62(4):510-520.
5. Collins, BE., et al. (1997). *J Biol Chem.* 272(27):16889-16895.

### Additional Research Applications

Western Blot: 20 µg/mL of a previous lot was used on western blot under non-reducing conditions only.

Immunocytochemistry: 5-10 µg/mL of a previous lot was used, methanol fixation required.

**APPLICATION LEGEND:** WB Western Blotting IP Immunoprecipitation IC Immunocytochemistry IF Immunofluorescence  
IH Immunohistochemistry (Tissue)

**SPECIES LEGEND:** B Bovine Ch Chicken Fg Frog H Human M Mouse R Rat Rb Rabbit WR Most Common Vertebrates

**Please visit [www.millipore.com](http://www.millipore.com) for additional product information, test data and references.**

Submit your published journal article, and earn credit toward future Millipore purchases. Visit [www.millipore.com/publicationrewards](http://www.millipore.com/publicationrewards) to learn more!

upstate | CHEMICON | Linco

THE EXPERTISE OF UPSTATE®, CHEMICON® AND LINCO® IS NOW A PART OF MILLIPORE

**Important Note:** During shipment, small volumes of product will occasionally become entrapped in the seal of the product vial. For products with volumes of 200 µL or less, we recommend gently tapping the vial on a hard surface or briefly centrifuging the vial in a tabletop centrifuge to dislodge any liquid in the container's cap.

**PROTOCOL**

**Immunocytochemistry**

- 1) Oligodendrocytes are cultivated on slides and fixed with methanol for 10 min at -20°C in the middle log-phase.
- 2) After blocking the nonspecific binding sites with 5% FCS the cells are incubated with the properly diluted MAB1567 in a humid chamber for one hour at room temperature.
- 3) Afterwards cells are washed and incubated with anti-Mouse IgG-FITC. The slides are washed and covered appropriately.

**RELATED PRODUCTS (specific)**

cat #	description
MAB1567	■ Anti-Myelin Associated Glycoprotein, clone 513

**RELATED PRODUCTS (non-specific)**

cat #	description
IPVH00010	■ Immobilon-P 26.5 cm x 3.75 m Roll PVDF 0.45 µm
IPFL00010	■ Immobilon-FL 26.5 cm x 3.75 m Roll PVDF 0.45 µm
IPVH07850	■ Immobilon-P 7 x 8.4 cm PVDF 0.45 mm (sheet) 50/pk
ISEQ00010	■ Immobilon-P SQ 26.5 cm x 3.75 m 1 roll PVDF 0.2 µm
ISEQ07850	■ Immobilon-P 7 x 8.4 cm PVDF 0.2 mm (sheet) 50/pk
IPFL07810	■ Immobilon-FL 7 x 8.4 cm PVDF 0.45 mm (sheet) 10/pk
WBKLS0100	■ Immobilon Western Chemilum HRP Substrate 100 mL
17-373	■ Spray & Glow™ ECL WB Detection System 1 ea
2060	■ Re-Blot Western Blot Recycling Kit
2500	■ Re-Blot Plus Western Blot Recycling Kit
B2080-175GM	■ Blot Quick Blocker Membrane Blocking Agent 175G

■ antibodies ■ Multiplex products ■ biotools ■ cell culture ■ enzymes ■ kits ■ proteins/peptides ■ siRNA/cDNA products

**Please visit [www.millipore.com](http://www.millipore.com) for additional product information, test data and references**

28820 Single Oak Drive • Temecula, CA 92590

Technical Support: T: 1-800-MILLIPORE (1-800-645-5476) • F: 1-800-437-7502

**FOR RESEARCH USE ONLY.** Not for use in diagnostic or therapeutic applications. Not for human or animal consumption. Purchase of this Product does not include any right to resell or transfer, either as a stand-alone product or as a component of another product. Any use of this Product for purposes other than research is strictly prohibited without prior written authorization from an authorized officer of Millipore Corporation.

Upstate®, Chemicon®, Linco® and all other trademarks are owned by Millipore Corporation. Copyright ©2008-2009 Millipore Corporation. All rights reserved.



We Buy 100% Certified Renewable Energy