

## Certificate of Analysis

28820 Single Oak Drive • Temecula, CA 92590  
 Technical Support: T: 800 437-7500 • F: 800 437-7502  
 www.millipore.com

**Protein A Agarose, Fast Flow**  
 (10mL packed beads)  
 Catalog # 16-156  
 Lot # DAM1429992

**Product Description:** Recombinant Protein A covalently coupled to highly cross-linked 6% agarose beads. Suitable for medium and low-pressure chromatography. Stable in all aqueous buffers used in Protein A chromatography. Recommended for flow rates from 50 to 300cm/hr.

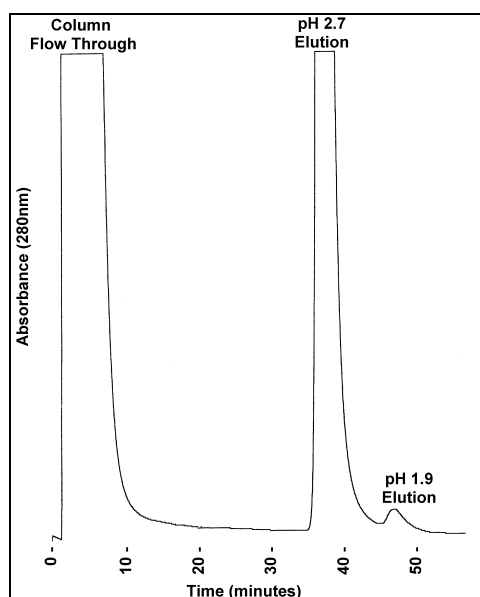
**Quantity and Formulation:** 10mL packed beads, containing 6 mg/mL recombinant Protein A. Suspended as a 50% slurry in sterile distilled water containing 0.01% thimerosal for a final volume of 20 mL. Binding capacity of 40 mg human IgG/mL agarose. Liquid Suspension.

**Storage and Stability:** Stable for 1 year at 4°C from date of shipment.

**FOR RESEARCH USE ONLY  
 NOT FOR USE IN HUMANS**

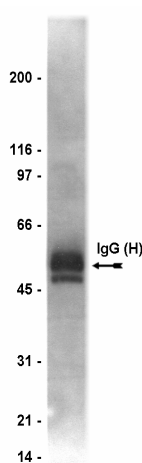
### Quality Control Testing

**Antibody Purification:** Representative elution profile from a previous lot using a 1.7 mL column of recombinant protein A agarose, fast flow, and the IgG from a 1.5 mL sample of rabbit serum. The IgG was purified using a Waters™ 650E Advanced Protein Purification System.



### Additional Research Applications

**Immunoprecipitation:** Use 100µl (50µl packed beads) to capture the immunoprecipitation immunocomplex.



**Elution Profile and Analysis:** Representative gel from a previous lot. 1.5 mL of rabbit antiserum was purified using Recombinant Protein A, Fast Flow. The column eluent was monitored with an UV detector and recorded at 280 nm. A 0.5 µL sample of the pooled purified IgG was separated by SDS-Page on a 4-20% gradient gel and transferred to nitrocellulose. Proteins were visualized using a goat anti-rabbit secondary antibody conjugated to HRP and a chemiluminescence detection system. The arrow indicates the IgG heavy chain. Similar results were seen with Coomassie Stain.

### Immunoprecipitation Protocol

1. Dilute the cell lysate before beginning the immunoprecipitation to roughly 1  $\mu\text{g}/\mu\text{L}$  total cell protein in a microcentrifuge tube with PBS.
2. Add antibody of choice to 500  $\mu\text{g}$ -1mg cell lysate.
3. Gently rock the reaction mixture at 4°C overnight.
4. Capture the immunocomplex by adding 100  $\mu\text{L}$  (50  $\mu\text{L}$  packed beads) of washed **Protein A Agarose, Fast Flow**, bead slurry.
5. Gently rock the reaction mixture at 4°C for 2 hours.
6. Collect the agarose beads by pulsing (5 seconds in the microcentrifuge at 14,000 x g), and drain off the supernatant. Wash the beads 3 times with either ice-cold cell lysis buffer or PBS.
7. Resuspend the agarose beads in 60  $\mu\text{L}$  2X Laemmli sample buffer.
8. Store the beads frozen for future analysis or boil the beads for 5 minutes.
9. Collect the beads after boiling using a microcentrifuge pulse.
10. Perform SDS-PAGE and immunoblot analysis on a sample of the supernatant fraction.

### Antibody Purification Protocol

1. Use a 0.45  $\mu\text{m}$  filter to filter all buffers.
2. Degas all buffers prior to starting purification.
3. Pack **Protein A Agarose, Fast Flow**, into the column of choice, following the column manufacturer's instructions.
4. Wash and equilibrate packed protein A agarose with 10-20 column volumes of Tris buffered saline, pH 7.4 (TBS) at 1 mL/minute flow rate.
5. Load sample containing IgG of interest onto column.
6. Wash column with 10-20 column volumes of TBS to remove unbound and non-specifically bound proteins. This can be determined by measuring the absorbance at 280nm with an inline UV detector. Alternatively, a post column sample can be collected and checked for protein.
7. Elute the bound IgG with 10 mL of 50 mM glycine pH 2.7, collecting 1 mL fractions in tubes containing an antibody neutralization buffer (1 M Tris, pH 8.0, 1.5 M NaCl, 1 mM EDTA). Eluted IgG can be determined by monitoring the absorbance at 280 nm. **NOTE:** Some antibodies bind with high affinity to Protein A and will not elute at pH 2.7, in these cases, 50 mM Glycine pH 1.9 may be used.
8. Wash the column with 10-20 volumes of TBS to restore the agarose column to neutral pH.
9. Store the column in TBS containing either 0.02% sodium azide or 0.01% thimerosal.

Unless otherwise stated in our catalog or other company documentation accompanying the product(s), our products are intended for research use only and are not to be used for any other purpose, which includes but is not limited to, unauthorized commercial uses, in vitro diagnostic uses, ex vivo or in vivo therapeutic uses or any type of consumption or application to humans or animals.