

Certificate of Analysis

Visualizer™ Spray & Glow™ ECL Western Blotting Detection System

Catalog # 17-373SP

Lot # DAM1612136

Product Description: One spray bottle containing 40 mL of Visualizer™ Spray & Glow™ western blotting detection reagent. The Visualizer™ Spray & Glow™ system is a light emitting non-radioactive method for detection of immobilized specific antigens in chemiluminescent Western blots through horseradish peroxidase (HRP) labeled antibodies. The kit is designed for a high, long lasting glow reaction while combining chemiluminescent substrate and enhancer solutions together in one bottle. There is no mixing of solutions required.

Storage and Stability: Stable for 1 year at 4°C from date of shipment.

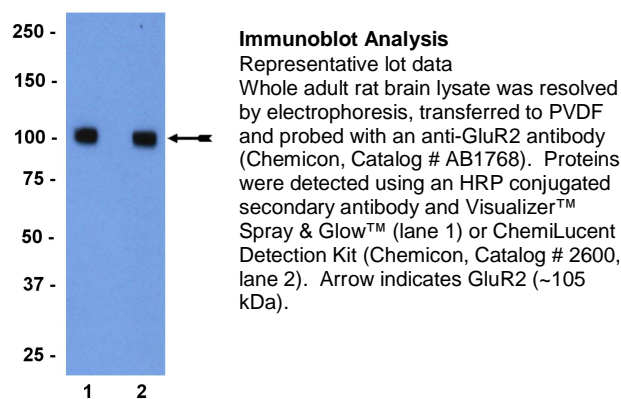
Use: See enclosed protocol. The Visualizer™ Spray & Glow™ Western Blotting Detection System is very sensitive and optimization of the individual assay components (antibodies, conjugates, membranes, etc.) needs to be completed to minimize non-specific reactivities and supply the most robust results.

Visualizer™ and Spray & Glow™ are trademarks of Upstate USA, Inc.

FOR RESEARCH USE ONLY; NOT FOR USE IN DIAGNOSTIC PROCEDURES. NOT FOR HUMAN OR ANIMAL CONSUMPTION

Quality Control Testing

Immunoblot Analysis: The reagents in this kit have been matched to optimize the range and sensitivity of detection using various antibodies in Western blot assays.



Unless otherwise stated in our catalog or other company documentation accompanying the product(s), our products are intended for research use only and are not to be used for any other purpose, which includes but is not limited to, unauthorized commercial uses, in vitro diagnostic uses, ex vivo or in vivo therapeutic uses or any type of consumption or application to humans or animals.

©2008: Millipore Corporation. All rights reserved. No part of these works may be reproduced in any form without permission in writing.

28820 Single Oak Drive • Temecula, CA 92590
 Technical Support: T: 1-800-MILLIPORE (1-800-645-5476) • F: 1-800-437-7502
www.millipore.com

Two of Two
Catalog # 17-373SP
Lot # DAM1612136

Visualizer™ Spray & Glow™ Protocol

To achieve the optimal signal to background ratio, it is essential for the end user to optimize concentrations of both primary and secondary antibodies.

1. Remove the PVDF or nitrocellulose membrane from the last wash and place on a flat surface, protein side up. Do not allow the membrane to dry.
2. Spray the Visualizer™ Spray & Glow™ detection reagent on the surface of the membrane.
Note: *Each single spray of Visualizer™ Spray & Glow™ delivers approximately 500µl. Two sprays is usually sufficient to cover a 5cm x 5cm membrane.*
3. Incubate for 1-5 minutes at room temperature without agitation.
Note: *Incubation for one minute is sufficient for detection of specific proteins. Less specific proteins may require slightly longer incubation times.*
4. Drain off excess detection reagent by holding the membrane vertically and touching the bottom edge against absorbent paper.
Note: *This step is important to remove excess background signal.*
5. Wrap the membrane in plastic wrap and gently smooth out air pockets.
6. Place the membrane in a film cassette, protein side up.
7. Place X-ray film on top of membrane, close the cassette and expose for an appropriate time.
Note: *For abundant proteins, 30 seconds to 5 minutes should be sufficient for adequate exposure. More dilute formulations will require longer exposure times. The appropriate exposure time should be determined by the end user.*

FOR RESEARCH USE ONLY; NOT FOR USE IN DIAGNOSTIC
PROCEDURES. NOT FOR HUMAN OR ANIMAL CONSUMPTION

Unless otherwise stated in our catalog or other company documentation accompanying the product(s), our products are intended for research use only and are not to be used for any other purpose, which includes but is not limited to, unauthorized commercial uses, in vitro diagnostic uses, ex vivo or in vivo therapeutic uses or any type of consumption or application to humans or animals.

©2008: Millipore Corporation. All rights reserved. No part of these works may be reproduced in any form without permission in writing.

28820 Single Oak Drive • Temecula, CA 92590
Technical Support: T: 1-800-MILLIPORE (1-800-645-5476) • F: 1-800-437-7502
www.millipore.com