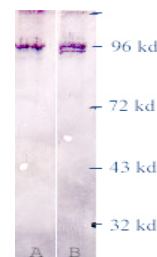


**RABBIT ANTI-PHOSPHOTHREONINE-PROLINE
AFFINITY PURIFIED POLYCLONAL ANTIBODY****CATALOG NUMBER:** AB3192**LOT NUMBER:****QUANTITY:** 100 µg**CONCENTRATION:** 250 µg/mL**SPECIFICITY:** Recognizes the phosphothreonine-proline motif, which is the site of phosphorylation of many proline-directed protein kinase such MAPK and cyclin-dependent protein kinases. Also recognizes the phosphoserine-proline motif to a similar degree. There is no cross reactivity with phosphothreonine, phosphoserine, or phosphotyrosine.**IMMUNOGEN:** KLH-phosphothreonine-proline amide (pT-P-NH₂) peptide conjugates**APPLICATIONS:** Western blot: 2 µg/mL
ELISA: 0.5 µg/mL
Optimal working dilutions must be determined by end user.**ACTIVITY ANALYSIS:** Figure 1. Auto-phosphorylation of the crude mouse brain extracts (50 µg total crude protein) as detected with anti-pT-P antibodies. (Alkaline phosphatase anti-rabbit secondary system.)

Lane A: treated with ATP (0.25 mM) 5 min

Lane B: Without ATP treatment (lower band: phosphorylated protein in less degree)

**SPECIES REACTIVITIES:** All species.**POSITIVE CONTROL:** Mouse brain extract for immunoblotting. Phosvitin or casein for ELISA.**FORMAT:** Affinity purification with phosphothreonine-proline on agarose and immunoabsorption with threonine-proline-NH₂ on agarose.**PRESENTATION:** Liquid in TBS, 50% glycerol with 0.05% Sodium Azide.**STORAGE/HANDLING:** Maintain refrigerated at 2-8°C in undiluted aliquots for up to 12 months.**Important Note:** *During shipment, small volumes of product will occasionally become entrapped in the seal of the product vial. For products with volumes of 200 µL or less, we recommend gently tapping the vial on a hard surface or briefly centrifuging the vial in a tabletop centrifuge to dislodge any liquid in the container's cap.**For research use only; not for use as a diagnostic.*

Unless otherwise stated in our catalog or other company documentation accompanying the product(s), our products are intended for research use only and are not to be used for any other purpose, which includes but is not limited to, unauthorized commercial uses, in vitro diagnostic uses, ex vivo or in vivo therapeutic uses or any type of consumption or application to humans or animals.

©2002 - 2007: Millipore Corporation. All rights reserved. No part of these works may be reproduced in any form without permission in writing

USA & Canada • Phone: +1(800) 437-7500 • Fax: +1 (951) 676-9209 • Europe +44 (0) 23 8026 2233
Australia +61 3 9839 2000
www.millipore.com