



MILLIPLEX[®] MAG

Your Source for Magnetic and Non-Magnetic Bead Kits!

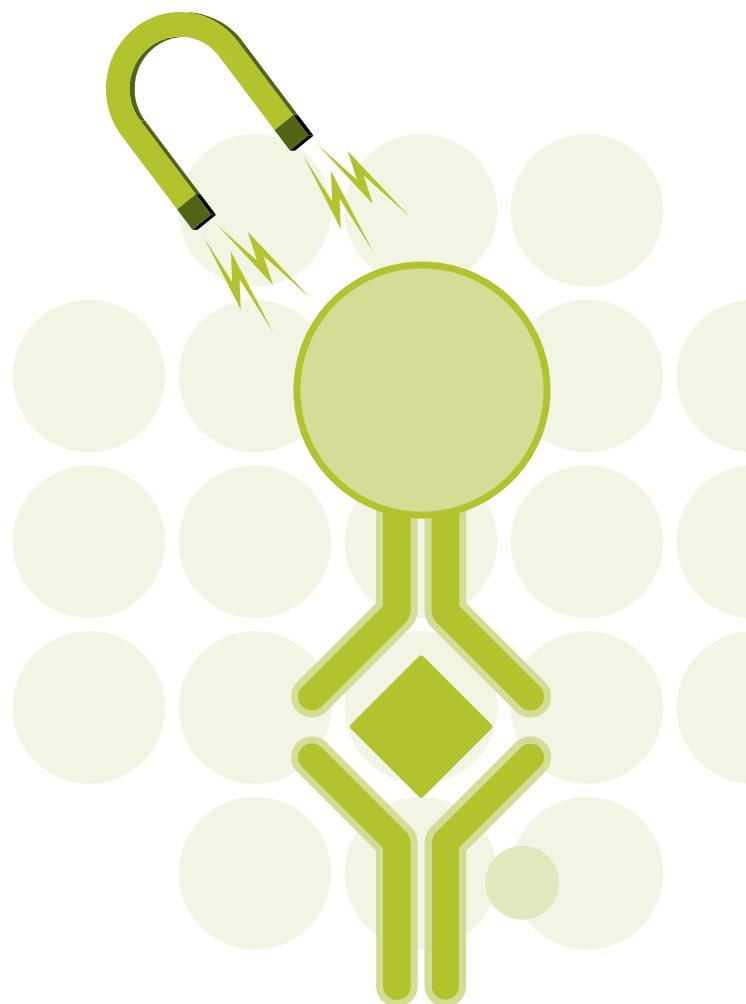
Millipore now offers two multiplex immunoassay formats for use with Luminex[®] xMAP[®] technology, so you can decide which format is best for your lab.

- **MILLIPLEX MAP** - our original non-magnetic bead kits
- **MILLIPLEX MAG** - our new magnetic bead kits

Our new MILLIPLEX *MAG* multiplex kits use the same Luminex instrumentation, contain identical components (except for the beads), and perform with the same quality and consistency as our MILLIPLEX *MAP* kits. Now you have a choice!

Highlights:

- **Walk-away washing** – Simultaneous full-plate washing for higher throughput
- **Flexible** – Compatible with traditional vacuum manifold / filter plates or magnetic bead washers
- **Efficient** - Simultaneously detect multiple analytes in a small sample size (10-50 μ L)
- **Customizable** - Select only the analytes you need or choose a pre-mixed kit
- **Consistent** - Lower, more consistent coefficients of variation (CVs)
- **Convenient** – Packaged in a single kit with a single catalog number

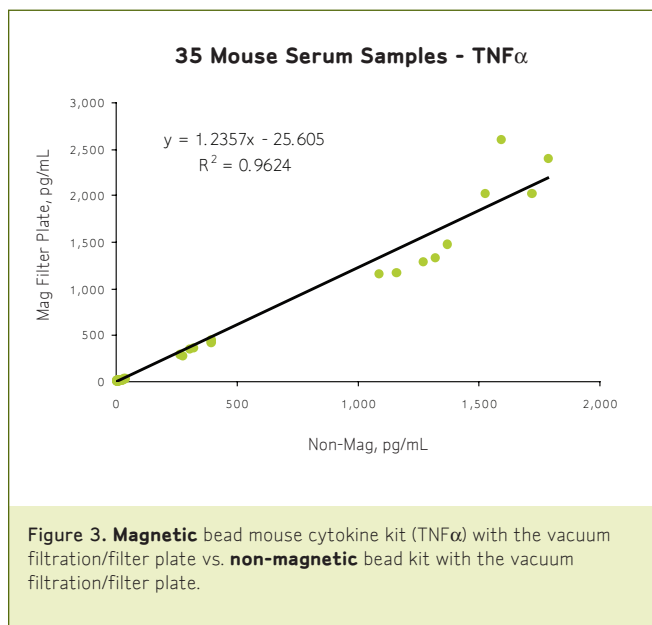
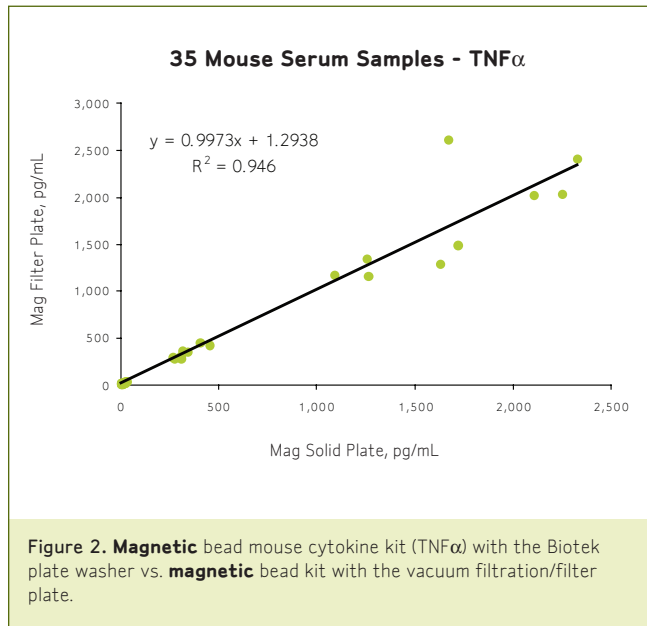
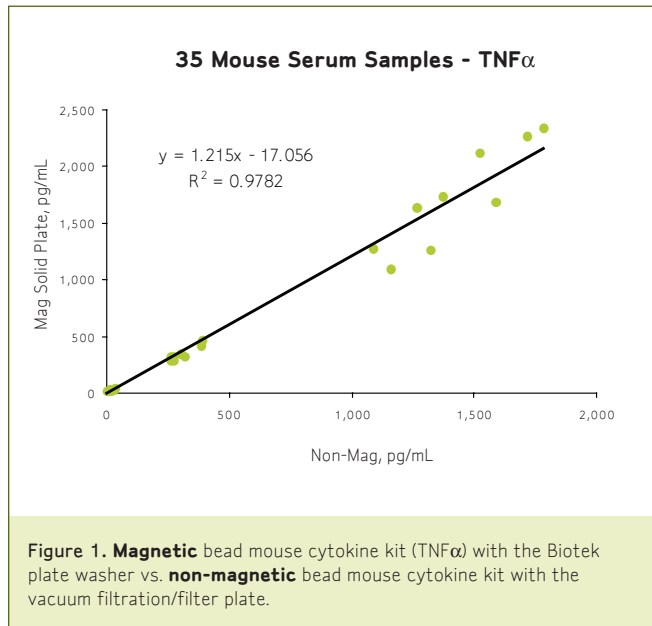


ADVANCING LIFE SCIENCE TOGETHER[®]
Research. Development. Production.

www.millipore.com/mag

CONSISTENT RESULTS

Our studies have shown that MILLIPLEX^{MAG} kits show equivalent performance to MILLIPLEX^{MAP}, so you can be assured that your magnetic bead assay results will be comparable to that of our non-magnetic bead kits!



To help you get started, we recommend:

The ELx405RM plate washer from BioTek.



Visit our website for more information!

www.millipore.com/milliplex_washer

Analytes	KITS						
	Human Cytokine 30-plex	Mouse Cytokine 25-plex	Rat Cytokine 23-plex	Human Metabolic 13-plex	Mouse Metabolic 13-plex	Rat Metabolic 12-plex	Canine Gut Hormone 8-plex
IL-1 α	X	X	X				
IL-1 β	X	X	X				
IL-1RA	X						
IL-2	X	X	X				
IL-3	X						
IL-4	X	X	X				
IL-5	X	X	X				
IL-6	X	X	X	X	X	X	
IL-7	X	X					
IL-8	X						
IL-9		X					
IL-10	X	X	X				
IL-12p40	X	X					
IL-12p70	X	X	X				
IL-13	X	X	X				
IL-15	X	X					
IL-17	X	X	X				
IL-18			X				
Amylin (active) *				X	X	X	
Amylin (total) *				X			X
C-Peptide				X			
C-Peptide 2					X	X	
EGF	X						
Eotaxin	X		X				
G-CSF	X	X	X				
Ghrelin (active)				X	X	X	X
GlIP (total)				X	X	X	X
GLP-1 (active)				X	X	X	X
Glucagon				X	●	●	●
GM-CSF	X	X	X				
GRO/KC		X	X				
IFN- α -2	X						
IFN- γ	X	X	X				
Insulin				X	X	X	X
IP-10	X	X	X				
Leptin			X	X	X	X	X
MCP-1	X	X	X	X	X	X	
MIP-1 α	X	X	X				
MIP-1 β	X	X					
MIP-2		X					
Pancreatic Polypeptide				X	X	X	X
PYY (total)				X	X	X	X
RANTES	X	X	X				
Resistin					X		
TNF- α	X	X	X	X	X	X	
TNF- β	X						
VEGF	X		X				

*Amylin (active) and Amylin (total) cannot be plexed together.

●Coming Soon

See our website for new product launches at www.millipore.com/milliplex

No Luminex machine? No Problem! Let our BioPharma Services lend you a hand!

- Millipore's **BioMarker Services** has been performing immunoassays for over 25 years
- Services available for RIAs, ELISAs, IRMAs and multiplex assays
- Rapid and reliable results
- Quality control, reproducible results, and confidentiality are of paramount importance to our Assay Services team
- Millipore's **Regulatory Compliant Laboratory** is uniquely positioned to provide bioanalytical services to support your preclinical and clinical studies

TO PLACE AN ORDER

Visit millipore.com/milliplex or call
1-800-MILLIPORE

TO RECEIVE TECHNICAL ASSISTANCE

In the **U.S. and Canada**, call toll-free 1-866-441-8400, or 1-636-441-8400.

In **Europe**, please call Customer Service:

- France: 0825.045.645
- Spain: 901.516.645 Option 1
- Germany: 01805.045.645
- Italy: 848.845.645
- English UK: 0870.900.46.45

For other countries across Europe and the world, please visit www.millipore.com/offices

For Technical Service, please visit
www.millipore.com/techservice

MILLIPLIX MAG KITS

Magnetic Bead kit	Plex/Analytes*	Catalog #
Human Cytokine/Chemokine kit	30 Plex	HCYTMAG-60K
Human Cytokine/Chemokine kit	Pre-mixed 29 Plex	HCYTMAG-60K-PX29
Human Cytokine/Chemokine kit	Pre-mixed 30 Plex	HCYTMAG-60K-PX30
Mouse Cytokine/Chemokine kit	25 Plex	MCYTMAG-70K
Mouse Cytokine/Chemokine kit	Pre-mixed 25 Plex	MCYTMAG-70K-PMX
Rat Cytokine/Chemokine kit	23 Plex	RCYTMAG-80K
Rat Cytokine/Chemokine kit	Pre-mixed 23 Plex	RCYTMAG-80K-PMX
Human Metabolic Disease kit	13 Plex	HMHMAG-34K
Mouse Metabolic Disease kit	13 Plex	MMHMAG-44K
Rat Metabolic Disease kit	12 Plex	RMHMAG-84K
Canine Gut Hormone Kit	8 Plex	CGTMAG-98K

*Select a pre-mixed kit or choose only the analytes within a kit that meet your multiplexing needs.



www.millipore.com/offices

ADVANCING LIFE SCIENCE TOGETHER®
Research. Development. Production.

Millipore, MILLIPLIX and Advanced Life Science Together are registered trademarks of Millipore Corporation.

The M mark is a trademark of Millipore Corporation.

Luminex and xMAP are registered trademarks of Luminex Corporation. Printed in U.S.A.
Lit. No. PF2923EN00 09LS011 LS-SBU-09-02595 12/09

© 2009 Millipore Corporation, Billerica, MA 01821 U.S.A. All rights reserved.