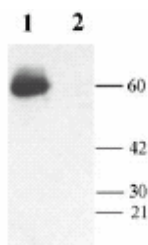


RABBIT ANTI-SK3 AFFINITY PURIFIED POLYCLONAL ANTIBODY

CATALOG NUMBER:	AB5350-50UL
LOT NUMBER:	
QUANTITY:	50 μ L
CONCENTRATION:	0.6 mg/mL (after reconstitution)
SPECIFICITY:	Recognizes SK3 (KCa3, Kcnn3, SKCa3). The epitope specific for SK3 is not present in any other known proteins.
IMMUNOGEN:	Highly purified peptide corresponding to residues 2-21 of human SK3 (Accession Q9UG16).
APPLICATIONS:	Western blotting: 1:200 using ECL on rat brain membranes. Immunohistochemistry on rat brain sections. Dilutions should be made using a carrier protein such as BSA (1-3%). Optimal working dilutions must be determined by the end user.
CONTROL ANTIGEN:	Included free of charge with the antibody is 40 μ g of control antigen (lyophilized powder). Reconstitute with 100 μ L of sterile distilled water. For negative control, preincubate 1 μ g of purified peptide with 1 μ g of antibody for one hour at room temperature. Optimal concentrations must be determined by the end user.
SPECIES REACTIVITIES:	Human and rat. Reactivity with other species has not yet been tested.
FORMAT:	Affinity purified immunoglobulin.
PRESENTATION:	Lyophilized from PBS, pH 7.4, containing 1% BSA and 0.025% sodium azide. Reconstitute with 50 μ L of sterile distilled water. Centrifuge antibody preparation before use (10,000 x g for 5 min).
STORAGE/HANDLING:	Maintain lyophilized material at -20°C for up to 6 months after date of receipt. After reconstitution maintain at -20°C in undiluted aliquots for up to 6 months. Avoid repeated freeze/thaw cycles.

SUGGESTED WESTERN BLOT PROTOCOL

1. Mix the samples (organ membranes: 50 µg/lane; transfected cells: 500,000 cells/lane) with sample-buffer X 2, and heat 10 min at 70°C.
2. 5-50 µL applied to Minigel lane (0.75-1.5 mm width) and run at standard conditions. (60 mA for 2 1.5 mm Minigel gels, 1.4 h). It is suggested that you run 5-15% acrylamide (37.5:1 acrylamide:bisacrylamide) minigel (1.5 mm width) at 30 mA/gel ~1-1.5 hours.
3. Transfer in semi-dry system under standard conditions (3 h 100 mA for two minigel gels)
4. Stain the transferred bands with Chemicon BLOT-*FastStain* (Catalog Number 2076).
5. Destain with deionized water.
6. Block with 5% non-fat milk (Marvel or Carnation) in PBS, and 0.025 % sodium azide, overnight at 2-8°C. The non-fat milk should be dissolved freshly, centrifuged 10,000 rpm for 10 min, and filtered through glass filter (Gelman Acrodisc).
7. Incubation with first antibody 2 h at room temperature or overnight at 4°C in blocking solution. The antibody preparation should be centrifuged before use (10,000 g 5 min.). Optimal working dilutions and incubation time will need to be determined by the end user.
8. Wash 4 x 10 min. with PBS-0.1% tween 20. From this stage, azide should be omitted.
9. Incubation with the secondary antibody (HRP-conjugated goat anti-rabbit antibody, for example Chemicon Catalog Number AP132P, diluted appropriately) 1 h at room temperature.
10. Wash 4 x 10 min. with PBS-0.1% tween 20.
11. Perform ECL with commercial kits (Chemilucifer, Chemicon Catalog Number 2600).

**Western blotting of total rat brain membrane proteins**

1. AB5350 1:200
2. AB5350 preincubated with control peptide.

For research use only; not for use as a diagnostic.

Unless otherwise stated in our catalog or other company documentation accompanying the product(s), our products are intended for research use only and are not to be used for any other purpose, which includes but is not limited to, unauthorized commercial uses, in vitro diagnostic uses, ex vivo or in vivo therapeutic uses or any type of consumption or application to humans or animals.

©2008: Millipore Corporation. All rights reserved. No part of these works may be reproduced in any form without permission in writing.

USA & Canada • Phone: +1(800) 437-7500 • Fax: +1 (951) 676-9209 • Europe +44 (0) 23 8026 2233
Australia +61 3 9839 2000
www.millipore.com

12-27-2005/AB5350-50UL/CB
/05/20/08/ft