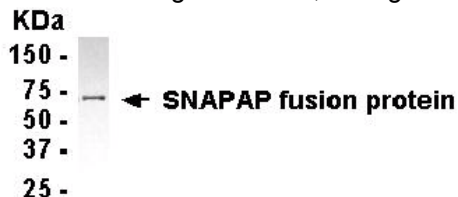


**CHICKEN ANTI-SNAPAP
AFFINITY PURIFIED
POLYCLONAL ANTIBODY**

CATALOG NUMBER: AB9176
LOT NUMBER:
QUANTITY: 100 µg
CONCENTRATION: 1 mg/mL
SPECIFICITY: SNAPAP (SNARE associated protein snapin, SNAP-associated protein).
IMMUNOGEN: Fusion protein from human SNAPAP.
APPLICATIONS: Western blotting: 1:500-1:2,000 against SNAPAP fusion protein.



It is expected that the antibody will work for immunocytochemistry and immunohistochemistry. Specific reactivity has not been confirmed.

Optimal working dilutions must be determined by the end user.

SPECIES REACTIVITY: Human. Other species have not been tested. It is expected that the antibody will also react with rat and mouse.
FORMAT: Affinity purified chicken IgY.
PRESENTATION: Liquid in PBS.
STORAGE/HANDLING: Maintain at -20°C in undiluted aliquots for up to 6 months after date of receipt. Avoid repeated freeze/thaw cycles.
RELATED REFERENCES: Ilardi, J. M.; Mochida, S.; Sheng, Z.-H. : Snapin: a SNARE-associated protein implicated in synaptic transmission. *Nature Neurosci.* **2**:119-124 (1999).

For research use only; not for use as a diagnostic.

Important Note: During shipment, small volumes of product will occasionally become entrapped in the seal of the product vial. For products with volumes of 200 µL or less, we recommend gently tapping the vial on a hard surface or briefly centrifuging the vial in a tabletop centrifuge to dislodge any liquid in the container's cap.