



THE POWER OF

AUTOMATED WORKFLOW

**GuavaLink™ Automation Server:
Streamline Cell-based Screens with Automated Processing
of Multiple Microplates**

GuavaLink Automation Server

- *Allows for remote control of both the Guava PCA™-96 and PCA-96 AFP Systems*
- *Works with all physically compatible robotic arms and liquid handling workstations*
- *Processes up to 12 microplates at one time, between wash tube changes*
- *Processes different Guava Assays within a microplate series, using predefined Worklists*

Cell-based screening assays have never been easier with the Guava PCA-96 systems, the first benchtop instruments for single-cell analysis and counting in a 96-well format. Now you can integrate your Guava cell-based screens with your laboratory automation using the GuavaLink Automation Server software for more streamlined workflow and enhanced productivity.



Figure 1. The Guava PCA-96 systems work with all physically compatible robotic arms and workstations.

Designed to automate the processing of multiple microplates on the Guava PCA-96 systems, GuavaLink allows your robot scheduling software to control and integrate the Guava Systems with all physically compatible robotic arms or liquid handling workstations. Using a series of user-defined Worklists, the robot scheduling software sends commands to the Guava PCA-96 while instructing the robotic arm to move microplates to and from the Guava PCA-96 system.

The Worklist system flexibility allows you to interchange Guava assays as needed throughout your Worklist series. Guavalink makes the Guava PCA-96 a truly walk-away system, automating hours of microplate processing time with no user intervention.

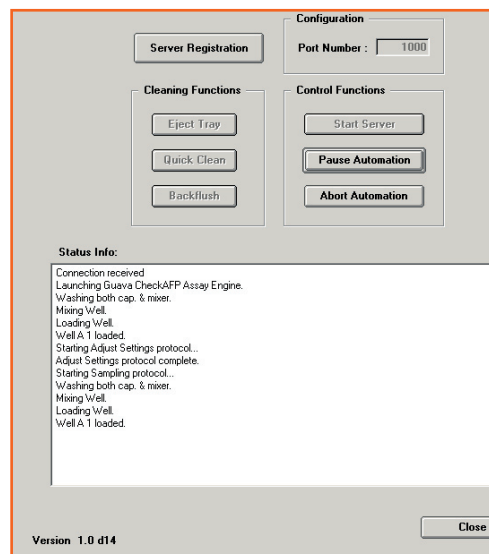


Figure 2. GuavaLink Automation Server software provides both manual and automated control and cleaning functions.

GuavaLink Increases Laboratory and User Productivity (Fig. 2)

- Configurable for remote control of Guava PCA-96 and PCA-96 AFP systems
- Both manual and automated Control Functions: Start Server, Pause Automation and Abort Automation
- Both manual and automated Cleaning Functions: Eject Tray, Quick Clean, Backflush
- Convenient tracking of events in the Status Info box

GuavaLink WorkEdit—Flexible, With User-Defined Protocol Options (Fig. 3)

- Assay Type Selection
- User defined tube and/or well selection
- By row or column acquisition order
- Capillary and Mixer cleaning options
- User defined number of events and replicates
- Automated clog detection with user defined threshold
- Backflush, Quick Clean and Abort options for clogs

Designed for Quick, Easy Interface Development

- ActiveX Wrapper Option
- Demo Client Simulation Software for quick interface testing
- Impeded fields for optional tracking of barcodes

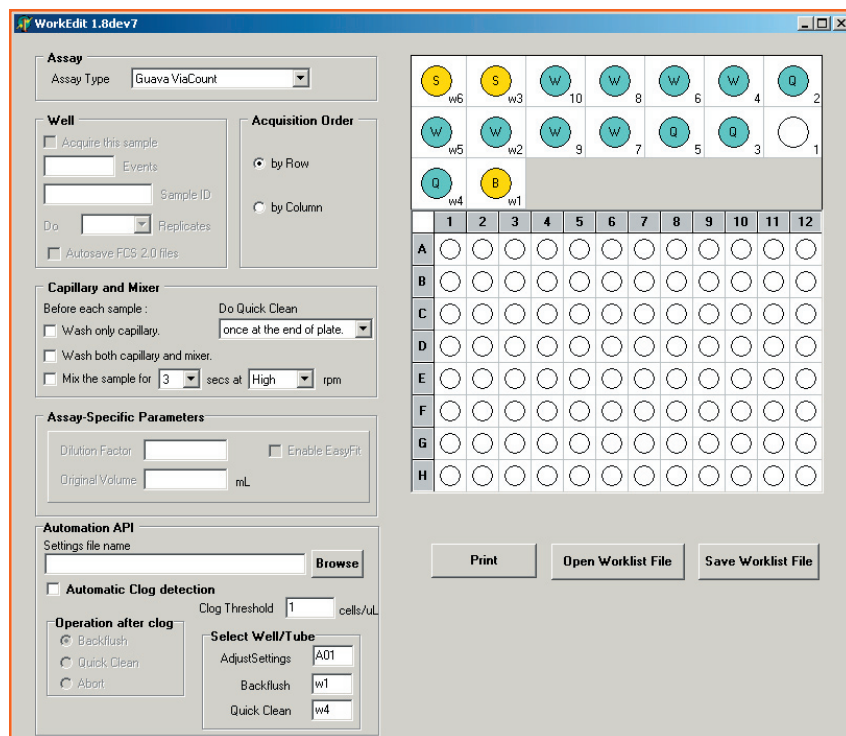


Figure 3. GuavaLink WorkEdit Screen provides flexible, user-defined protocol options.

PRODUCT COMPONENTS

GuavaLink Automation Server Software

Client Demo Simulation Programs

- Active X Component
- Visual Basic Client Demo
- Visual C++ Client Demo

GuavaLink Documentation

- Programmer's Reference Guide
- User's Guide
- Client Demo User's Guide
- Client Demo Source Code
 - Visual Basic Sources
 - Visual C++ Sources

GuavaLink EPROM

ORDERING INFORMATION

GuavaLink Automation Server
Developer's Kit - PCA-96
Cat. No. 0500-0910

GuavaLink Automation Server
Developer's Kit - EasyCyte
Cat. No. 0500-1250

GuavaLink Integration Support
Package (PCA-96 and EasyCyte)
Cat. No. 0500-1260

For pricing, please request a quotation.



USA & World

Guava Technologies, Inc.
25801 Industrial Blvd.
Hayward, CA 94545 USA
Tel: 510.576.1400
Tel: 866.448.2827 (US only)
www.guavatechnologies.com
info@guavatechnologies.com

European Office

Guava Technologies
Guava House
Drope Rd.
St. Georges Super Ely
Cardiff CF5 6EP UK
Tel: +44 1446 760112
Fax: +44 1446 761015
info@guavatechnologies.com

© 2004 Guava Technologies Inc.
All rights reserved. Guava is a
registered trademark of Guava
Technologies, Inc. GuavaLink and
PCA are trademarks of Guava
Technologies, Inc.