

# Anti-Rabbit Light Chain Specific Cy5 Conjugated

Monoclonal Antibody

Cat. # MAB201S

Lot # XXXXXX

pack size: 0.5 mg

Store at 2-8°C  
DO NOT FREEZE

FOR RESEARCH USE ONLY



## Certificate of Analysis

page 1 of 2

Applications	Species Cross-Reactivity	Antibody Isotype	Epitope/Region	Host Species	Molecular Weight	Accession #
WB, ELISA	Rb	IgG	Kappa light chain	M	N/A	N/A

### Background

Antibody molecules typically comprise two immunoglobulin light chains covalently bound to a pair of heavy chains. Immunoglobulin light chains occur in two types, designated by the Greek letters kappa and lambda. Kappa and gamma light chains are approximately 250 amino acids in length with an average mass of about 25 kDa. The ratio of kappa to lambda found in the immunoglobulin population varies by species.

### Presentation

Isolated from ascites by chromatographic procedures. Lyophilized.

### Specificity

The antibody reacts strongly with native primary antibodies primarily with kappa light chains. It is not suitable for detecting lambda light chains. The antibody does not react with the heavy chain of rabbit IgG. The antibody has been tested by ELISA and adsorbed to ensure minimal cross-reaction with bovine, goat, Armenian hamster, horse, human, mouse, rat, and sheep immunoglobulins.

### Species Cross-reactivity

Reacts with rabbit IgG light chains primarily with kappa light chains. Minimal cross-reaction with bovine, goat, Armenian hamster, horse, human, mouse, rat, and sheep. Reactivity with other species has not been determined.

### Immunogen

Prepared from rabbit IgG light chain.

### Storage and Handling

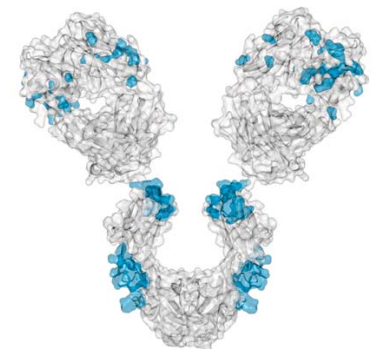
Maintain lyophilized product at 2°-8°C for up to 12 months. After reconstitution the product is stable for six weeks at 2°-8°C in the dark as an undiluted liquid. Reconstitute vial with of distilled water (addition of 0.5 ml water will yield a final concentration of 1 mg/mL). For extended storage after reconstitution, add an equal volume of glycerol to make a final concentration of 50% glycerol followed by storage at -20°C in undiluted aliquots for up to 12 months. Please note the concentration of protein (and buffer salts) will decrease to one-half of the original after the addition of glycerol. Avoid repeated freeze thaw cycles. Keep away from light.

### Quality Control Testing

Western Blotting: 1:100 -1:800

ELISA: 1:100 -1:800

*Optimal working dilutions must be determined by the end user.*



**APPLICATION LEGEND:** WB Western Blotting IP Immunoprecipitation IC Immunocytochemistry IF Immunofluorescence  
IH Immunohistochemistry (Tissue)

**SPECIES LEGEND:** H Human M Mouse R Rat Rb Rabbit WR Most Common Vertebrates ( ) Predicted Reactivity

**Please visit [www.millipore.com](http://www.millipore.com) for additional product information, test data and references.**

Submit your published journal article, and earn credit toward future Millipore purchases. Visit [www.millipore.com/publicationrewards](http://www.millipore.com/publicationrewards) to learn more!

upstate | CHEMICON | Linco

THE EXPERTISE OF UPSTATE®, CHEMICON® AND LINCO®  
IS NOW A PART OF MILLIPORE

**RELATED PRODUCTS (specific)**

**cat #                    description**

**RELATED PRODUCTS (non-specific)**

<b>cat #</b>	<b>description</b>
WBAVDBASE	■ SNAP i.d. Protein Detection System
WBAVDABTR	■ SNAP i.d. Antibody Collection Tray
WBAVDROLL	■ SNAP i.d. Blot Roller
WBAVDBH03	■ SNAP i.d. Triple Well Blot Holder
WBAVDBH01	■ SNAP i.d. Single Well Blot Holder
WBAVDBH02	■ SNAP i.d. Double Well Blot Holder
IPVH00010	■ Immobilon-P 26.5 cm x 3.75 m Roll PVDF 0.45 µm
IPFL00010	■ Immobilon-FL 26.5 cm x 3.75 m Roll PVDF 0.45 µm
IPVH07850	■ Immobilon-P 7 x 8.4 cm PVDF 0.45 mm (sheet) 50/pk
ISEQ00010	■ Immobilon-P SQ 26.5 cm x 3.75 m 1 roll PVDF 0.2 µm
ISEQ07850	■ Immobilon-P 7 x 8.4 cm PVDF 0.2 mm (sheet) 50/pk
IPFL07810	■ Immobilon-FL 7 x 8.4 cm PVDF 0.45 mm (sheet) 10/pk
WBKLS0100	■ Immobilon Western Chemilum HRP Substrate 100 mL
17-373	■ Spray & Glow™ ECL WB Detection System 1 ea
2060	■ Re-Blot Western Blot Recycling Kit
2500	■ Re-Blot Plus Western Blot Recycling Kit
B2080-175GM	■ Blot Quick Blocker Membrane Blocking Agent 175G

■ antibodies ■ Multiplex products ■ biotools ■ cell culture ■ enzymes ■ kits ■ proteins/peptides ■ siRNA/cDNA products

**Please visit [www.millipore.com](http://www.millipore.com) for additional product information, test data and references**

28820 Single Oak Drive • Temecula, CA 92590

Technical Support: T: 1-800-MILLIPORE (1-800-645-5476) • F: 1-800-437-7502

**FOR RESEARCH USE ONLY.** Not for use in diagnostic or therapeutic applications. Not for human or animal consumption. Purchase of this Product does not include any right to resell or transfer, either as a stand-alone product or as a component of another product. Any use of this Product for purposes other than research is strictly prohibited without prior written authorization from an authorized officer of Millipore Corporation.

Upstate®, Chemicon®, Linco® and all other trademarks are owned by Millipore Corporation. Copyright ©2008-2009 Millipore Corporation. All rights reserved.



We Buy 100% Certified Renewable Energy