

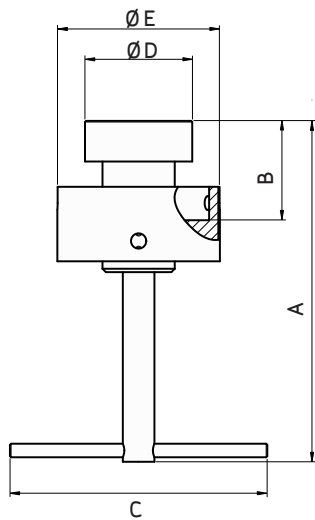
NovAseptic® MIXER, ATTRACTOR, GMP, USM MIXING HEAD AND HS ROTOR

PRODUCT DESCRIPTION

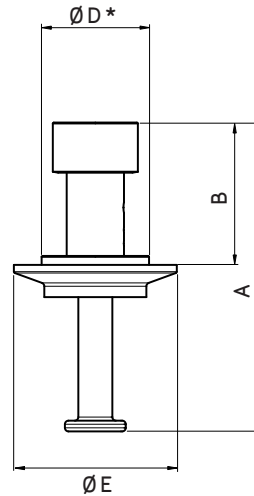
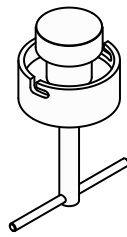
The NovAseptic mixers offer a complete solution for mixing throughout the process line and are designed for a wide variety of mixing applications in the pharmaceutical and biotechnology industries.

Catalogue Numbers:

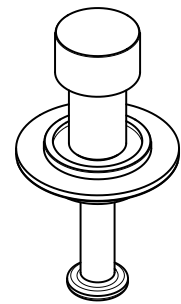
GT#/AW



GT05/AW, GT1/AW, GT5/AW, GT10/AW



GT60/AW



Nominal Dimensions in mm (in.)

Catalogue Number	Compatible with Mixer*	A	B	C	D	D*	E
GT05/AW	GMP50, GMP50 ATEX, HS T10	138 (5.43)	39 (1.54)	114 (4.49)	27 (1.06)	-	54 (2.13)
GT1/AW	GMP100 & GMP100 ATEX	151 (5.94)	44 (1.73)	114 (4.49)	47 (1.85)	-	72 (2.83)
GT5/AW	GMP500 & GMP500 ATEX	161 (6.34)	45 (1.77)	114 (4.49)	47 (1.85)	-	72 (2.83)
GT10/AW	GMP1000 & GMP1000 ATEX	175 (6.89)	55 (2.17)	117 (4.61)	55 (2.17)	-	125 (4.92)
GT60/AW	HST60, USM T60	172.5 (6.79)	79.5 (3.13)	-	-	60 (2.36)	91 (3.58)

Specifications

Net Weight (approximate)

Valve Body	GT05/AW	GT1/AW	GT5/AW	GT10/AW	GT60/AW
Weight kg (lb)	0.5 (1.1)	0.9 (2.0)	1.1 (2.43)	1.4 (3.09)	1.5 (3.3)

Material

Material Code	Stainless Steel
---------------	-----------------

Additional Information

Packaging	The Attractor, GMP, USM Mixing Head and HS Rotor, is packaged in a closed box.
Quality Control	Millipore Quality Assurance System guarantees the control at all stages of the manufacturing.



www.millipore.com/offices

Millipore and NovAseptic are registered trademarks of Millipore Corporation.
Advancing Life Science Together and M logo are trademarks of Millipore Corporation.
Specifications subject to change without notice.
Lit. No. SP1178EN00 Rev. B 05/2008.
© 2008 Millipore Corporation. All rights reserved.

ADVANCING LIFE SCIENCE TOGETHER™
Research. Development. Production.