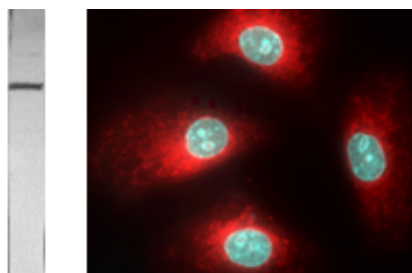


**CHICKEN ANTI-CALRETICULIN
AFFINITY PURIFIED
POLYCLONAL ANTIBODY**

CATALOG NUMBER:	AB3409
LOT NUMBER:	
QUANTITY:	100 µg
CONCENTRATION:	1 mg/mL
SPECIFICITY:	Calreticulin
IMMUNOGEN:	Human calreticulin, amino acids 353-416.
APPLICATIONS:	Western blot: 1:500-1:2,000 (colormetric) Immunocytochemistry: 1:100-1:200



Staining of endogenous calreticulin in NRK cells.
It is expected that the antibody will also work for immunohistochemistry. Specific reactivity has not been confirmed.
Optimal working dilutions must be determined by the end user.

SPECIES REACTIVITY:	Human, rat, rabbit, mouse and bovine.
FORMAT:	Affinity purified immunoglobulin.
PRESENTATION:	Liquid in PBS.
STORAGE/HANDLING:	Maintain at -20°C in undiluted aliquots up to 6 months after date of receipt. Avoid repeated freeze/thaw cycles.

MILLIPORE

CHEMICON

now part of Millipore

**BACKGROUND
REFERENCE:**

Coppolino, MG, et al., *Int. J. Biochem Cell Biol* (1998) **30**:553-558.

Important Note:

During shipment, small volumes of product will occasionally become entrapped in the seal of the product vial. For products with volumes of 200 μ L or less, we recommend gently tapping the vial on a hard surface or briefly centrifuging the vial in a tabletop centrifuge to dislodge any liquid in the container's cap.

Now Available - Chicken IgY Negative Control Antibody (Cat. No. PP25),
Chicken IgY Blocking Solution (Cat. No. 2180) and Chicken IgY Precipitating Agarose
(Cat. No. 2185)

For research use only; not for use as a diagnostic.

Unless otherwise stated in our catalog or other company documentation accompanying the product(s), our products are intended for research use only and are not to be used for any other purpose, which includes but is not limited to, unauthorized commercial uses, in vitro diagnostic uses, ex vivo or in vivo therapeutic uses or any type of consumption or application to humans or animals.

©2007: Millipore Corporation. All rights reserved. No part of these works may be reproduced in any form without permission in writing.

USA & Canada • Phone: +1(800) 437-7500 • Fax: +1 (951) 676-9209 • Europe +44 (0) 23 8026 2233
Australia +61 3 9839 2000
www.millipore.com

10-15-2004/AB3409/CB
/12/19/07/ft