

## MOUSE ANTI-SECRETAGOGIN MONOCLONAL ANTIBODY

**CATALOG NUMBER:** MAB5622

**LOT NUMBER:**

**QUANTITY:** 100 µg

**CONCENTRATION:** 1 mg/mL

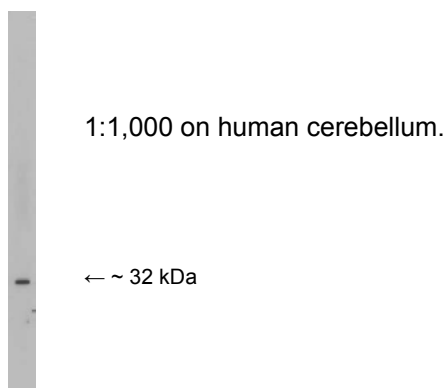
**SPECIFICITY:** Secretagogin. The monoclonal recognizes a 32 kDa protein on immunoblot analysis of neuroendocrine tumor cells and human cerebellum. By immunohistochemistry it reacts with normal pancreatic beta-cells and tumors such as vipoma, gastrinoma and carcinoid. No reactivity seen by immunohistochemistry on exocrine pancreatic tissue.

**IMMUNOGEN:** Human insulinoma.

**ISOTYPE:** IgG

**CLONE:** D24

**APPLICATIONS:** Western blot: 1:500-1:1,000



Immunohistochemistry on human brain tissue fixed in acetone.  
Optimal working dilutions must be determined by end user.

**SPECIES REACTIVITY:** Human. No reactivity with rodent beta cells or a canine insulinoma. Other species have not yet been tested.

**FORMAT:** Purified immunoglobulin

**PRESENTATION:** Liquid in PBS with 0.1% sodium azide

**STORAGE/HANDLING:** Maintain -2-8°C in undiluted aliquots for up to 6 months after date of receipt.

**REFERENCE:** Wagner, L., et al., *Journal Endocrinology*. (1998) **156**:469-476.  
Wagner, L., et al., *Journal of Biological Chemistry*. (2000) **275**:24740-24751.  
Gartner, W., et al., *Cerebral Cortex*. (2001) **11**:1161-1169.

*For research use only; not for use as a diagnostic.*

*Important Note: During shipment, small volumes of product will occasionally become entrapped in the seal of the product vial. For products with volumes of 200  $\mu$ L or less, we recommend gently tapping the vial on a hard surface or briefly centrifuging the vial in a tabletop centrifuge to dislodge any liquid in the container's cap.*

*For research use only; not for use as a diagnostic.*

© 2007: CHEMICON International, Inc. - By CHEMICON International, Inc. All rights reserved. No part of these works may be reproduced in any form without permissions in writing.

---

USA & Canada • Phone: +1(800) 437-7500 • Fax: +1 (951) 676-9209 • Europe +44 (0) 23 8026 2233  
Australia +61 3 9839 2000 • Germany +49-6192-207300 • ISO Registered worldwide  
[www.chemicon.com](http://www.chemicon.com) • [custserv@chemicon.com](mailto:custserv@chemicon.com) • [techserv@chemicon.com](mailto:techserv@chemicon.com)