

Specification Sheet

Series 3000 Japanese Version T-Line Single-Round Housing

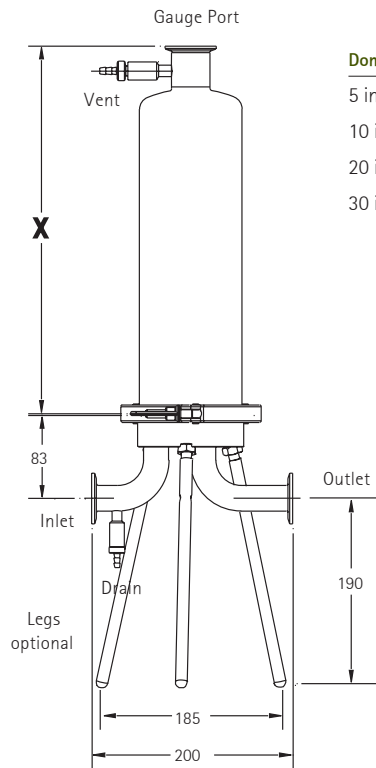


Specifications

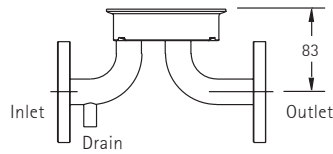
CE Pressure Equipment	Japanese ISO® and JIS compatible housings have been designed and manufactured according to the essential requirements of the European Pressure Equipment Directive 97/23/EC. Series 3000 30-inch T-line housings are CE marked.
CFR Compliance	The sealing materials supplied comply with the Title 21 Code of Federal Regulations, section 177.2600 for rubber compounds or 177.1550 for fluorocarbon resin, 177.1520 for olefin polymers.
USP Class VI Compliance	All seal materials comply USP <88> Biological Reactivity Tests for Class VI plastics.
Operating Conditions Range:	(>970 kPa), 9.7 bar (133 psig) at 25 °C (77 °F) (700 kPa) 7 bar (100 psig) at 60 °C (140 °F) (600 kPa) 6 bar (87 psig) at 80 °C (176 °F) (320 kPa) 3.2 bar (46 psig) at 145 °C (293 °F)
Materials of Construction (Wetted Parts) All metal surfaces in contact with the product: Plunger valve seal tip: Diaphragm valve membrane: Gasket and plunger valve seal: Optional gasket materials:	316L (DIN 1.4404 and DIN 1.4435) stainless steel PTFE EPDM Silicone EPDM, PTFE encapsulated fluoroelastomer
Surface Finish	2 Finishes: Electropolished and Mechanical Polish
Electropolished (EP)	All stainless steel wetted parts are electropolished Ra 0.5 µm internal, Ra 0.8 µm external.
Mechanical Polish (MP)	All stainless steel wetted parts are mechanically polished Ra 0.5 µm internal, Ra 0.8 µm external.
Connections Gauge Port: Inlet/Outlet:	Ferrule (ISO 1S) Ferrule (ISO 1S) Flange (JIS 20A or 25A)
Cartridge Code	Code 7 (Wire form), Code 0, Code F
Clamp	4 in. Ferrule, 3-piece 304 (DIN 1.4301) stainless steel clamp

T-Line Housing Dimensions

Base Options



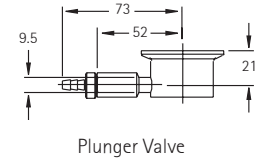
Dome Size	X (mm)
5 in.	239
10 in.	366
20 in.	620
30 in.	861



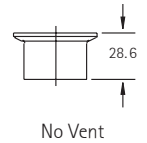
T-line Base with Flange Inlet and Outlet Connections

T-line Housing with Ferrule Inlet and Outlet Connections

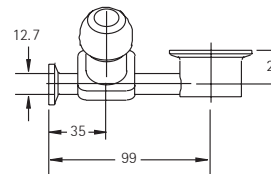
Vent and Drain Options



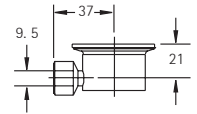
Plunger Valve



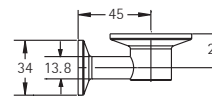
No Vent



Gemü Diaphragm Valve

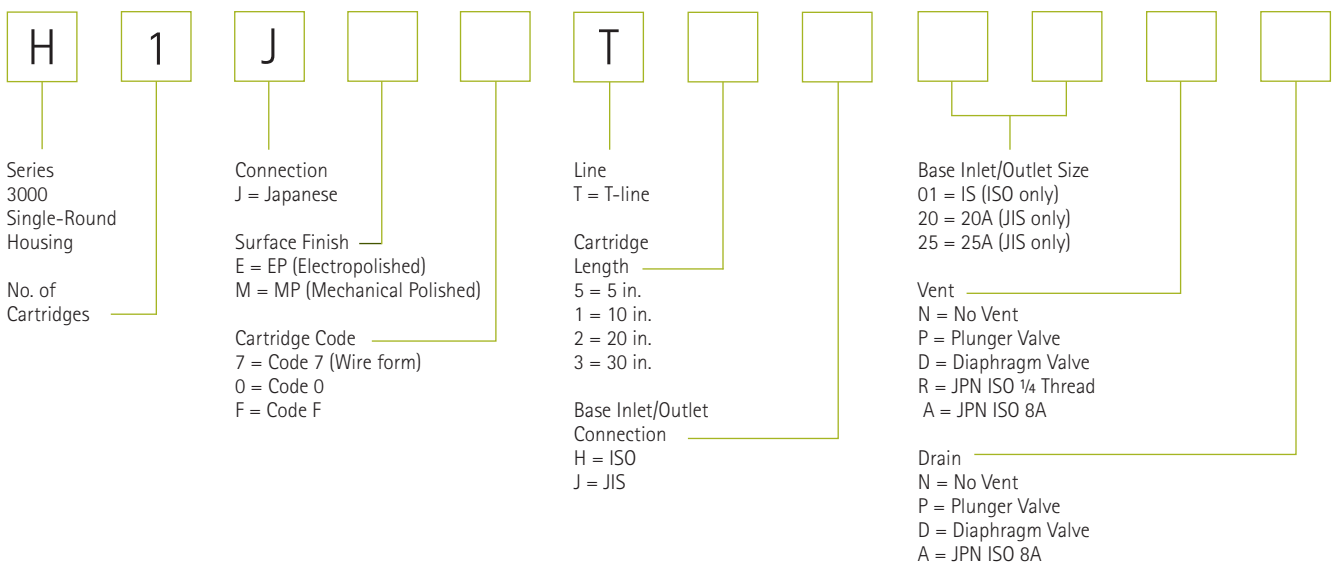


JPN ISO Rc1/4



JPN ISO 8A

Catalogue No. Structure



Ordering Information

Accessories

Description	Qty/Pk	Catalogue No.
Legs, 304 stainless steel	3	H1S3LEG3
Pressure gauge, kPa + Bar type (0–1, 100 kPa, 0–11 Bar)	1	P90005
Pressure gauge, psi _ Bar type (0–160 psi, 0–11 Bar)	1	P90001

Spare Parts

Valves		
Description	Qty/Pk	Catalogue No.
Plunger valve stem	2	H1PVSTEM2
Sanitary vent/drain valve seal kit with silicone O-rings and virgin PTFE sealing tips	10	HGPVSOKIT
Sanitary vent/drain valve seal kit with fluoroelastomer O-rings and virgin PTFE sealing tips	10	HGPVVOKIT
Sanitary vent/drain valve seal kit with EPDM O-rings and virgin PTFE sealing tips	10	HGPVEPKIT
Diaphragm for diaphragm valve	2	H1DVDEP02
Diaphragm valve kit (bolts and washers)	1	H1DVBWKIT

Gaskets

Silicone is the standard gasket material. EPDM is optional and must be ordered separately.

Description	Size/Fits	Silicone	EPDM	PTFE encapsulated fluoroelastomer
Ferrule Connections, 10/pk	4 in.	HGTC400SP	HGTC400EP	HGTC400T0
	¾ in.	HGTC075SP	HGTC075EP	
	ISO 1S	HGIS0100SS10	HGIS0100SE10	
	ISO 1.5S	HGIS0150SS10	HGIS0150SE10	
	ISO 8A	HGIS0008AS10	HGIS0008AE10	
Flange Connections, 10/pk	JIS 20 JP	HGJIS020AS10	HGJIS020AE10	
	JIS 25 JP	HGJIS025AS10	HGJIS025AE10	
	JIS 40 JP	HGJIS040AS10	HGJIS040AE10	

End Caps

All end caps are 316L (DIN 1.4404 and 1.4435) stainless steel.

Description	Size/Fits	Qty/Pk	Catalogue No.
Ferrule Connections	¾ in. and ½ in.	2	HPLG00075IN2
	ISO 8A	2	HPLG03400MM2
	ISO 1S/1.5S	2	HPLG00150IN2

Clamps

All clamps are 304 (DIN 1.4301) stainless steel.

Description	Size/Fits	Qty/Pk	Catalogue No.
Ferrule Connections	¾ in.	2	HCLMP0075IN2
	ISO 1S/1.5S	2	HCLMP0150IN2
	4 in. (2 Piece)	1	P35015
	4 in. (3 Piece)	1	P34303
	ISO 8A	2	HCLMP3400M2

Literature for Series 3000 Single-Round Housings

Data Sheet

Series 3000 Single-Round Housings	DS4112EN00
-----------------------------------	------------

Specification Sheets

Version	Line Style	Literature No.
U.S. Version	T-line Housings	SP1002ENUS
	In-line Housings	SP1001ENUS
European Version	T-line Housings	SP1020EN00
	In-line Housings	SP1040EN00
Japanese Version	T-line Housings	SP1050EN00
	In-line Housings	SP1060EN00

To Place an Order or Receive Technical Assistance

In the U.S. and Canada, call toll-free **1-800-645-5476**

For other countries across Europe and the world,
please visit www.millipore.com/offices

For Technical Service, please visit
www.millipore.com/techservice



www.emdmillipore.com