

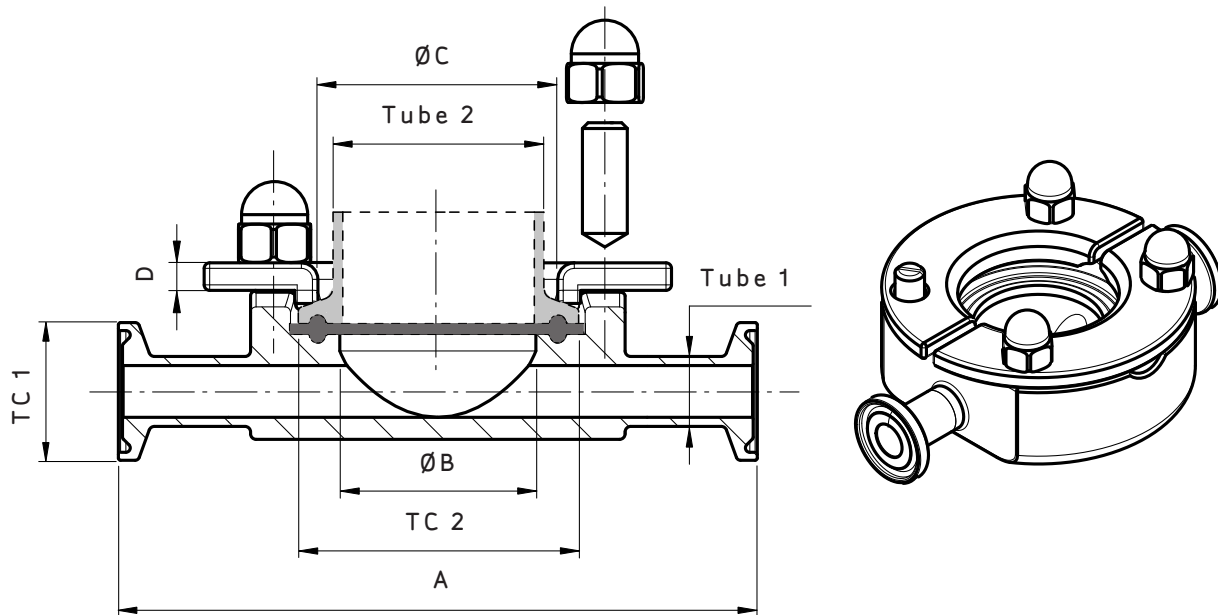
NovAseptic® CONNECTOR, IN-LINE, TC ACCORDING TO TUBE STANDARD DIN 11866 TYPE A

PRODUCT DESCRIPTION

The NovAseptic Connector is designed to meet the requirement of aseptic design. The product is adapted to be used as a connection for pipes, instruments etc.

Catalogue Numbers:

ANS5/#x#-312



Catalogue Number Structure

ANS5 / # x # - 3 1 2
 Connector Model / Size Tube 1 Outer Dimension x Size Tube 1 Inner Dimension - Material Code 3 = EN 1.4435 (316L) Surface Finish 1 = Manually Polished Tube Connection 2 = TC Connetable

Nominal Dimensions in mm (in.)

Catalogue Number	Tube 1*	TC 1	Tube 2**	TC 2	A	B	C	D	Acorn Nut Size	Stud Size
ANS5/130x100-312	13.0 x 1.5 (0.512 x 0.060)	34	38.0 x 1.2 (1.496 x 0.047)	50.5	116.0 (4.567)	35.6 (1.402)	43.8 (1.724)	5.0 (0.197)	M8	M8x20
ANS5/190x160-312	19.0 x 1.5 (0.748 x 0.060)	34	38.0 x 1.2 (1.496 x 0.047)	50.5	116.0 (4.567)	35.6 (1.402)	43.8 (1.724)	5.0 (0.197)	M8	M8x20
ANS5/290x260-312	29.0 x 1.5 (1.142 x 0.060)	50.5	38.0 x 1.2 (1.496 x 0.047)	50.5	116.0 (4.567)	35.6 (1.402)	43.8 (1.724)	5.0 (0.197)	M8	M8x20
ANS5/410x380-312	41.0 x 1.5 (1.614 x 0.060)	50.5	38.0 x 1.2 (1.496 x 0.047)	50.5	116.0 (4.567)	35.6 (1.402)	43.8 (1.724)	5.0 (0.197)	M8	M8x20

*Note: ASTM® (outer diameter x wall thickness)

**Note: SMS 3008 (outer diameter x wall thickness)

Specifications

Net Weight (approximate)				
Valve Body	ANS5/130x100-312	ANS5/190x160-312	ANS5/290x260-312	ANS5/410x380-312
Weight kg (lb)	1.1 (2.43)	1.3 (2.87)	1.6 (3.53)	1.9 (4.19)

Material				
	Connector body Stainless Steel in Compliance with		Tubing Stainless Steel in Compliance with	
Material Code	316L	EN 1.4435	TP316L	EN 1.4435
Technical Requirements	ASME® SA-479	EN 10272	ASTM® SA249	EN 10217-1/EN 10216-5

Material				
	Locking Ring Stainless Steel in Compliance with		Bolt and nut Stainless Steel in Compliance with	
Material Code	316L	EN 1.4404	A193 Gr B8M/ A194 Gr B8M	EN1.4401/ EN 1.4301
Technical Requirements	ASME® SA-479	EN 10272		EN 10269

Additional Information	
Surface Roughness	Internal surface (manually polished) Ra ≤ 0.5µm (20µin)
Design Temperature*	-80 to 200 °C (-112 to 392 °F)
Design Pressure*	-1 to 7 bar(g) (-14.5 to 101 psi(g))
Labeling	Each NovAseptic Connector is marked for full LOT traceability and heat No. according to Millipore QA routines.
Packaging	All open TC ends on the NovAseptic Connector are protected with plastic covers on delivery. The NovAseptic Connector is pre-assembled and packaged in a closed box.
Quality Control	Millipore Quality Assurance System guarantees the control and traceability at all stages of the manufacturing.
In Compliance with	The NovAseptic Connector does comply with the relevant requirements in Annex I, Essential Safety Requirement in PED Directive 97/23/EC. The equipment has been examined with respect to the relevant parts for design examination procedure of conformity assessment as described under the category SEP (Sound Engineering Practice).
Options	For non-standard NovAseptic Connector Options, please contact Millipore for further information.

*Note: The applied gasket (not included) may have different design temperature and/or pressure limits than the NovAseptic Connector. The weakest component in the assembled product determines the maximum design temperature and pressure limits.



www.millipore.com/offices

Millipore and NovAseptic are registered trademarks of Millipore Corporation.
 Advancing Life Science Together and M logo are trademarks of Millipore Corporation.
 ASME is a registered trademark of the American Society of Mechanical Engineers.
 ASTM is a registered trademark of the American Society for Testing and Materials.
 Specifications subject to change without notice.
 Lit. No. SP1235EN00 Rev. - 12/2007.
 © 2008 Millipore Corporation. All rights reserved.

ADVANCING LIFE SCIENCE TOGETHER™
 Research. Development. Production.