

## MOUSE ANTI-RUNX1 MONOCLONAL ANTIBODY

**CATALOG NUMBER:** MAB10062      **QUANTITY:** 100 µg

**LOT NUMBER:**      **CONCENTRATION:**

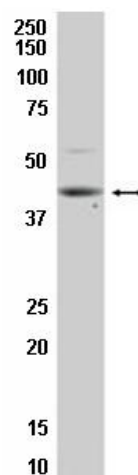
**CLONE NAME:** 2F10      **HOST/ISOTYPE:** IgG

**BACKGROUND:** Core binding factor (CBF) is a heterodimeric transcription factor that binds to the core element of many enhancers and promoters. The protein encoded by this gene represents the alpha subunit of CBF and is thought to be involved in the development of normal hematopoiesis. Chromosomal translocations involving this gene are well-documented and have been associated with several types of leukemia. Two transcript variants encoding different isoforms have been found for this gene.

**IMMUNOGEN:** Recombinant human RUNX1

**APPLICATIONS:** Western Blot Analysis: A 1 µg/mL dilution of the lot detected RUNX1 in lysate from Jurkat cells.

*Optimal working dilutions must be determined by end user.*



**SPECIES REACTIVITY:** Mouse and Rat

**FORMAT:** Supernatant

**PRESENTATION:** Liquid containing 0.1% sodium azide.

**STORAGE/HANDLING:** Maintain at 2-8°C for up to 12 months from date of receipt.

**REFERENCES:** Orozco, Gisela, *et al* (2006). SLC22A4, RUNX1, and SUMO4 polymorphisms are not associated with rheumatoid arthritis: a case-control study in a Spanish population. *J Rheumatol* **33**: 1235-9.

Sauntharajah, Yogen, *et al* (2006). Combinatorial action of RUNX1 and PU.1 in the regulation of hematopoiesis. *Crit Rev Eukaryot Gene Expr* **16**: 183-92.

Miyagawa, Kouji, *et al*. Down-regulation of RUNX1, RUNX3 and CBFbeta in hepatocellular carcinomas in an early stage of hepatocarcinogenesis. *Anticancer Res* **26**: 3633-43.

**Important Note:** During shipment, small volumes of product will occasionally become entrapped in the seal of the product vial. For products with volumes of 200 µL or less, we recommend gently tapping the vial on a hard surface or briefly centrifuging the vial in a tabletop centrifuge to dislodge any liquid in the container's cap.

**For research use only; not for use as a diagnostic.**

Unless otherwise stated in our catalog or other company documentation accompanying the product(s), our products are intended for research use only and are not to be used for any other purpose, which includes but is not limited to, unauthorized commercial uses, in vitro diagnostic uses, ex vivo or in vivo therapeutic uses or any type of consumption or application to humans or animals.

©2008: Millipore Corporation. All rights reserved. No part of these works may be reproduced in any form without permission in writing.