

**RABBIT ANTI-BIM (INTERNAL EPI TOPE) [BOD]
POLYCLONAL ANTIBODY**

CATALOG NUMBER: AB17003

LOT NUMBER:

QUANTITY: 100 µg

SPECIFICITY: Members in the Bcl-2 family are critical regulators of apoptosis by either inhibiting or promoting cell death. Bcl-2 homology 3 (BH3) domain is a potent death domain, and BH3 domain containing pro-apoptotic proteins, including Bad, Bas, Bid, Bik, and Hrk, form a growing subclass of Bcl-2 family. A novel BH3 domain containing protein was recently identified and designated Bim or Bod from human, mouse, and rat (1,2). Bim/BOD interacts with diverse members in the pro-survival Bcl-2 sub-family including Bcl-2, Bcl-x_L and Bcl-w. Bim/BOD induces apoptosis. The messenger RNA of Bim is ubiquitously expressed in multiple tissues and cell lines (1,2).

IMMUNOGEN: Synthetic peptide corresponding to amino acids 22-40 of human origin (1). The sequence is identical to that of mouse and is different by one amino acid from that of rat.

APPLICATIONS: Western blot: 1:1000-1:2000
Human K562 cell lysate can be used as a positive control and a 23 kDa band can be detected.
Optimal working dilutions must be determined by end user.

SPECIES REACTIVITY: Human, mouse and rat. Other species not tested.

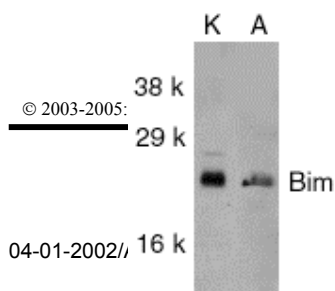
FORMAT: Immunoaffinity chromatography purified immunoglobulin

PRESENTATION: Liquid at 1 mg/mL in PBS containing 0.02% sodium azide.

STORAGE/HANDLING: The undiluted antibody solution is stable for approximately 6 months when stored at 2-8°C.

REFERENCES:
1. O'Connor, L. et al. (1998). *Embo. J.* **17**: 384-395.
2. Hsu, S.Y. et al. (1998). *Mol. Endocrinol.* **12**: 1432-40.

Important Note: *During shipment, small volumes of product will occasionally become entrapped in the seal of the product vial. For products with volumes of 200 µL or less, we recommend gently tapping the vial on a hard surface or briefly centrifuging the vial in a tabletop centrifuge to dislodge any liquid in the container's cap.*



For research use only; not for use as a diagnostic.

Inc. - By CHEMICON International, Inc. All rights reserved. No part of these works may be reproduced in any form without permissions in writing.

USA & Canada • Phone: +1(800) 437-7500 • Fax: +1 (951) 676-9209 • Europe +44 (0) 23 8026 2233
Australia +61 3 9839 2000 • Germany +49-6192-207300 • ISO Registered worldwide
www.chemicon.com • custserv@chemicon.com • techserv@chemicon.com

Western blot analysis of Bim in K562 (K)
and A549 (A) whole cell lysates with
anti-Bim (IN) at 1:1000 dilution.

For research use only; not for use as a diagnostic.

© 2003-2005: CHEMICON International, Inc. - By CHEMICON International, Inc. All rights reserved. No part of these works may be reproduced in any form without permissions in writing.

USA & Canada • Phone: +1(800) 437-7500 • Fax: +1 (951) 676-9209 • Europe +44 (0) 23 8026 2233
Australia +61 3 9839 2000 • Germany +49-6192-207300 • ISO Registered worldwide
www.chemicon.com • custserv@chemicon.com • techserv@chemicon.com