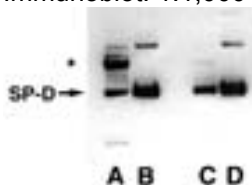


**RABBIT ANTI-MOUSE SURFACTANT PROTEIN D (SP-D)
POLYCLONAL ANTIBODY**

CATALOG NO.: AB3434
LOT NUMBER:
QUANTITY: 100 μ L
SPECIFICITY: Reacts strongly with mouse SP-D.
IMMUNOGEN: Mouse SP-D
APPLICATIONS: Immunoblot: 1:1,000-1:5,000



Rabbit anti-Surfactant Protein D [SP-D] (Catalog Number AB3434) Mouse lavage fluid (10 μ L per lane shown in lanes A and C) and purified mouse SP-D (75 μ g per lane shown in lanes B and D) were subjected to SDS PAGE and transferred to nitrocellulose. The resulting membrane was reacted with pre-absorbed AB3434 (lanes A and B) and with post-absorbed AB3434 (lanes C and D). The 43 kD SP-D is marked with an arrow, and the higher molecular weight contaminate antibody binding protein is marked by an asterisk (*). Absorption of the AB3434 against lung homogenates from SP-D null mice removed all nonspecific reactivity.

ELISA: 1:1,000-1:5,000

Immunohistochemistry on paraffin sections

Optimal dilutions must be determined by the end user.

FORMAT: Rabbit serum.

PRESENTATION: Liquid. Contains no preservative.

STORAGE/HANDLING: Maintain at -20°C in undiluted aliquots for up to twelve months. Avoid repeated freeze/thaw cycles.

REFERENCES:

Ikegami, M. et al. (2005). Surfactant protein D influences surfactant ultrastructure and uptake by alveolar type II cells. *Am. J. Physiol. Lung Cell. Mol. Physiol.* **288**:L552-L561.

Hirche, T. O. et al. (2004). Neutrophil Serine Proteinases Inactivate Surfactant Protein D by Cleaving within a Conserved Subregion of the Carbohydrate Recognition Domain. *J. Biol. Chem.* **279**(26):27688-27698.

Noah, T. L. et al. (2003). Bronchoalveolar Lavage Fluid Surfactant Protein-A and Surfactant Protein-D Are Inversely Related to Inflammation in Early Cystic Fibrosis. *Am. J. Resp. Crit. Care Med.* **168**:685-691.

Stahlman, et al. (2002). Immunolocalization of surfactant protein-D (SP-D) in human fetal, newborn, and adult tissues. *J. Histochem. Cytochem.* **50**(5):651-660.

Important Note: *During shipment, small volumes of product will occasionally become entrapped in the seal of the product vial. For products with volumes of 200 μ L or less, we recommend gently tapping the vial on a flat surface. For research use only; not for use as a diagnostic.*

© 2002-2004: CHEMICON International, Inc. - By CHEMICON International, Inc. All rights reserved. No part of these works may be reproduced in any form without permissions in writing.

hard surface or briefly centrifuging the vial in a tabletop centrifuge to dislodge any liquid in the container's cap.

For research use only; not for use as a diagnostic.

For research use only; not for use as a diagnostic.

© 2002-2004: CHEMICON International, Inc. - By CHEMICON International, Inc. All rights reserved. No part of these works may be reproduced in any form without permissions in writing.

USA & Canada • Phone: +1(800) 437-7500 • Fax: +1 (951) 676-9209 • Europe +44 (0) 23 8026 2233
Australia +61 3 9839 2000 • Germany +49-6192-207300 • ISO Registered worldwide
www.chemicon.com • custserv@chemicon.com • techserv@chemicon.com