

**RABBIT ANTI-SUPEROXIDE DISMUTASE 1 (SOD1)
HUMAN SPECIFIC
POLYCLONAL ANTIBODY**

CATALOG NUMBER: AB5480

LOT NUMBER:

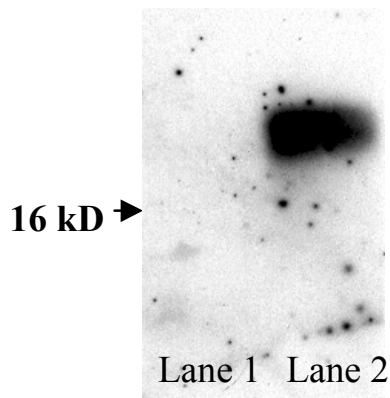
QUANTITY: 50 µL

SPECIFICITY: Superoxide Dismutase 1 (SOD1), human specific.

BACKGROUND: Mutations in the copper/ zinc superoxide dismutase (SOD1) gene are associated with 15-20% of the familial forms of motoneuron disease. This 153 amino acid metalloenzyme is expressed in virtually all cells of all organisms above bacteria and is highly conserved across species, although some minor variations do occur. The incorporation of the mutated form of the SOD1 human gene into a transgenic mouse leads to the onset of the disease that closely resembles the human condition. These animals become weak at about 2-4 months of age and rapidly lose function, which results in death 4- 6 weeks later.

IMMUNOGEN: Synthetic peptide corresponding to amino acids 25-37 of human SOD1.

APPLICATIONS: Western blotting: 1:500



SOD1 Immunoreactivity: Lane 1 mouse brain tissue extracts immunoblotted with AB5480 (1:500). Lane 2 human jurkat T cells extracts immunoblotted with AB5480 (1:500).

Optimal working dilutions must be determined by end user.

SPECIES REACTIVITIES: Human. No reactivity to mouse SOD1.

FORMAT: Rabbit serum.

PRESENTATION: Lyophilized. Contains no preservative. Reconstitute with 50 µL of sterile water.

STORAGE/HANDLING: Maintain lyophilized material at -20°C or -70°C (dry) for up to 12 months after date of receipt. After reconstitution maintain frozen at -20°C in undiluted aliquots for up to 6 months. Avoid repeated freeze/thaw cycles. Glycerol (ACS grade or better) can be added (1:1) for additional stability.

REFERENCES: Bartlett et al. *J. Neuroscience Methods* (2000) **98**:63-67.
Kiaei, M., et al., *J. Neuroscience* (2004) **24**:7945-7950.

For research use only; not for use as a diagnostic.

Unless otherwise stated in our catalog or other company documentation accompanying the product(s), our products are intended for research use only and are not to be used for any other purpose, which includes but is not limited to, unauthorized commercial uses, in vitro diagnostic uses, ex vivo or in vivo therapeutic uses or any type of consumption or application to humans or animals.