



PureProteome™ Protein A and Protein G Magnetic Beads

User Guide

Introduction

The Fc portion of a variety of immunoglobulins (Ig) is known to bind to several bacterial proteins, including Protein A from *Staphylococcus aureus* and Protein G, which is produced by various *Streptococcus* species. The binding affinities of immunoglobulins for Protein A and Protein G vary depending on both the species used to generate the antibody, as well as the antibody's isotype (see Table 1 for details). Both Protein A and Protein G can be extremely useful research tools for applications involving antibodies.

PureProteome Protein A and Protein G Magnetic Beads further enhance the utility of Protein A and Protein G by covalently coupling these reagents to paramagnetic affinity media (i.e., magnetic beads). These beads provide users with a bench-top platform for the rapid, reproducible separation of immunoglobulins from complex mixtures such as serum samples, tissue culture supernatants, and cellular lysates. To achieve separation, samples are mixed with PureProteome Protein A or Protein G Magnetic Beads for a short period of time to bind the immunoglobulins. The beads are then isolated using a magnetic rack, followed by several wash steps to remove unbound proteins. Finally, the bound proteins are eluted at high purity. This magnetic system is a convenient format for serum depletion, immunoprecipitation, or other applications that employ Protein A or Protein G.

Materials Required to Use PureProteome Protein A and Protein G Magnetic Beads

For optimal performance, the Millipore Magna GrIP™ Rack (Cat. no. 20-400) is recommended for use with PureProteome Protein A and Protein G Magnetic Beads.

Application Guidelines

Immunoglobulin Depletion from Serum Samples

Proteomic analysis of complex biological samples such as serum or plasma is hindered by the presence of highly abundant proteins, including immunoglobulins and albumin. The high binding capacity of the PureProteome Protein A and Protein G Magnetic Beads provides a rapid, scalable and reproducible means to deplete immunoglobulins from serum and plasma samples, allowing detection and analysis of low abundant proteins.

1. Based on the information in Table 1, select either PureProteome Protein A or Protein G Magnetic Beads.
2. Gently mix the bead suspension so that all of the beads are uniformly resuspended.
3. Pipette 100 µL of the suspended beads into a 1.5 mL microcentrifuge tube.

Table 1. Relative Affinity of Protein A and Protein G (see references on page 4)

Key code for relative affinity of Protein A and G for respective antibodies:								
++ = Strong affinity		+ = Moderate/slight affinity		+/- = Requires evaluation		- = No affinity		
	Protein A	Protein G		Protein A	Protein G		Protein A	Protein G
Human IgG ₁	++	++	Mouse IgM	+/-	-	Sheep IgG	+/-	+
Human IgG ₂	++	++	Rat IgG	++	++	Goat IgG	+/-	+
Human IgG ₃	-	++	Rat IgG ₁	+/-	+	Pig IgG	++	++
Human IgG ₄	++	++	Rat IgG _{2a}	+/-	++	Chicken IgG	-	+/-
Human IgA	+	-	Rat IgG _{2b}	+/-	+	<i>Fragments</i>		
Human IgD	+	-	Rat IgG _{2c}	+/-	+	Human Fab	+	+
Human IgE	+	-	Rat IgM	+/-	-	Human F(ab') ₂	+	+
Human IgM	+	-	Rabbit IgG	++	++	Human scFv	+	-
Mouse IgG ₁	+	+	Hamster IgG	+	++	Human Fc	+	+
Mouse IgG _{2a}	++	++	Guinea Pig IgG	++	+	Human κ	-	-
Mouse IgG _{2b}	++	++	Bovine IgG	+	+	Human λ	-	-
Mouse IgG ₃	+	++						

Immunoglobulin Depletion, continued

- Place the tube into the Magna GriP Rack, allow the beads to adhere to the side of the tube, and then remove the storage buffer with a pipette.
- Wash the beads by adding 500 μ L of PBS and vortexing vigorously for 10 seconds. Return the tube to the magnetic rack and allow the beads to adhere to the side. Remove the buffer with a pipette.
- Dilute 10–25 μ L of serum to a final volume of 100–200 μ L with PBS.
- Add the diluted serum sample to the beads. Incubate for 30 minutes at room temperature with continuous mixing.
- Place the tube back into the magnetic rack. Allow the beads to adhere to the side of the tube. Remove the supernatant with a pipette and save. This represents the depleted serum sample.

To elute the bound Ig from the beads continue with the steps below.

- Wash the beads 3 times using 500 μ L of PBS for each wash.
- Remove the tube from the magnetic rack, add 50 μ L of 0.2 M Glycine (pH 2.5). Vortex to mix.
- Allow the sample to incubate at room temperature for 2 minutes.
- Place the tube back into the magnetic rack. Allow the beads to adhere to the side of the tube. Remove the supernatant with a pipette and save.
- Repeat elution if desired.
- To neutralize the pH, add 5 μ L of 1 M Tris (pH 8.5).

Immunoprecipitation

PureProteome Protein A and Protein G Magnetic Beads are ideally suited for immunoprecipitation (IP) reactions. There are two main methods commonly used for immunoprecipitation: direct and indirect. In direct IP, the capture antibody is first immobilized onto the PureProteome Protein A or Protein G Magnetic Bead, generating an immunoaffinity magnetic bead. These antibody-coupled beads are then added to the sample (e.g., cell lysate) so that the bead-bound antibody can capture the antigen or protein complex of interest. In contrast, for indirect IP, the capture antibody is first incubated with the sample to allow formation of the antibody-antigen complex in solution. The PureProteome Protein A or Protein G Magnetic Beads are then incubated with the pre-formed antibody-antigen complex for capture onto the beads.

While both approaches are suitable for use with PureProteome Protein A or Protein G Magnetic Beads, the choice of approach is typically one of preference. There may be instances where one approach results in superior IP performance or offers greater convenience. For example, the direct IP approach could be used for the bulk preparation of immunoaffinity magnetic beads for future use, whereas the indirect method may be preferred where there are concerns about steric hindrance during the antigen-antibody binding step. Optimization of the specific immunoprecipitation reaction is recommended prior to finalizing the method. Because of the large variability in antibody affinity/avidity, no single protocol can provide optimal IP results in all cases. Parameters that may need to be optimized by the user include the amount of capture antibody used, sample

Immunoprecipitation, continued

concentration and preparation method, as well as incubation time and temperature. The following protocol is intended as a starting point for developing an optimized protocol.

Direct Immunoprecipitation Protocol

- Based on the information in Table 1, select either PureProteome Protein A or Protein G Magnetic Beads.
- Gently mix the bead suspension so that all of the beads are uniformly resuspended.
- Pipette 50 μ L of suspended beads into a 1.5 mL microcentrifuge tube.
- Place the tube into the Magna GriP Rack, allow the beads to adhere to the side of the tube, and then remove the storage buffer with a pipette.
- Wash the beads by adding 500 μ L of PBS containing 0.1% Tween[®] 20 surfactant and vortexing vigorously for 10 seconds. Return the tube to the magnetic rack and allow the beads to adhere to the side. Remove the buffer with a pipette.
- Resuspend the washed beads in 100 μ L of PBS containing 0.1% Tween 20 surfactant.
- Add the capture antibody to the resuspended beads.
- Incubate at room temperature for 10 minutes with continuous mixing.
- Place the tube into the magnetic rack, allow the beads to adhere to the side, and then remove the buffer with a pipette.
- Wash the beads 3 times with 500 μ L of PBS containing 0.1% Tween 20 surfactant.
- After the last wash, remove the tube from the rack and add the sample.
- Incubate the sample and immobilized capture antibody at 2–8 °C with continuous mixing. Refer to the antibody manufacturer's recommendations for the capture antibody concentration and incubation time. Times may vary from a few hours to overnight.
- Place the tube into the magnetic rack, allow the beads to adhere to the side and then remove the sample with a pipette.
- Wash the beads 3 times with 500 μ L of PBS containing 0.1% Tween 20 surfactant.
- After the last wash, remove the tube from the magnetic rack and add the appropriate elution buffer for denaturing or native elution.

Denaturing Elution: Add 60 μ L of sample buffer suitable for electrophoresis and mix to resuspend the beads. Heat at 70–90 °C for 10 minutes. Place the tube into the magnetic rack, allow the beads to adhere to the side and immediately transfer the supernatant to a new tube with a pipette.

Native Elution: Add 60 μ L of 0.2 M Glycine (pH 2.5), mix to resuspend the beads, then incubate for 1–2 minutes at room temperature. Place the tube into the magnetic rack and allow the beads to adhere to the side. Transfer the supernatant to a new tube with a pipette and neutralize by adding 5 μ L of 1 M Tris (pH 8.5).

NOTE: Smaller elution volumes (minimum 20 μ L) can be used, however, yields will be slightly lower. To achieve maximum yield with a smaller elution volume, a second elution is recommended.

Indirect Immunoprecipitation Protocol

1. Incubate the sample and capture antibody at 2–8 °C with continuous mixing. Refer to the antibody manufacturer's recommendations for the capture antibody concentration and incubation time. Times may vary from a few hours to overnight.
2. Based on the information in Table 1, select either PureProteome Protein A or Protein G Magnetic Beads.
3. Gently mix the bead suspension so that all of the beads are uniformly resuspended.
4. Pipette 50 µL of suspended beads into a clean 1.5 mL microcentrifuge tube.
5. Place the tube into the Magna GriP Rack, allow the beads to adhere to the side of the tube, and then remove the storage buffer with a pipette.
6. Wash the beads by adding 500 µL of PBS containing 0.1% Tween 20 surfactant and vortexing vigorously for 10 seconds. Return the magnetic beads to the rack and allow them to adhere to the side. Remove the buffer with a pipette.
7. Add the reaction containing the pre-formed antibody-antigen complex (from step 1) to the beads.
8. Incubate for 10 minutes at room temperature with continuous mixing to capture the immune complex.
9. Follow steps 13 through 15 in the Direct Immunoprecipitation Protocol.

Disposal

Used material may be discharged into sewer or industrial waste water systems if allowed by local regulations. Otherwise, collect and dispose according to federal, state, and local regulations.

Specifications

Matrix	Polymer-coated inorganic beads with covalently coupled recombinant Protein A or Protein G
Particle form	Spherical
Bead diameter	10 µm (nominal)
Storage	2–8 °C. Do not freeze.
Capacity*	
Protein A	Typically 1.5–2.5 µg of rabbit IgG per µL of suspension
Protein G	Typically 2.5–3.5 µg of rabbit IgG per µL of suspension

PureProteome Protein A and Protein G Magnetic Beads are for research use only.

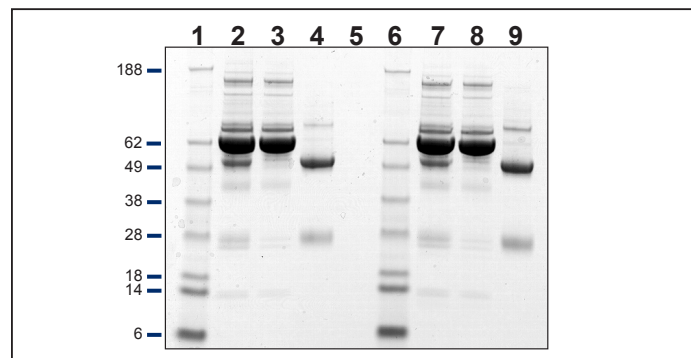
* Performance will vary depending on the antibody isotype and/or species of the organism used to generate the antibody. Refer to Table 1.

Product Ordering Information

Description	Qty/Pk	Cat. No.
PureProteome Protein A Magnetic Beads	2 x 1 mL 1 x 10 mL	LSKM AGA 02 LSKM AGA 10
PureProteome Protein G Magnetic Beads	2 x 1 mL 1 x 10 mL	LSKM AGG 02 LSKM AGG 10
Magna GriP Rack	1	20-400

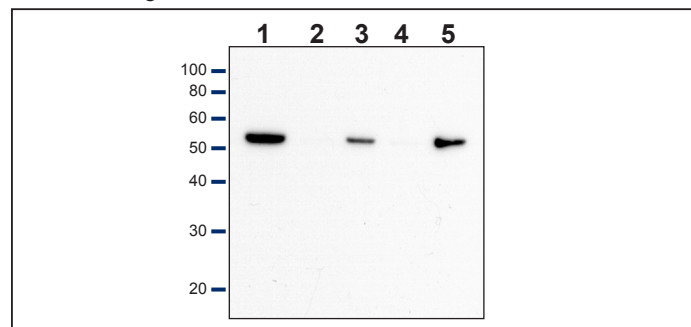
Performance

Figure 1. Immunodepletion of Immunoglobulins From Rabbit Serum using PureProteome Protein A and Protein G Magnetic Beads



Rabbit serum (10 µL) was diluted with 190 µL of PBS and the immunoglobulins were depleted using either PureProteome Protein A (lanes 2–4) or Protein G (lanes 7–9) Magnetic Beads. Samples of the input material, flow through, and bound fractions were separated by SDS-PAGE and stained with colloidal Coomassie blue. Lanes 1 and 6 show molecular weight markers, 2 and 7 show the input material, 3 and 8 show the flow through Ig depleted serum, and 4 and 9 show the bound Ig fraction. ELISA assay results revealed 98% Ig depletion for both Protein A and Protein G.

Figure 2. Immunoprecipitation of p53 from A431 Cell Lysates Using PureProteome Protein A and Protein G Magnetic Beads



Whole-cell lysates (500 µg of protein) prepared from human epidermoid carcinoma (A431) cells were incubated with 5 µg of mouse monoclonal anti-p53 antibody. PureProteome Protein A (lanes 2 and 3) or Protein G Magnetic Beads (lanes 4 and 5) were then added to the reaction to capture the immune complexes following the indirect immunoprecipitation protocol. Samples of input material (lane 1), flow through (lanes 2 and 4) and bound fractions (lanes 3 and 5) were separated by SDS-PAGE prior to semi-dry transfer to Immobilon®-P blotting membrane. Immunodetection was performed with the SNAP i.d.™ Protein Detection System using a rabbit polyclonal anti-p53 antibody (diluted 1:1,000) and a horseradish peroxidase conjugated goat anti-rabbit secondary antibody (diluted 1:40,000). The blot shown was visualized using Immobilon® Western HRP Substrate and represents a 1-minute exposure to x-ray film.

Troubleshooting/Optimization

Problem: Low Immunoglobulin binding	
Cause	Solution
Insufficient bead volume	Ensure that the beads are well suspended prior to pipetting. Mix the beads while pipetting.
Insufficient mixing	Mix beads and sample continuously with either a vortex mixer or end-over-end mixing.
Incorrect bead	Refer to Table 1 to match the host and isotype of Ig with either PureProteome Protein A or Protein G Magnetic Beads.
Insufficient incubation	Optimization may be required. A 10-minute incubation is recommended as a starting point, but this is dependent on the sample volume and affinity of antibody for target antigen.
Problem: High background	
Cause	Solution
Insufficient washing	Wash the beads at least 3 times with PBS containing 0.1% Tween 20 surfactant prior to eluting the sample. Ensure complete removal of buffer.
Problem: Magnetic beads do not collect on the magnet	
Cause	Solution
Magnet strength not sufficient	Use the Magna GriP Rack for optimal performance. Make sure the tube is in contact with the magnet.
Problem: Poor recovery	
Cause	Solution
Incorrect elution volume	Elute the sample in volumes between 20 and 60 μ L. If the target is a low abundant protein, smaller elution volumes are recommended. Perform a second elution.

References

1. Richman, D. D., Cleveland, P. H., Oxman, M. N. and Johnson, K. M. 1982. "The binding of *Staphylococci* protein A by the sera of different animal species." *J. Immunol.* 128: 2300-2305.
2. Akerstrom, B., Brodin, T., Reis, K. and Bjork, L. 1985. "Protein G: A powerful tool for binding and detection of monoclonal and polyclonal antibodies." *J. Immunol.* 135: 2589-2592.
3. Gagnon, P. 1996. "Protein A Affinity Chromatography." In: *Gagnon, P., ed. Purification Tools for Monoclonal Antibodies.* 155-198. Validated Biosystems Inc., Tucson.
4. Swartz, L. 1990. In: *Boyle, M., ed. Bacterial Immunoglobulin-Binding Proteins.* Vol II:309. Academic Press, San Diego.
5. Frank, M. B. 1997. "Antibody Binding to Protein A and Protein G beads". In: *Frank, M. B., ed. Molecular Biology Protocols.* Oklahoma City.

LSKMAGXX, Rev. A, 10/08

© 2008. Millipore Corporation. All rights reserved.

Millipore and Immobilon are registered trademarks of Millipore Corporation.

PureProteome, Magna GriP, SNAP i.d., and the M mark are trademarks of Millipore Corporation.

Tween is a registered trademark of ICI Americas Inc.

Notice

The information in this document is subject to change without notice and should not be construed as a commitment by Millipore Corporation or an affiliated corporation. Neither Millipore Corporation nor any of its affiliated corporations assumes responsibility for any errors that may appear in this document. This manual is believed to be complete and accurate at the time of publication. In no event shall Millipore Corporation be liable for incidental or consequential damages in connection with or arising from the use of this manual.

Technical Assistance

For more information, contact the Millipore office nearest you. In the U.S., call **1-800-MILLIPORE** (1-800-645-5476). Outside the U.S., see your Millipore catalogue for the phone number of the office nearest you or go to our web site at www.millipore.com/offices for up-to-date worldwide contact information. You can also visit the tech service page on our web site at www.millipore.com/techservice.

Standard Warranty

Millipore Corporation ("Millipore") warrants its products will meet their applicable published specifications when used in accordance with their applicable instructions for a period of one year from shipment of the products. **MILLIPORE MAKES NO OTHER WARRANTY, EXPRESSED OR IMPLIED. THERE IS NO WARRANTY OF MERCHANTABILITY OR FITNESS FOR A PARTICULAR PURPOSE.** The warranty provided herein and the data, specifications and descriptions of Millipore products appearing in Millipore's published catalogues and product literature may not be altered except by express written agreement signed by an officer of Millipore. Representations, oral or written, which are inconsistent with this warranty or such publications are not authorized and if given, should not be relied upon.

In the event of a breach of the foregoing warranty, Millipore's sole obligation shall be to repair or replace, at its option, the applicable product or part thereof, provided the customer notifies Millipore promptly of any such breach. If after exercising reasonable efforts, Millipore is unable to repair or replace the product or part, then Millipore shall refund to the customer all monies paid for such applicable product or part. **MILLIPORE SHALL NOT BE LIABLE FOR CONSEQUENTIAL, INCIDENTAL, SPECIAL OR ANY OTHER INDIRECT DAMAGES RESULTING FROM ECONOMIC LOSS OR PROPERTY DAMAGE SUSTAINED BY ANY CUSTOMER FROM THE USE OF ITS PRODUCTS.**

